

RANGE 7 EAST

CARBON COUNTY PLATS

TOWNSHIP 12 SOUTH

SW4 NW4 SW4
SECTION 3

MADSEN BAY
SUBDIVISION

LAMBSON SUBDIVISION

BOR HIGH WATER
ELEV 7638.9'

SEC 4-12-7

SEC 3-12-7

2A-12-9
ROBERT M.
& NANCY E.
THOMPSON, TR.
.12 Ac.

2A-12-31
ROBERT M.
& NANCY E.
THOMPSON,
TR.
.06 Ac.

2A-12-33
ROBERT M.
& NANCY E.
THOMPSON, TR.
.09 Ac.

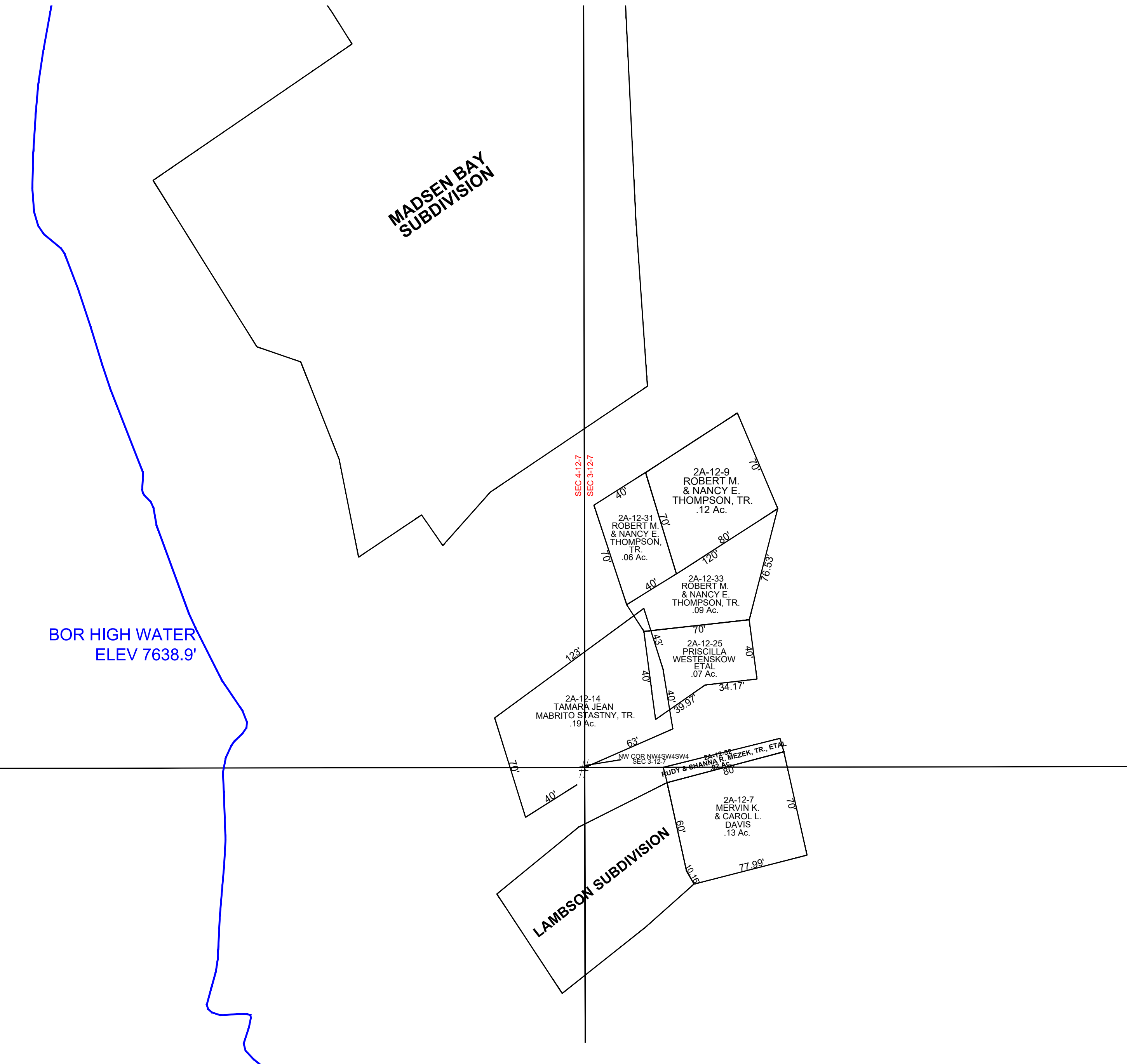
2A-12-25
PRISCILLA
WESTENSKOW
ETAL
.07 Ac.

2A-12-14
TAMARA JEAN
MABRITO STASTNY, TR.
.19 Ac.

NW COR NW4SW4SW4
SEC 3-12-7

2A-12-32
JUDY & SHANNA R. MEZEK, TR., ETAL
.02 Ac.

2A-12-7
MERVIN K.
& CAROL L.
DAVIS
.13 Ac.



SCALE: 50 FEET = 1 INCH
SEPTEMBER 28, 2022

Carbon County assumes no liability for errors or omissions in any information.