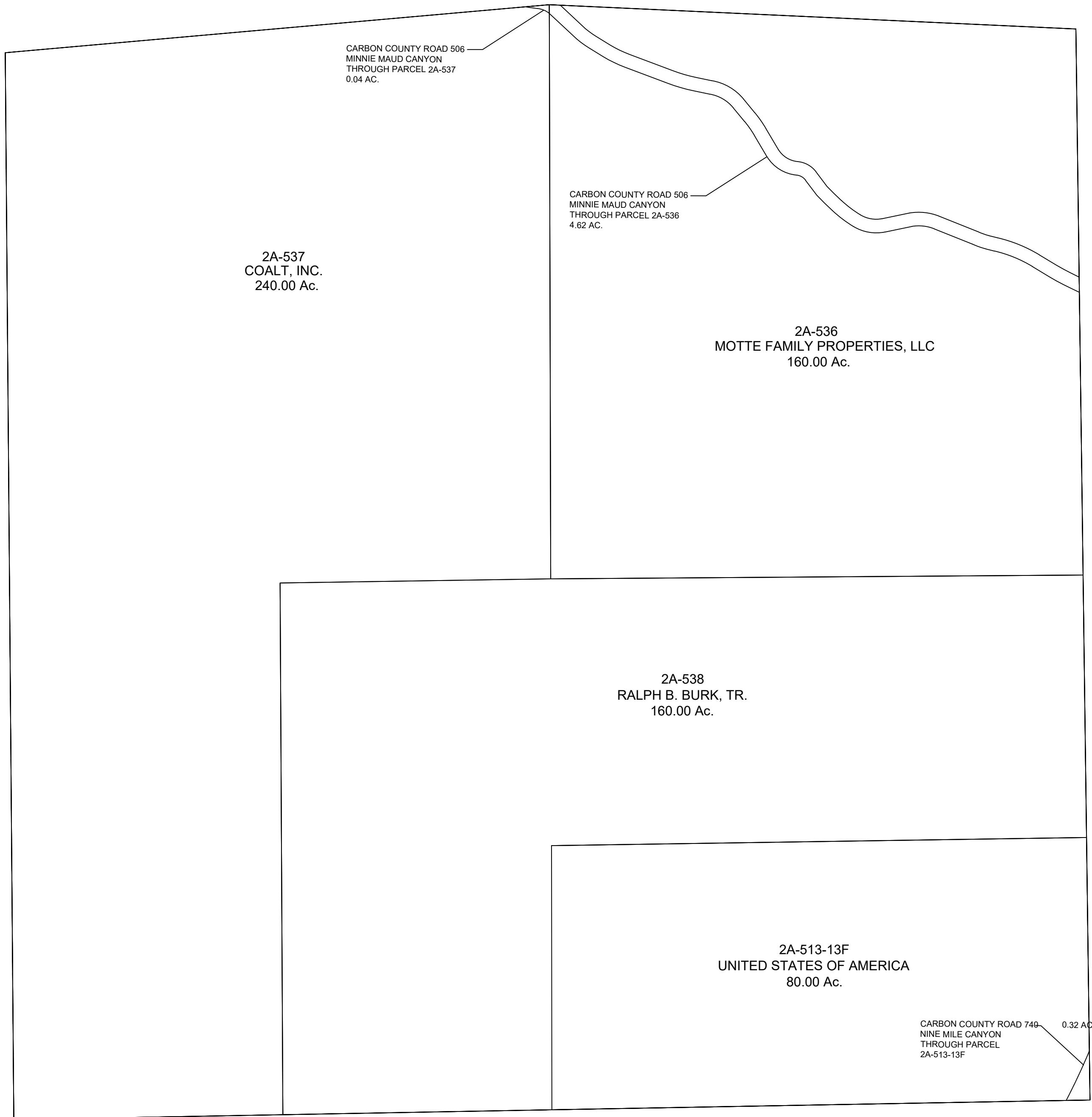


RANGE 12 EAST

TOWNSHIP 12 SOUTH

CARBON COUNTY PLATS

SECTION 13



CARBON COUNTY ROAD 506
MINNIE MAUD CANYON
THROUGH PARCEL 2A-537
0.04 AC.

CARBON COUNTY ROAD 506
MINNIE MAUD CANYON
THROUGH PARCEL 2A-536
4.62 AC.

2A-537
COALT, INC.
240.00 Ac.

2A-536
MOTTE FAMILY PROPERTIES, LLC
160.00 Ac.

2A-538
RALPH B. BURK, TR.
160.00 Ac.

2A-513-13F
UNITED STATES OF AMERICA
80.00 Ac.

CARBON COUNTY ROAD 740
NINE MILE CANYON
THROUGH PARCEL
2A-513-13F
0.32 AC.

SCALE: 400 FEET = 1 INCH
JUNE 5, 2019

Carbon County assumes no liability for errors or omissions in any information.