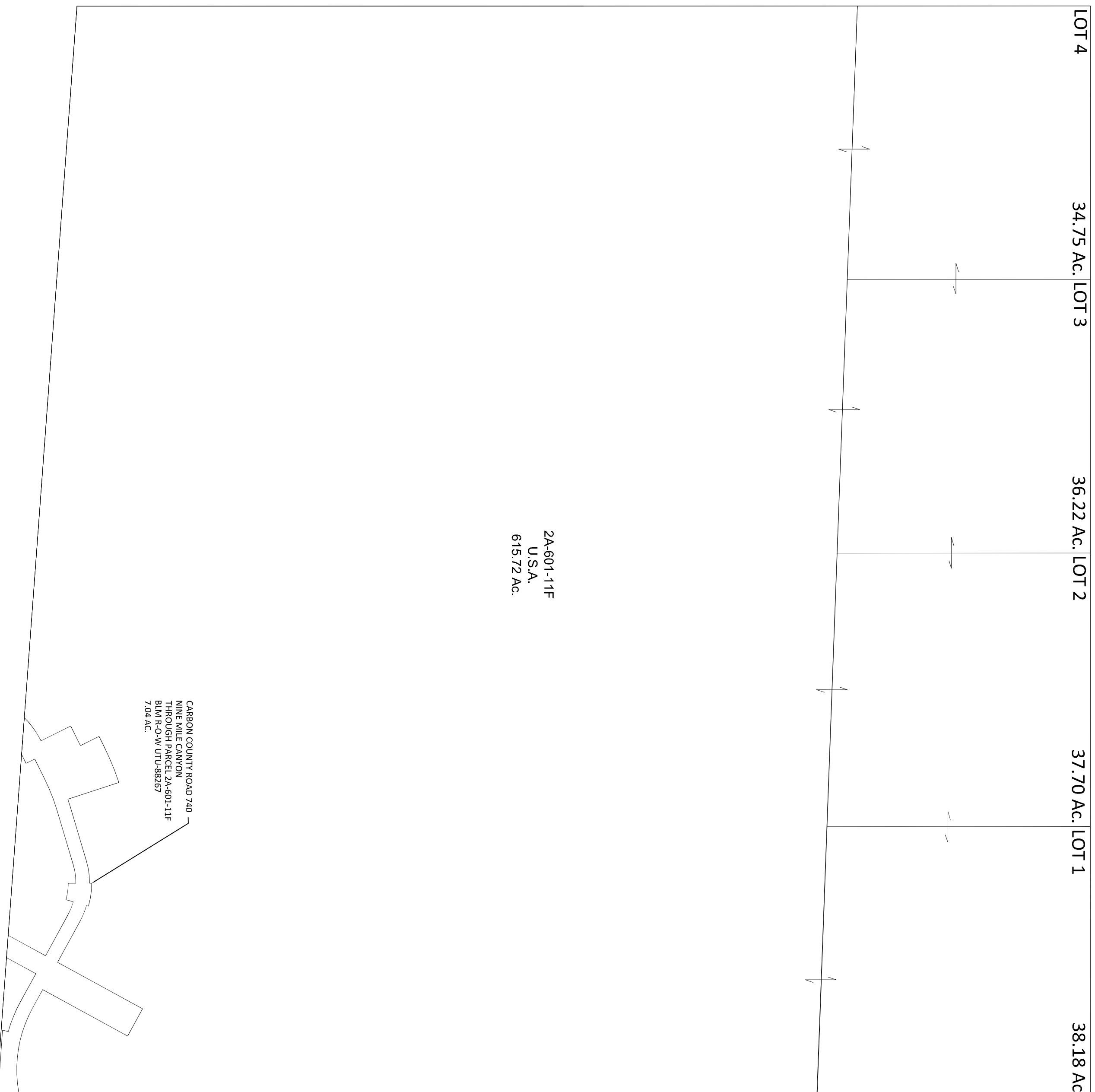


CARBON COUNTY PLATS

SECTION 11

TOWNSHIP 12 SOUTH

RANGE 13 EAST



Carbon County assumes no liability for errors or omissions in any information. The section lines for this section were obtained from the BLM. No section corners have been surveyed by Carbon County to produce this plat, it should be used accordingly. Property owners should obtain a certified survey of their property.

