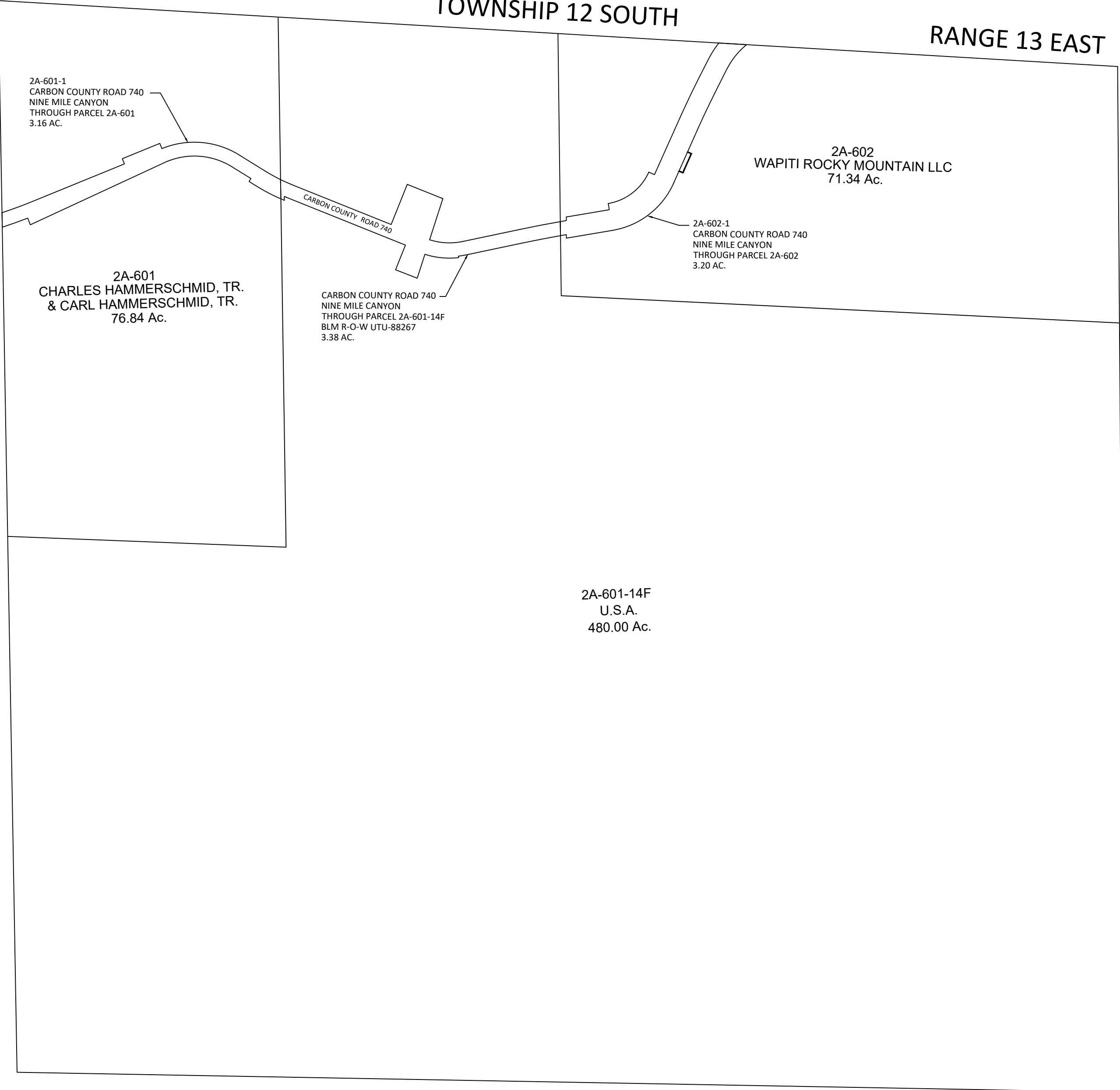


CARBON COUNTY PLATS

SECTION 14

TOWNSHIP 12 SOUTH

RANGE 13 EAST



2A-601-1
CARBON COUNTY ROAD 740
NINE MILE CANYON
THROUGH PARCEL 2A-601
3.16 AC.

2A-601
CHARLES HAMMERSCHMID, TR.
& CARL HAMMERSCHMID, TR.
76.84 Ac.

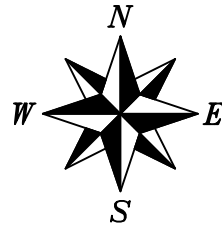
CARBON COUNTY ROAD 740

CARBON COUNTY ROAD 740
NINE MILE CANYON
THROUGH PARCEL 2A-601-14F
BLM R-O-W UTU-88267
3.38 AC.

2A-601-14F
U.S.A.
480.00 Ac.

2A-602-1
CARBON COUNTY ROAD 740
NINE MILE CANYON
THROUGH PARCEL 2A-602
3.20 AC.

2A-602
WAPITI ROCKY MOUNTAIN LLC
71.34 Ac.



Carbon County assumes no liability for errors or omissions in any information. The section lines for this section were obtained from the BLM. No section corners have been surveyed by Carbon County to produce this plat, it should be used accordingly. Property owners should obtain a certified survey of their property.

LEGEND

- PERMANENT DRAINAGE EASEMENT TO CARBON COUNTY
- PROPERTY LINES & ROAD RIGHT-OF-WAY LINES

SCALE: 400 FEET = 1 INCH