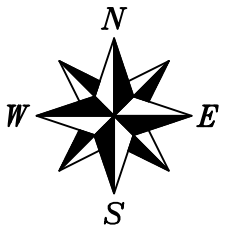
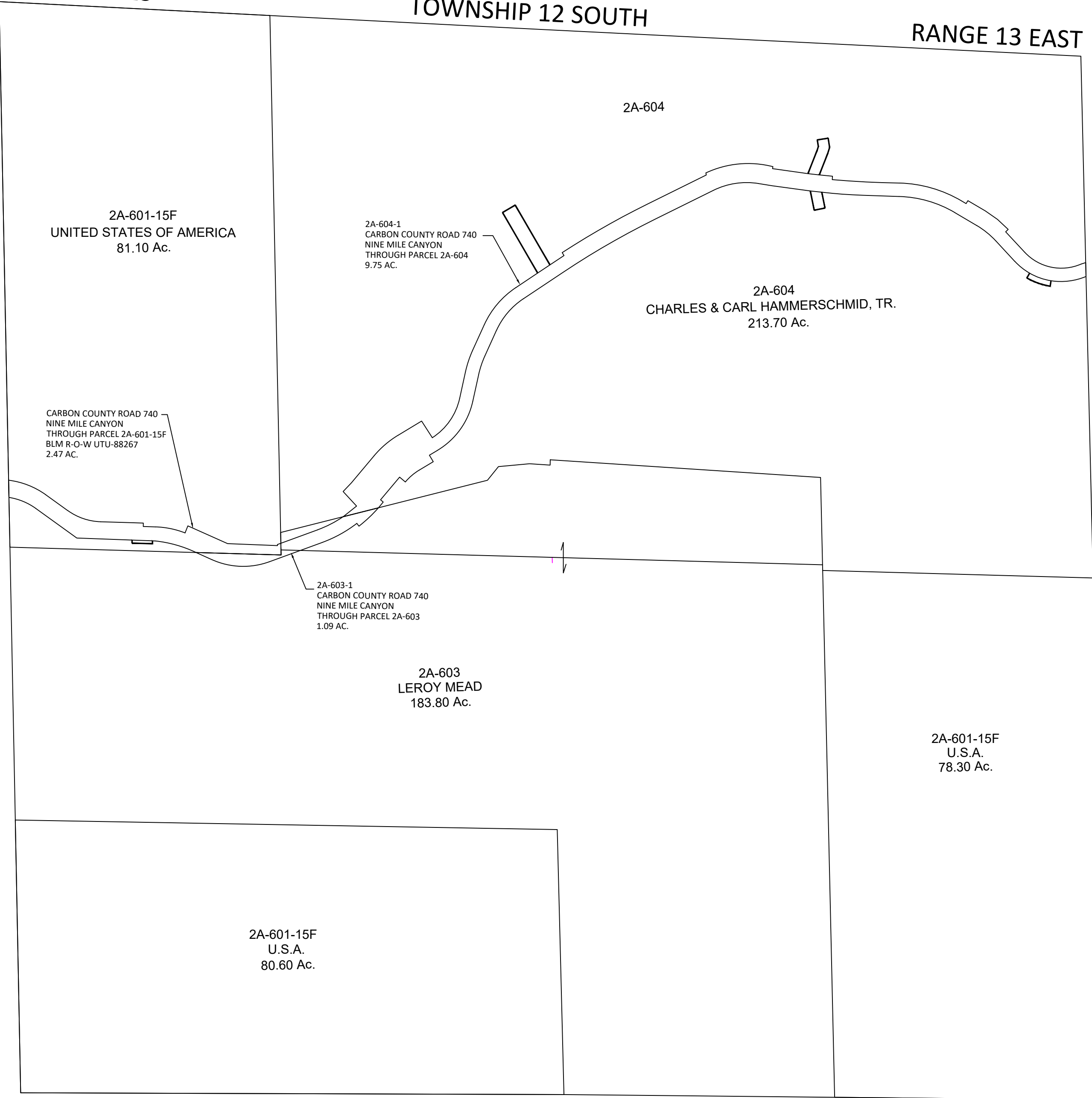


CARBON COUNTY PLATS

SECTION 15

TOWNSHIP 12 SOUTH

RANGE 13 EAST



G:\egps\eclog2.tif

Carbon County assumes no liability for errors or omissions in any information. The section lines for this section were obtained from the BLM. No section corners have been surveyed by Carbon County to produce this plat, it should be used accordingly. Property owners should obtain a certified survey of their property.

LEGEND

- PERMANENT DRAINAGE EASEMENT TO CARBON COUNTY
- PROPERTY LINES & ROAD RIGHT-OF-WAY LINES

SCALE: 400 FEET = 1 INCH