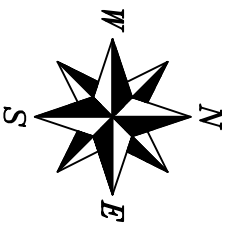
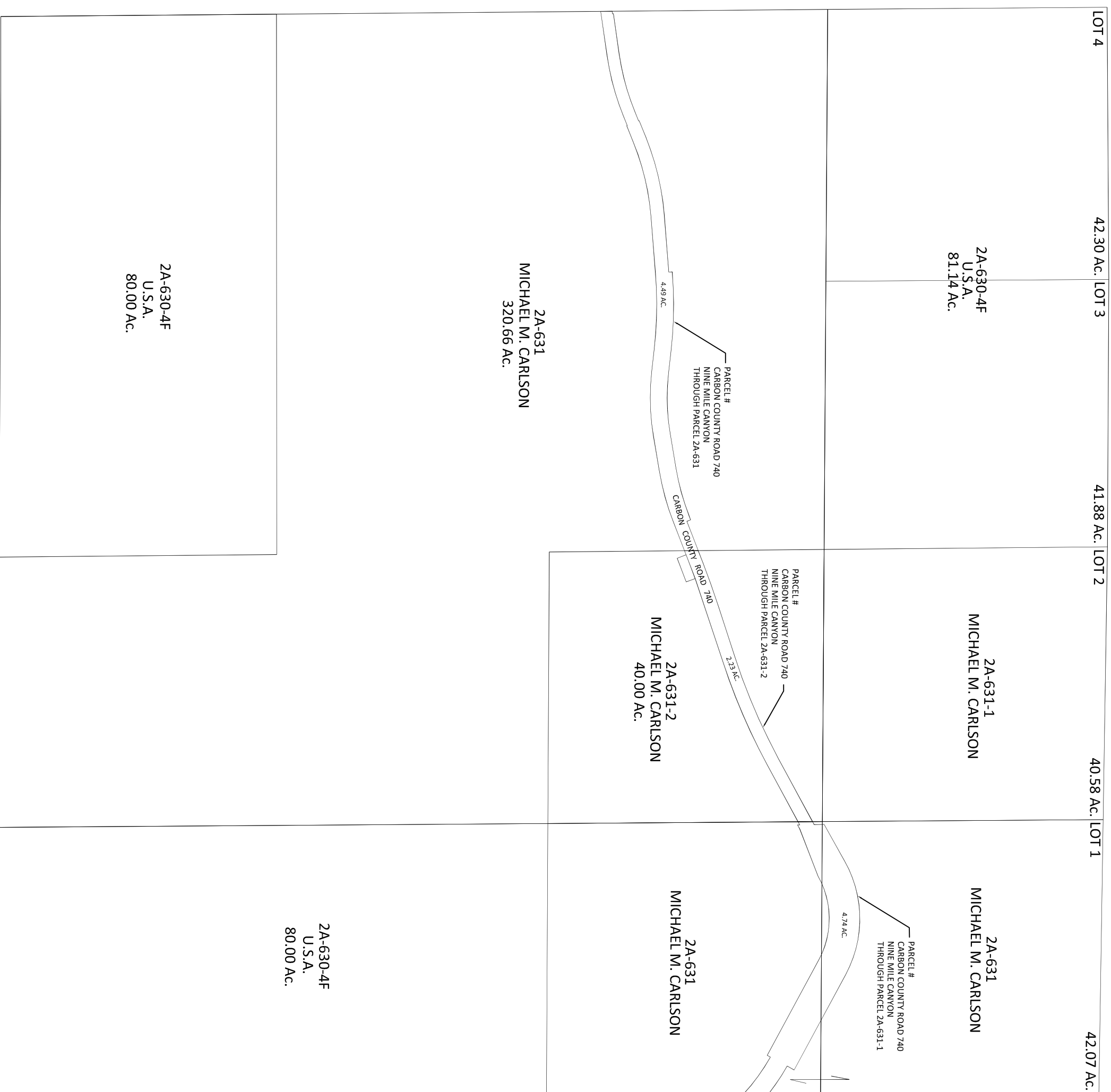


# CARBON COUNTY PLATS

SECTION 4

TOWNSHIP 12 SOUTH

RANGE 14 EAST



- LEGEND
- PERMANENT DRAINAGE EASEMENT TO CARBON COUNTY
  - PROPERTY LINES & ROAD RIGHT-OF-WAY LINES

Carbon County assumes no liability for errors or omissions in any information. The section lines for this section were obtained from the plat recorded by Carbon County to produce this plat. It should be used accordingly. Property owners should obtain a certified survey of their property.

SCALE: 500 FEET = 1 INCH