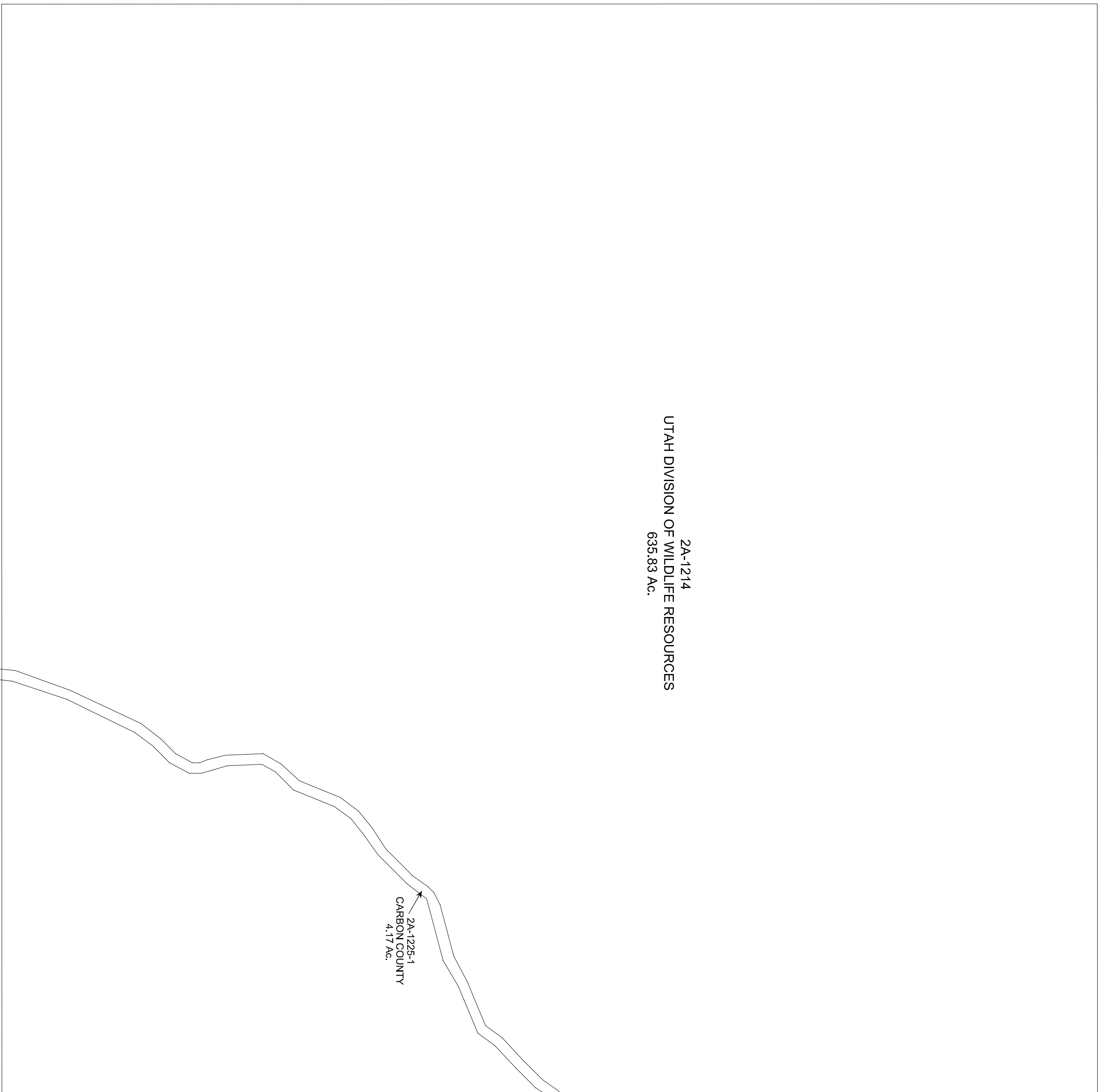


CARBON COUNTY PLATS

SECTION 25

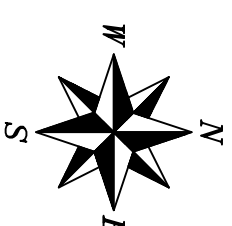
TOWNSHIP 13 SOUTH

RANGE 14 EAST



2A-1214
UTAH DIVISION OF WILDLIFE RESOURCES
635.83 Ac.

2A-1225-1
CARBON COUNTY
4.17 Ac.



Carbon County assumes no liability for errors or omissions in any information.

SCALE: 400 FEET = 1 INCH