

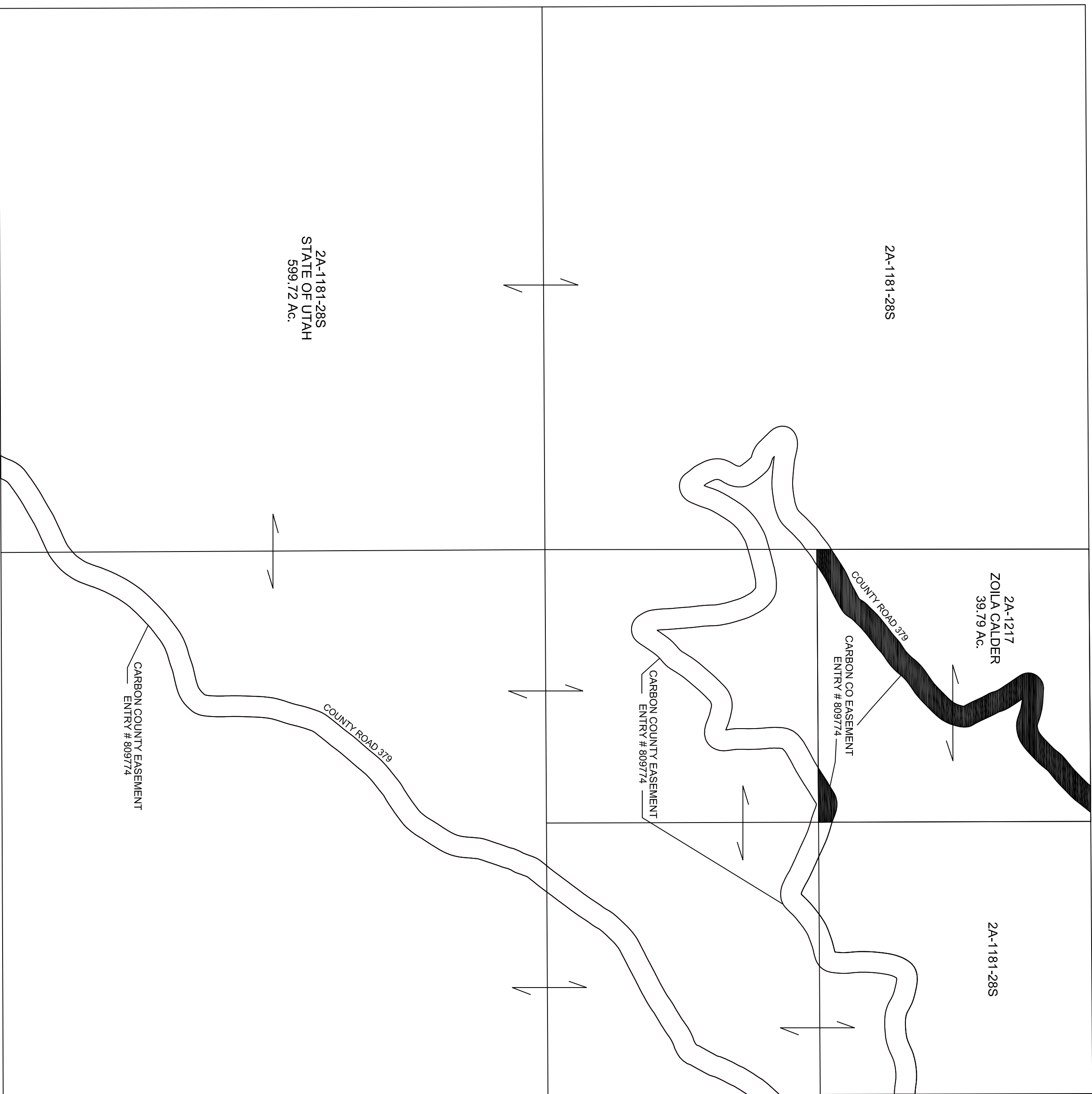
©2015 K&L

RANGE 14 EAST

TOWNSHIP 13 SOUTH

SECTION 28

# CARBON COUNTY PLATS



2A-1181-28S  
STATE OF UTAH  
599.72 Ac.

2A-1181-28S

2A-1217  
ZOILA CALDER  
39.79 Ac.

2A-1181-28S

COUNTY ROAD 379

CARBON CO EASEMENT  
ENTRY # 809774

CARBON COUNTY EASEMENT  
ENTRY # 809774

COUNTY ROAD 379

CARBON COUNTY EASEMENT  
ENTRY # 809774

SCALE: 400 FEET = 1 INCH  
JANUARY 23, 2015

Carbon County assumes no liability for errors or omissions in any information.