

CARBON COUNTY PLATS

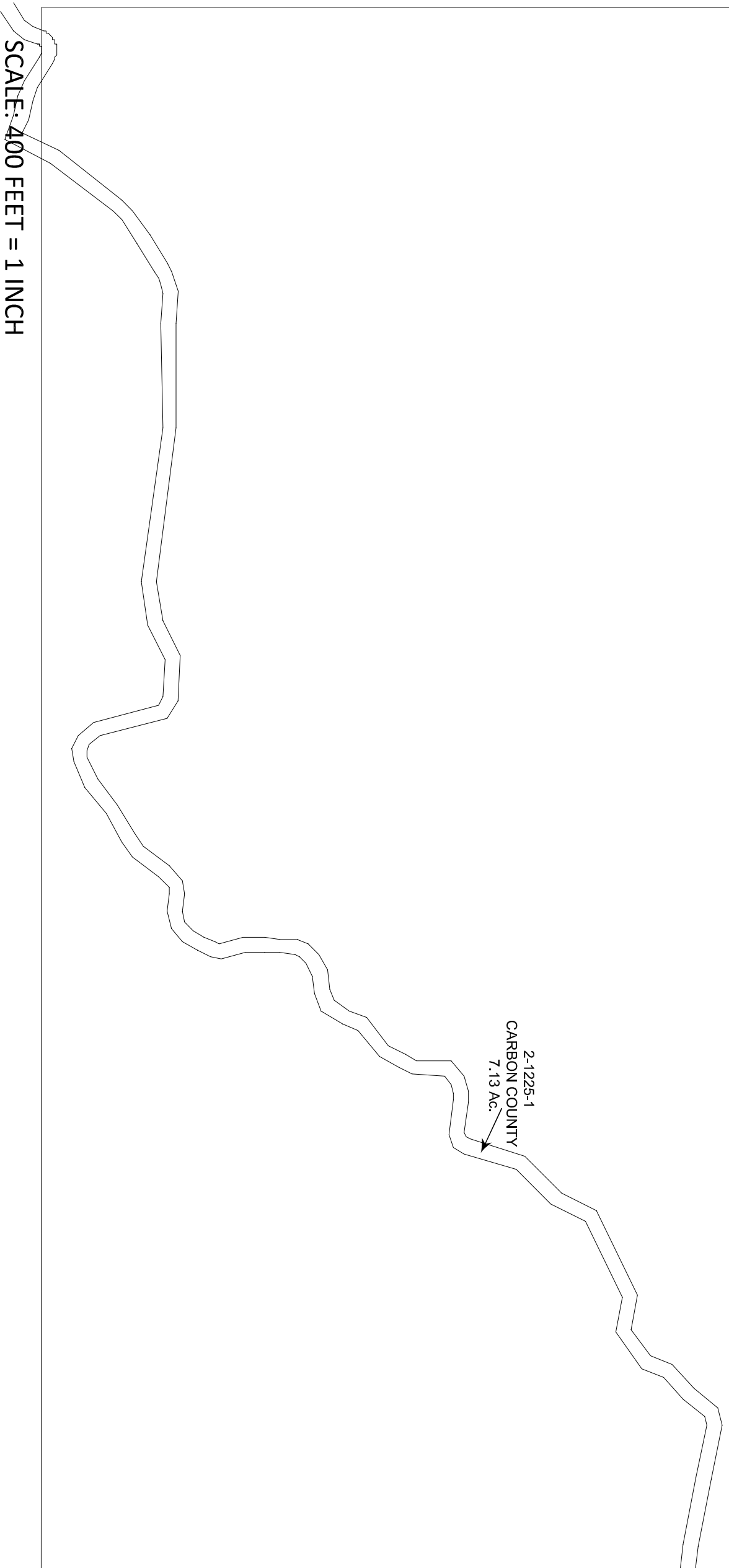
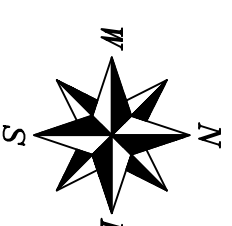
SECTION 35

TOWNSHIP 13 SOUTH

RANGE 14 EAST

2A-1225
UTAH DIVISION OF WILDLIFE RESOURCES
632.57 Ac.

2-1225-1
CARBON COUNTY
7.13 Ac.



Carbon County assumes no liability for errors or omissions in any information.