

CARBON COUNTY PLATS

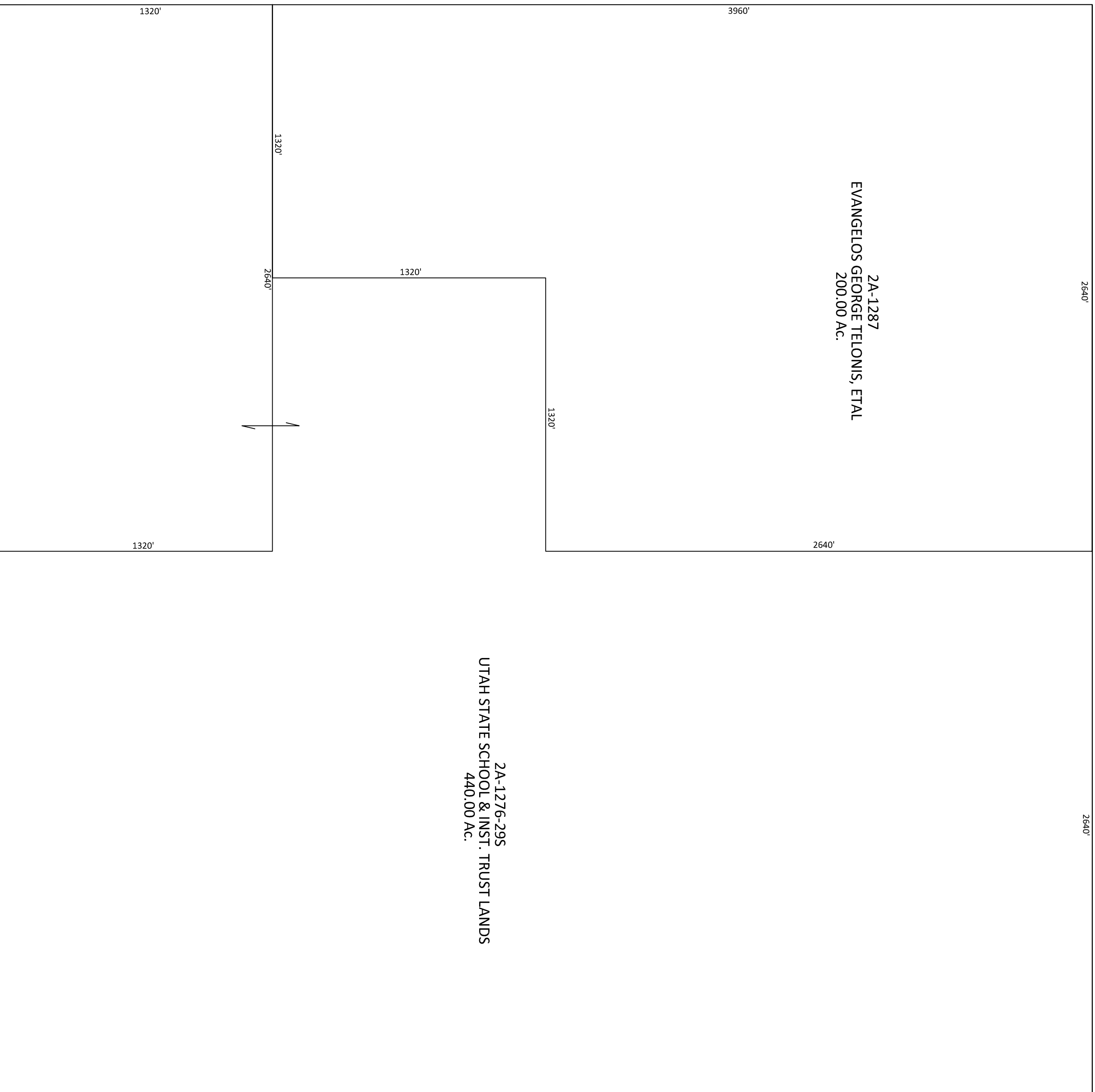
SECTION 29

TOWNSHIP 14 SOUTH

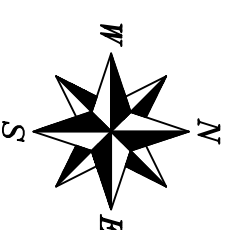
RANGE 9 EAST

2A-1287
EVANGELOS GEORGE TELONIS, ETAL
200.00 AC.

2A-1276-295
UTAH STATE SCHOOL & INST. TRUST LANDS
440.00 AC.



SCALE: 400 FEET = 1 INCH



Carbon County assumes no liability for errors or omissions in any information.