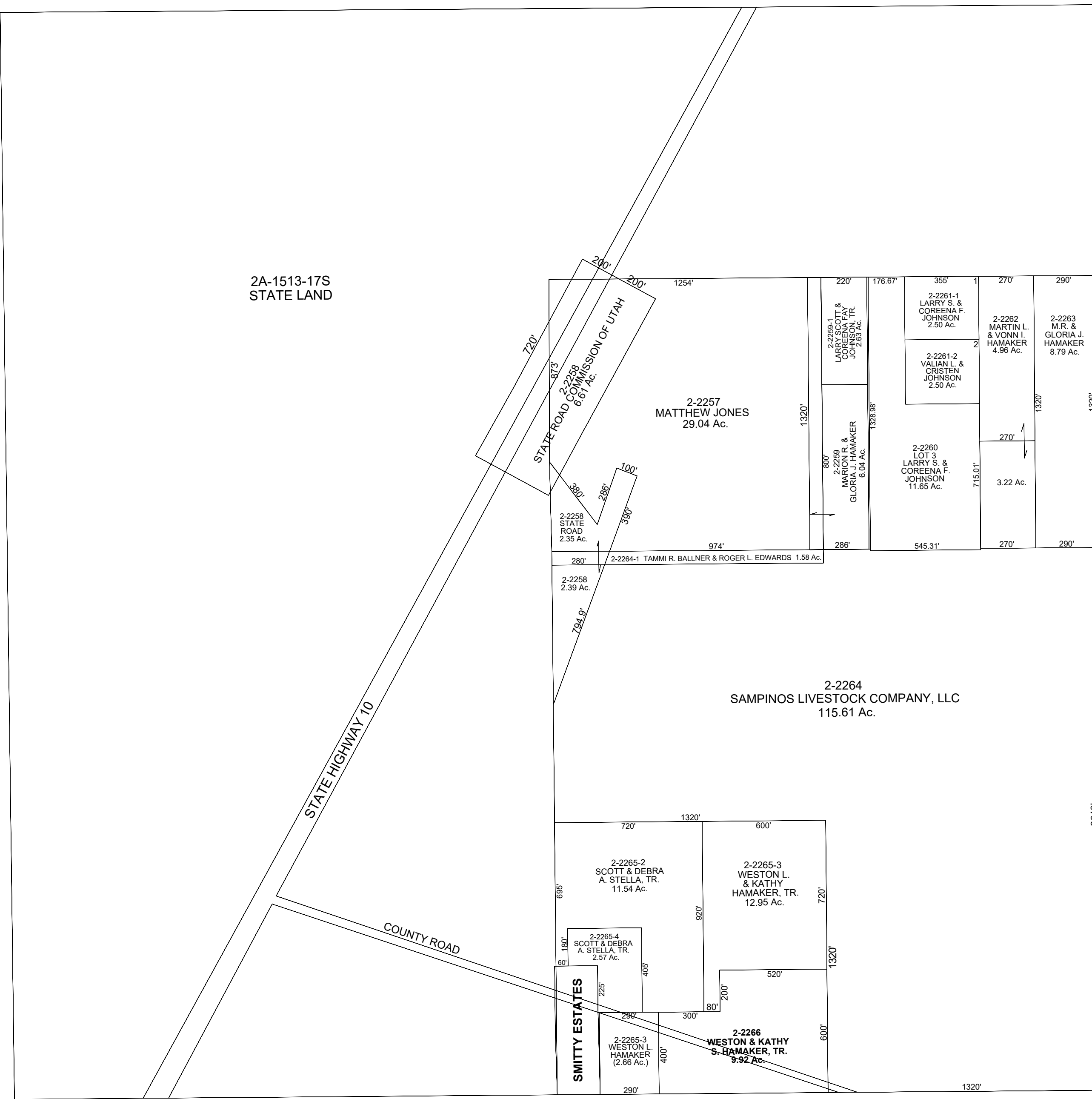


© HogeWiki.com 2021



2A-1513-17S
STATE LAND

STATE HIGHWAY 10

COUNTY ROAD

STATE ROAD 2-2258
COMMISSION OF UTAH

2-2257
MATTHEW JONES
29.04 Ac.

2-2258
STATE ROAD
2.35 Ac.

2-2258
2.39 Ac.

2-2264
SAMPINOS LIVESTOCK COMPANY, LLC
115.61 Ac.

2-2265-2
SCOTT & DEBRA
A. STELLA, TR.
11.54 Ac.

2-2265-4
SCOTT & DEBRA
A. STELLA, TR.
2.57 Ac.

2-2265-3
WESTON L.
HAMAKER
(2.66 Ac.)

2-2266
WESTON & KATHY
S. HAMAKER, TR.
9.92 Ac.

2-2269-1
LARRY SCOTT &
COREENA FAY
JOHNSON, TR.
2.63 Ac.

2-2259
MARION R. &
GLORIA J. HAMAKER
6.04 Ac.

2-2261-1
LARRY S. &
COREENA F.
JOHNSON
2.50 Ac.

2-2261-2
VALIAN L. &
CRISTEN
JOHNSON
2.50 Ac.

2-2260
LOT 3
LARRY S. &
COREENA F.
JOHNSON
11.65 Ac.

2-2262
MARTIN L.
& VONN I.
HAMAKER
4.96 Ac.

2-2263
M.R. &
GLORIA J.
HAMAKER
8.79 Ac.

SMITTY ESTATES

SCALE : 400 FEET = 1 INCH
JUNE 16, 2021

Carbon County assumes no liability for errors or omissions in any information.

CARBON COUNTY PLATS

TOWNSHIP 15 SOUTH RANGE 10 EAST SECTION 17