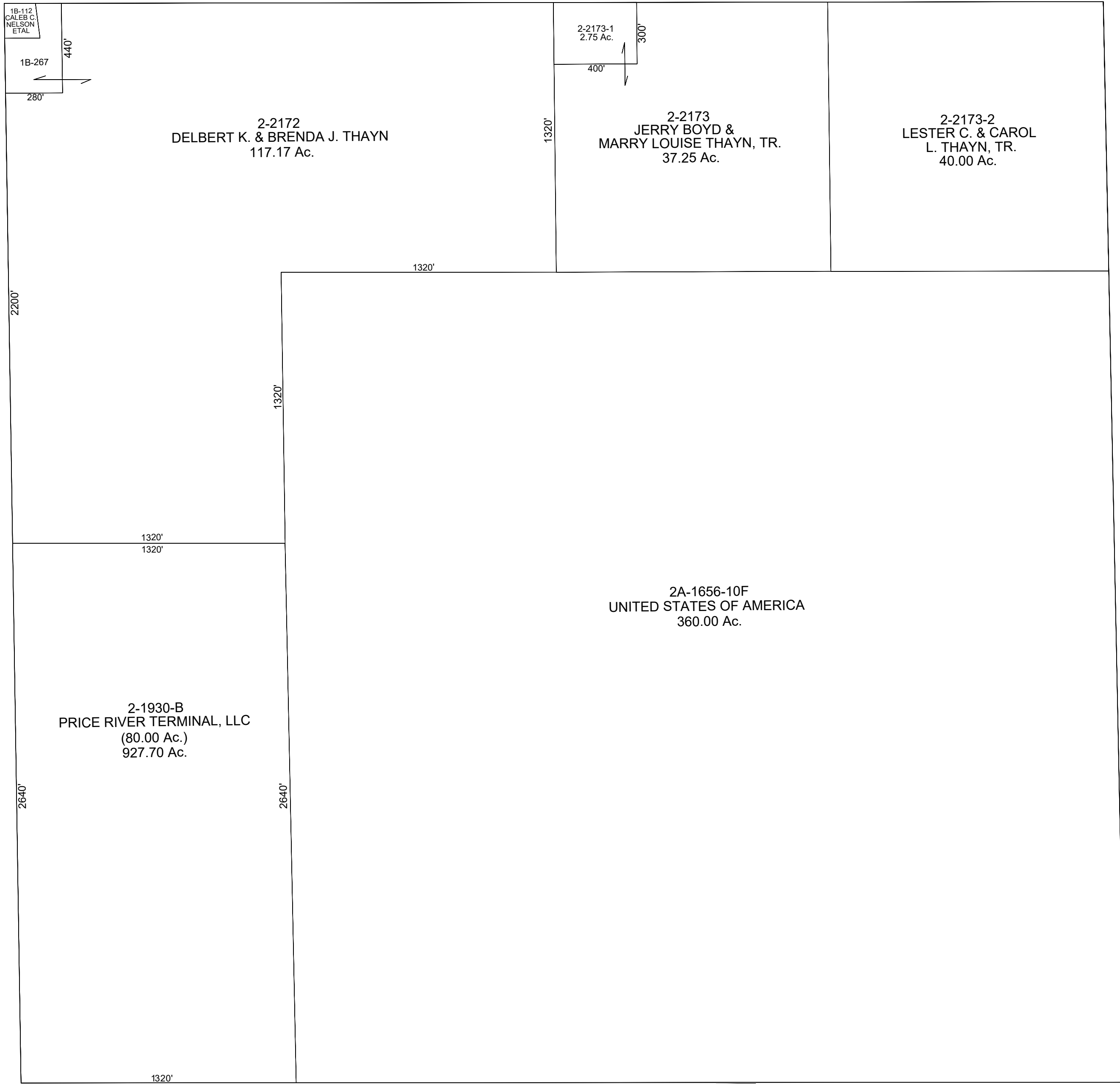


CARBON COUNTY PLATS

RANGE 11 EAST

TOWNSHIP 15 SOUTH

SECTION 10



1B-112
CALEB C.
NELSON
ETAL

1B-267

440'

280'

2-2173-1
2.75 Ac.

400'

300'

1320'

2-2173
JERRY BOYD &
MARRY LOUISE THAYN, TR.
37.25 Ac.

2-2173-2
LESTER C. & CAROL
L. THAYN, TR.
40.00 Ac.

1320'

2200'

1320'

1320'

1320'

2A-1656-10F
UNITED STATES OF AMERICA
360.00 Ac.

2-1930-B
PRICE RIVER TERMINAL, LLC
(80.00 Ac.)
927.70 Ac.

2640'

2640'

1320'

SCALE: 400 FEET = 1 INCH
OCTOBER 12, 2023

Carbon County assumes no liability for errors or omissions in any information.