

STATE OF UTAH
 COUNTY OF CARSON
 FILED AND RECORDED
 Helper City
 Oct 16 3 21 PM '65
 BOOK 3 Plat A
 PAGE 112
 ANNA O'BRIEN
 COUNTY REGISTER

110598

NEW HELPER SCHOOL ANNEX TO HELPER CITY
 1965

ENGINEER'S CERTIFICATE

I, John Bene, do hereby certify that I am a Professional Engineer and Land Surveyor as prescribed under the laws of the State of Utah; that I hold certificate #1050; that I have drawn the tract of land shown on this plat as a new annex to Helper City, a municipal corp. of the State of Utah, in the year 1965; and that the said tract of land is described as follows:

Ref. at pt. 560 ft. S. & 252 ft. W. of NE Cor. of GUNSW, Sec. 13, T.13 S., R.9 E., S.1M; to N. 940 ft.; S. 27°00' E. 425 ft.; S. 42°21' W. 567 ft. to NE Cor. of GUNSW of said Sec. 13; to E 1068 ft.; N. 760 ft. N/1 to pt. of beg.

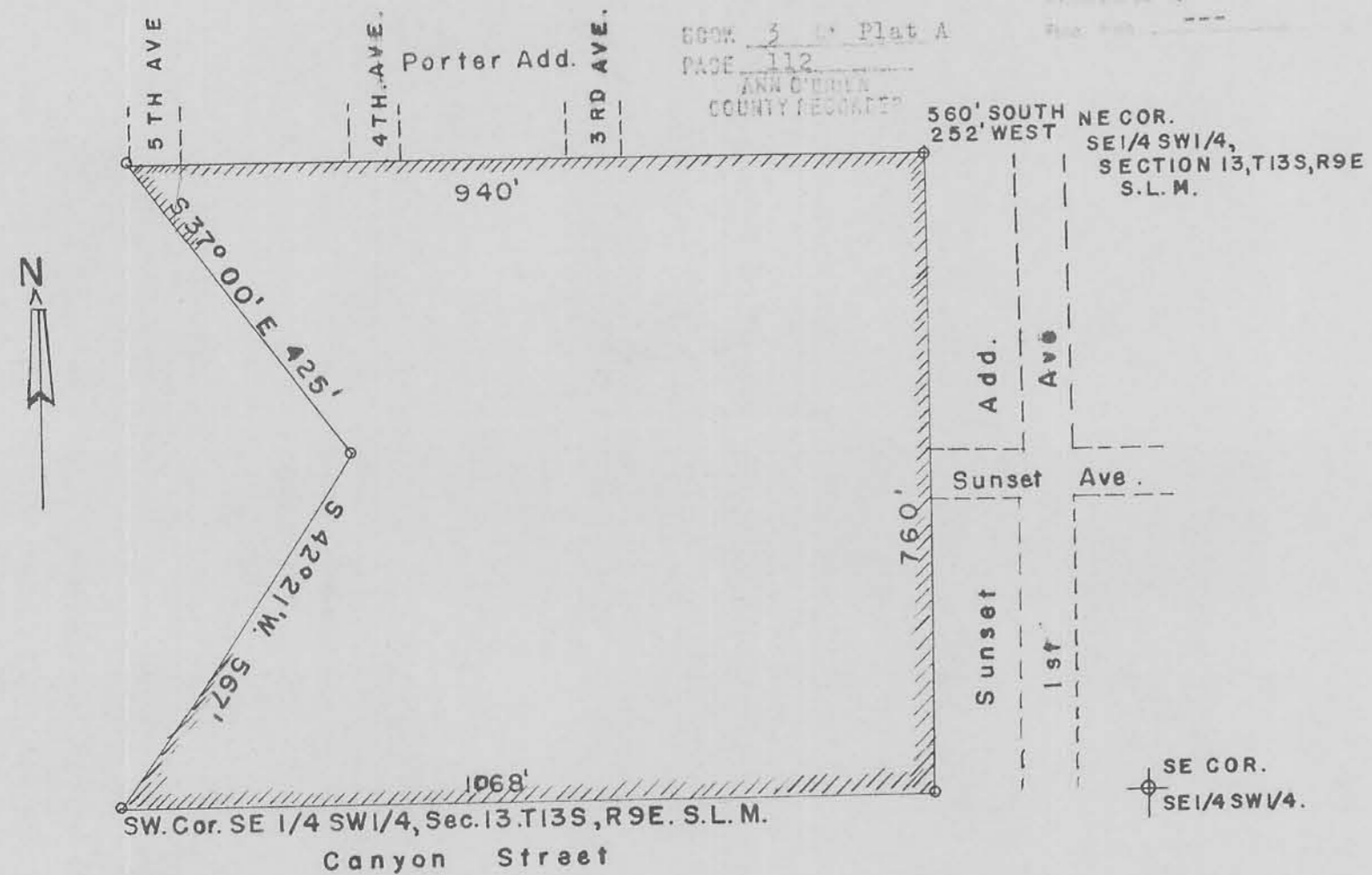
That I have, by the said authority of the Helper City Council, drawn this annexation in accordance with the specific requirements and dimensions requested.

John Bene
 JOHN BENE; License #1050

Approved and ordered filed by the City Council of Helper City, a municipal corporation, of the State of Utah in regular session this 14 day of October, 1965.

Chris Douglas
 CHRIS E. DOUGLAS
 Mayor of Helper City

ATTEST:
Joseph Bonaccorsi
 CLERK



Scale 1" = 200'

NEW SCHOOL ADDITION TO HELPER CITY.