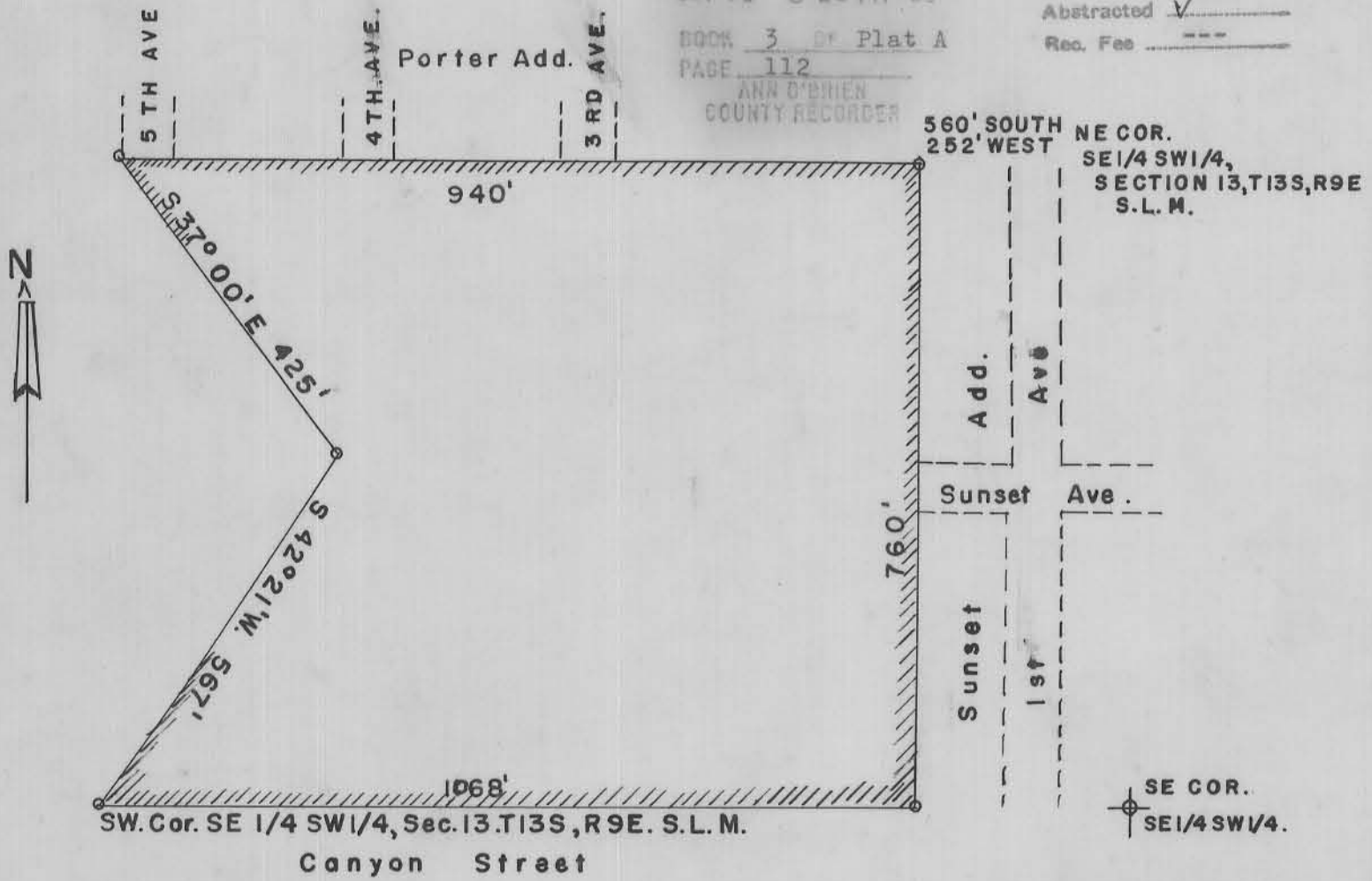


Helper City
 Oct 18 3 21 PM '65
 BOOK 3 of Plat A
 PAGE 112
 ANN O'BRIEN
 COUNTY RECORDER

Entry No. 110550
 Indexed
 Abstracted
 Rec. Fee ---

NEW HELPER SCHOOL ANNEX TO HELPER CITY
 1965

ENGINEER'S CERTIFICATE



Scale 1" = 200'

NEW SCHOOL ADDITION TO HELPER CITY,

I, John Bene, do hereby certify that I am a Professional Engineer and Land Surveyor as prescribed under the laws of the State of Utah; that I hold certificate #1050; that I have drawn the tract of land shown on this plat as a new annex to Helper City, a municipal corp. of the State of Utah, in the year 1965; and that the said tract of land is described as follows:

Beg. at pt. 560 ft. S. & 252 ft. W. of NE Cor. of SE 1/4 SW 1/4, Sec. 13, T. 13 S., R. 9 E, SLM; th. W. 940 ft.; S. 37° 00' E. 425 ft.; S. 42° 21' W. 567 ft. to SW Cor. of SE 1/4 SW 1/4 of said Sec. 13; th. E 1068 ft.; N. 760 ft. M/L to pt. of beg.

That I have, by the said authority of the Helper City Council, drawn this annexation in accordance with the specific requirements and dimensions requested.

John Bene
 JOHN BENE; License #1050

Approved and ordered filed by the City Council of Helper City, a municipal corporation, of the State of Utah in regular session this 14 day of October, September, 1965.

Chris P. Joulas
 CHRIS P. JOULAS
 Mayor of Helper City

ATTEST:

Joseph Bonar
 City Recorder

