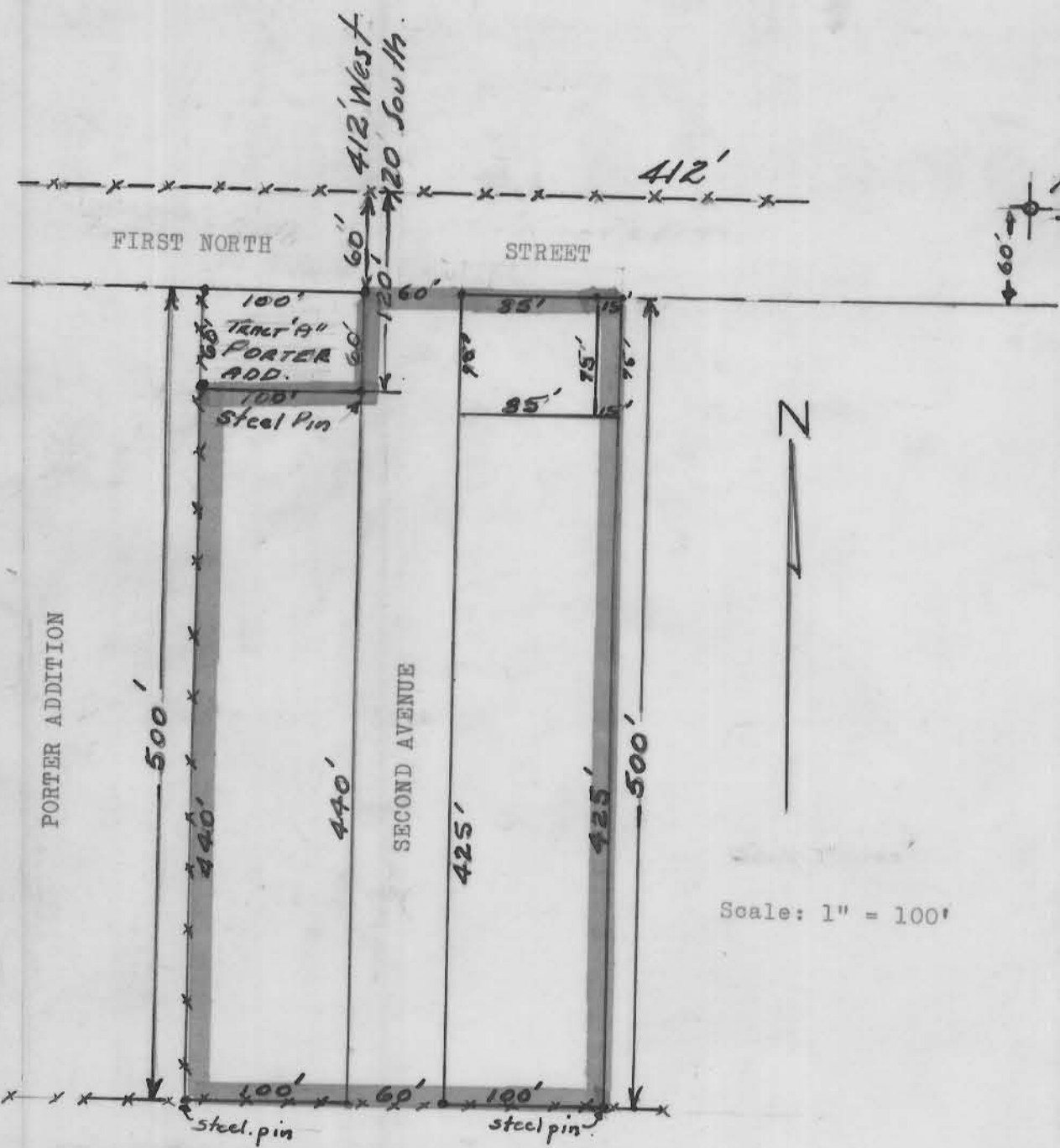


Entry No. 120311  
 Indexed    
 Abstracted   
 Rec. Fee ---

STATE OF UTAH }  
 COUNTY OF CARBON } SS  
 FILED AND RECORDED FOR  
 Helper City  
 AUG 13 12 58 PM '70  
 BOOK 3 OF Plats  
 PAGE 117  
 ANN O'BRIEN  
 COUNTY RECORDER



NE Cor. SE 1/4 SW 1/4  
 Sec. 13, T 13 S, R 9 E S. L.M.

SECOND AVENUE ANNEXATION TO HELPER CITY  
 1970

ENGINEER'S CERTIFICATE

I, John Bene, do hereby certify that I am a licensed Professional Engineer and Land Surveyor as prescribed under the laws of the State of Utah, that I hold Certificate #1050; that I have surveyed and drawn the tract of land shown on this plat as a new annexation to Helper City, a municipal corporation of the State of Utah, in the year 1970; and that the said tract of land is described as follows:

Beg. at a point 412 ft. West and 120 ft. South of the N.E. Cor. of SE 1/4 SW 1/4, Section 13, Township 13 South, Range 9 East, SLM; th. West 100 ft.; th. South 440 ft.; th. East 260 ft.; th. North 500 ft.; th. West 160 ft.; th. South 60 ft. to point of beg.

Second Avenue as shown on the plat is herein dedicated as a public street with a designated width of 60 feet.

That I have, by the said authority of the Helper City Council, drawn this annexation in accordance with the specific requirements and dimensions requested.

*John Bene*  
 John Bene, License #1050  
 April 13, 1970

Approved and ordered filed by the City Council of Helper City, a municipal corporation of the State of Utah in regular session this 7<sup>th</sup> day of July, 1970.

*Chris P. Joufflas*  
 Chris P. Joufflas  
 Mayor of Helper City

Attest:  
*Arthur Dalrymple*  
 City Recorder

CARBON COUNTY SCHOOL DISTRICT  
 (New School)

Scale: 1" = 100'