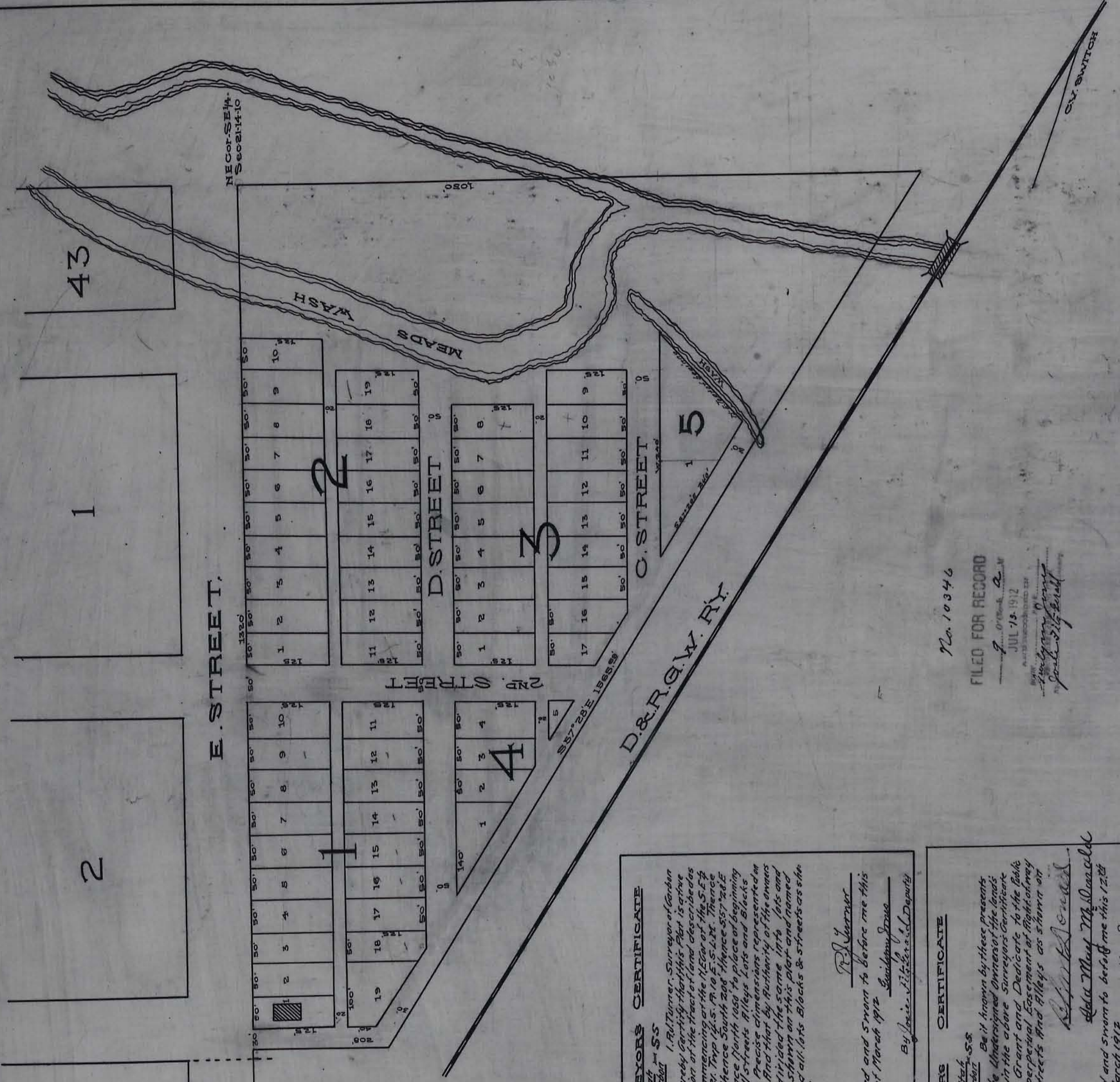


PLAT OF ISABELLA ADDITION TO PRICE CITY UTAH SCALE 1"=100'



SURVEYOR'S CERTIFICATE
State of Utah, County of Garfield
I, R. H. Turner, Surveyor for said County do hereby certify that the above described blocks, commencing at the N.E. corner of Section 21, Twp 14 S., R. 10 E., S. 12 N., Thence west 1320, thence South 200, thence East 120, thence North 100, to place of beginning and up the Price City streets as shown on this Plat. And that by authority of the laws I have subdivided the same into lots and blocks as shown on this plat and named & numbered all lots, blocks & streets as the same appear.
Subscribed and sworn to before me this 12th day of March 1912
By Louis A. Hobbs, Notary Public, Deputy

OWNERS CERTIFICATE
State of Utah, ss
Know all men, that we the undersigned do hereby Grant and Dedicate to the Public forever, perpetual Easement of Right-of-way over all streets and alleys as shown on this Plat.
Attest:
John May McQuade
Subscribed and sworn to before me this 12th day of March 1912
By Cassius J. Powell, Deputy

Approved by the board of County Commissioners in regular session this 14th day of March 1912 and ordered filed for record
Attest:
John J. Johnson
County Recorder
Approved & accepted & ordered entered to file with this plat in regular session, Clerk, Mayor & Council of Price City in regular session
Attest:
John J. Johnson
Recorder
John J. Johnson
Mayor of Price City

No. 10346
FILED FOR RECORD
JUL 15 1912
COUNTY CLERK
GARFIELD COUNTY UTAH

Isabella Addition to Price city