

**SURVEYOR'S CERTIFICATE**

State of Utah }  
County of Carbon } ss.

I, F.S. Dunlavy, Deputy Surveyor of Carbon County, do hereby certify that the hereunto attached is a full, true and correct plat, according to the Price City Survey, of that certain piece of land petitioned by John Potter, et al, to be annexed to the corporate limits of Price City, Carbon County Utah, said tract of land being contiguous to the corporate limits of Price City, Utah and being more particularly described as follows: - commencing at a point which is 498.02 ft. north of the Southeast corner of Block #8, and on the east boundary of Block #8, Sec. 16 - Twp. 14S., R. 10E., S.L.B. & M. the same being sometimes known and designated as Block #8 of the Local Survey, thence North 741.22 ft, thence East 530.4 ft to the N.E. Corner of Lot 3, Block #9, thence Southeast to the N.W. Corner of Lot 4, Block #10, thence East 532.18 ft to the West boundary of Block #11, thence South 620.20 ft to the corporate limits of Price City, Utah, thence West along the corporate limits 1161.33 ft to the place of beginning.

*F.S. Dunlavy*  
Deputy Surveyor of Carbon County

Subscribed and sworn to before me this 19<sup>th</sup> day of May 1914

*C.M. Whinnery*  
Notary Public

My Commission Expires  
January 17, 1915.

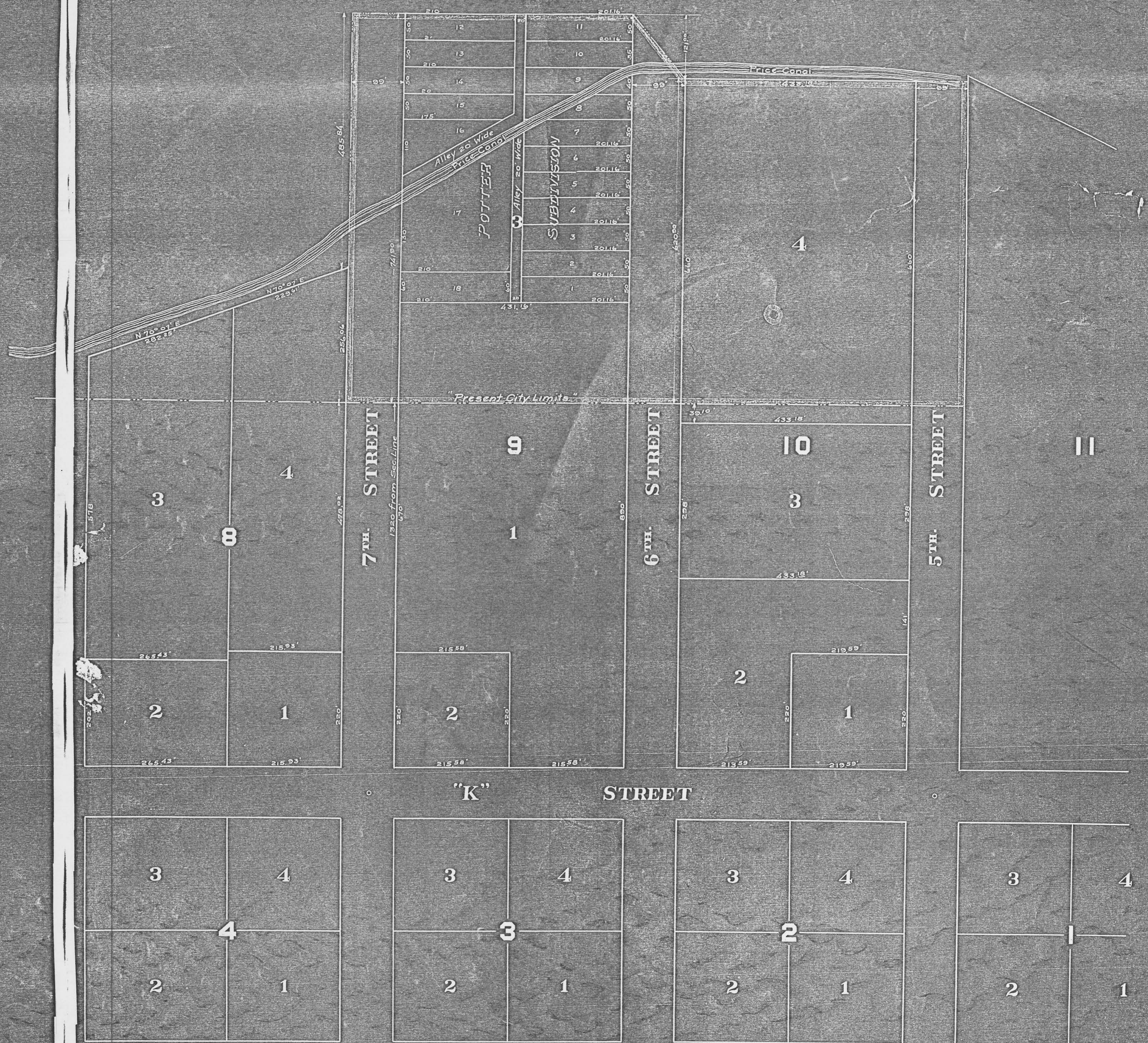
Approved by the Mayor and City Council of Price City, Carbon County, Utah in regular session this 15<sup>th</sup> day of May 1914

*Wanda Brundson*  
Mayor

*W. L. Lauber*  
City Recorder

Filed for record this 1<sup>st</sup> day of September 1916

*Barbara J. Janssen*  
County Recorder



PLAT  
SHOWING AN ENLARGEMENT OF THE  
CORPORATE LIMITS OF PRICE CITY,  
UTAH  
MAY 19 1914

SCALE - 1" = 100  
Wetzel + Herres  
Price Utah  
F.S. Dunlavy

FILED FOR REC  
3 000 4  
SEP 11 1916  
Barbara J. Janssen  
County Recorder