

John A. Powell
Addition
to
Price vial

(Part of Section
21 - Twp 14
8 R 10 East

I, E. O. Anderson, Civil Engineer, of Price, Carbon County, do hereby certify that the here unto attached is a full, true and correct plat of that certain piece of Land partitioned by John A. Powell et al. to be annexed to the Corporate Limits of Price City, Carbon County, Utah. Said Tract of Land being more particularly described as follows: Beginning 33 ft. East of the N.W. corner of S.W 1/4 Section 21, Twp. 14 South Range 10 East, S.L.M. thence running East 1287 ft.; thence South 544 ft.; thence West 1287 ft.; thence North 544 ft. to the place of beginning.

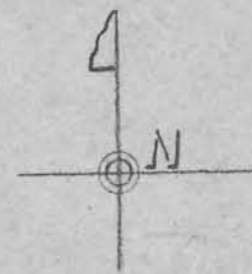
JOHN A POWELL ADDITION

Approved by the Mayor and
City Council of Price City, Carbon
County, in regular session this 30th
day of May, 1929

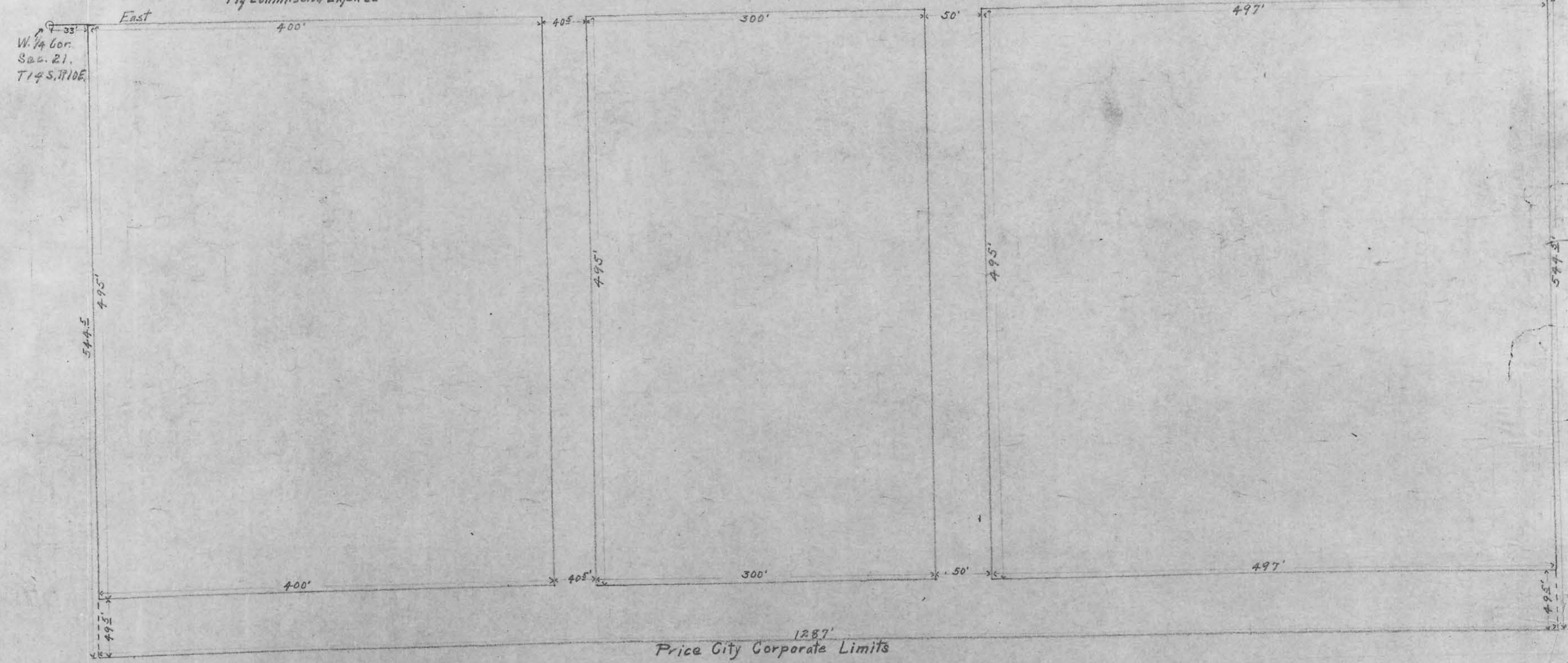


Attest
Richard [Signature]
City Clerk

#18780
FILED FOR RECORD
10 am a.m.
MAY 2 1929
E. O. Anderson
Civil Engineer



Subscribed and sworn to before me this 27th day of
May, 1929.
My Commission Expires
R. J. [Signature]
Notary Public



1287'
Price City Corporate Limits