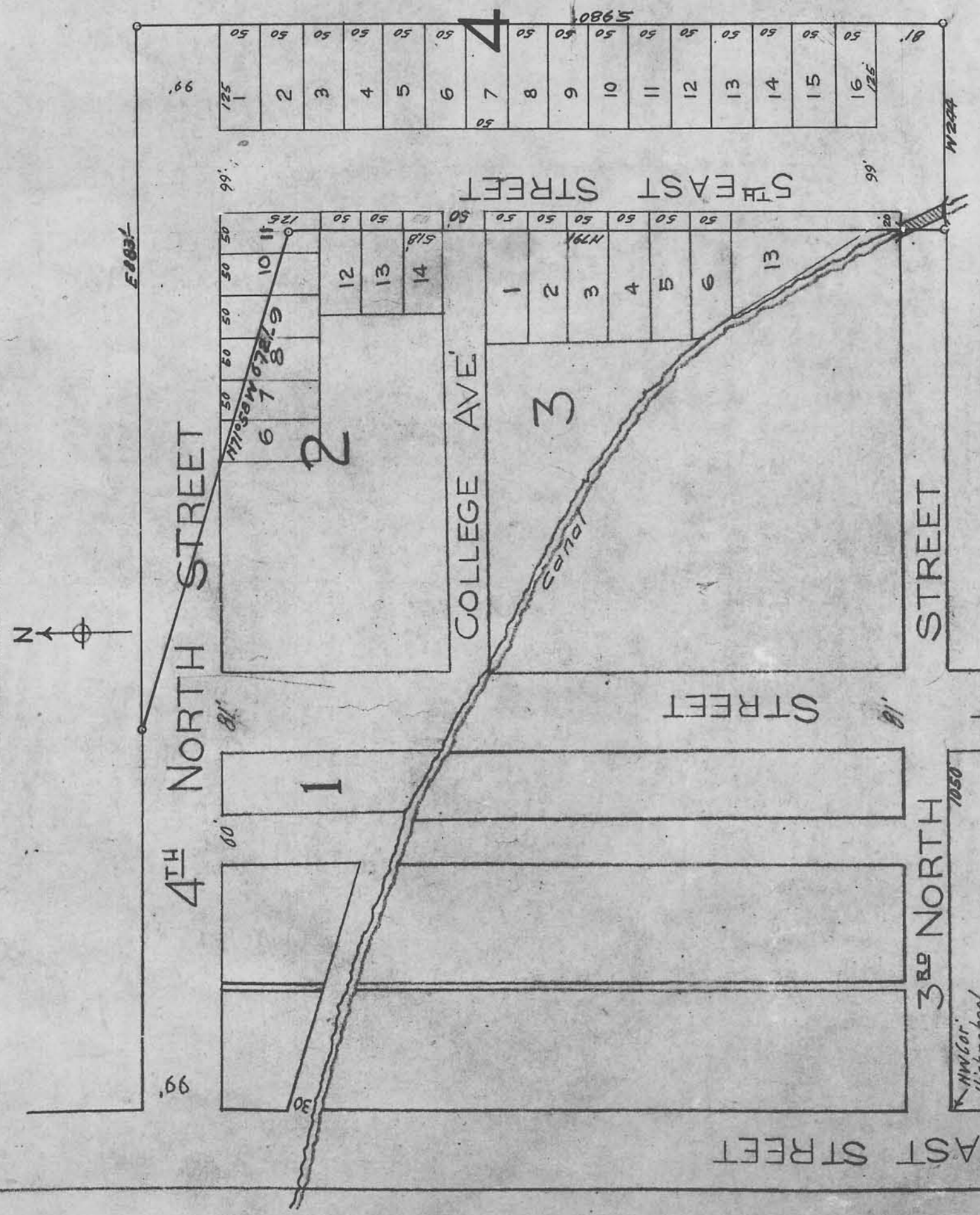


Plat of Carbon Annex

PLAT OF CARBON ANNEX

SCALE 1"=100'



DEDICATION

State of Utah
County of Carbon

Be it known by these Presents that J. Bracken Lee Mayor of Price Utah by authority duly vested in me at a meeting of the Price City Council held April 10th 1939 do hereby Grant and Dedicate to the Public Forever a perpetual Easement of Right of Way over all Streets and Alleys as shown on this Plat and described in the Surveyors certificate and that by said Authority this Plat was Made Named and designated.

J. Bracken Lee
Mayor of Price

starts of Utah
County of Carbon

On this the 10th day of April 1939 personally appeared before me J. Bracken Lee Mayor of Price City who after having been duly sworn and in the presence of the undersigned signed by him a certain certificate of Price City and by authority of the Council of that Regular Session April 10th 1939 at that Price City by him duly signed the same.

J. Bracken Lee
Mayor of Price

My Commission Expires June 10, 1942

SURVEYORS CERTIFICATE

State of Utah
County of Carbon

I, R. Turner a Civil Engineer do hereby certify that this Plat is a true representation of lands owned in fee simple by Price City and described as follows to wit: Commencing at the NW corner of High School Subdivision Thence East 1950 To Place of beginning Thence North 791' Thence N 71° 58' 1/2" E 672' Thence East 885' Thence South 980' Thence West 294' To place of beginning and that by Authority of the Mayor and City Council I have subdivided the same into Lots and Blocks as shown on this Plat, and that all lots and Blocks are precisely of the dimensions as stated herein and that this Plat is to be known as Carbon Annex and all lots and Blocks by the numbers shown herein.

R. Turner
Surveyor

Subscribed and Sworn to before me this 10th day of April A.D. 1939

J. Bracken Lee
Mayor of Price Utah

My Commission Expires June 10, 1942

Approved by the Mayor and City Council this 10th day of April A.D. 1939 in Regular Session

J. Bracken Lee
Mayor

ATTEST
J. Bracken Lee
City Recorder

FILED FOR RECORD