

33 1/2 Page 33 1/2 Parkdale Blk 15 below

NOTES ON COUNTY ROAD SURVEY PRICE TO UTAH RAILROAD.

Table with columns: Sta, Dist, Hnd Angle, Bearing, Needle, Total Lat, Total Dept, Remarks. Contains survey data for 40 stations.

PROPOSED EXTENSION OF CITY LIMITS OF PRICE, UTAH Scale 1" = 200'

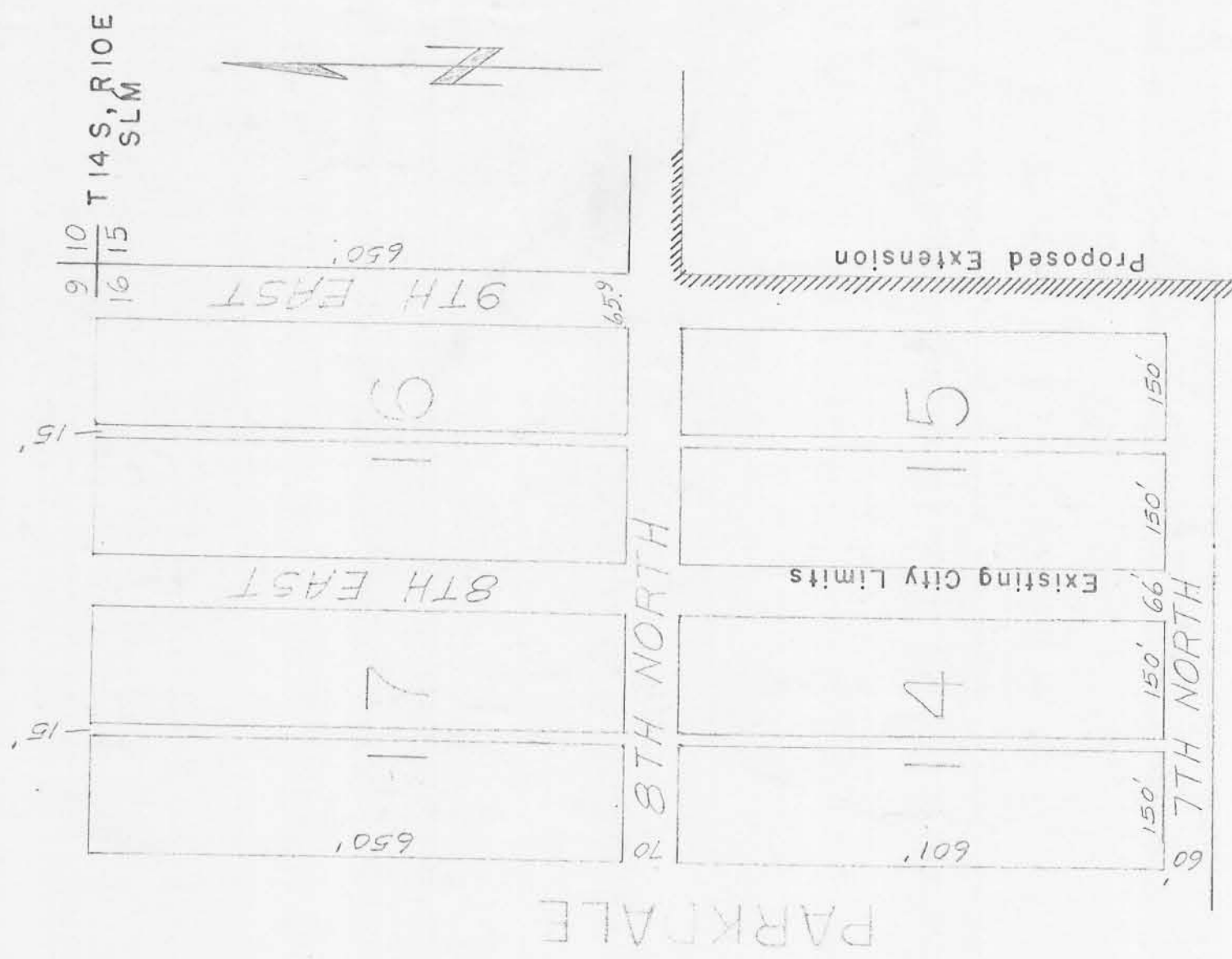
APPROVED BY ORDINANCE NO. PASSED IN REGULAR SESSION ON OCTOBER 8th, 1956.

William J. Webb Mayor

Attest: City Recorder

Carl Nymon of Price, Utah, hereby certifies that the within plat correctly shows the dimensions of the property involved and is complete and accurate in all respects.

Carl Nymon



City of Price, Utah, Ordinance No. 1154-56, passed Oct 9 3 21 PM '56.

For Ordinance # 1154-56 See Parkdale Blk 15 Page 69 from Price city