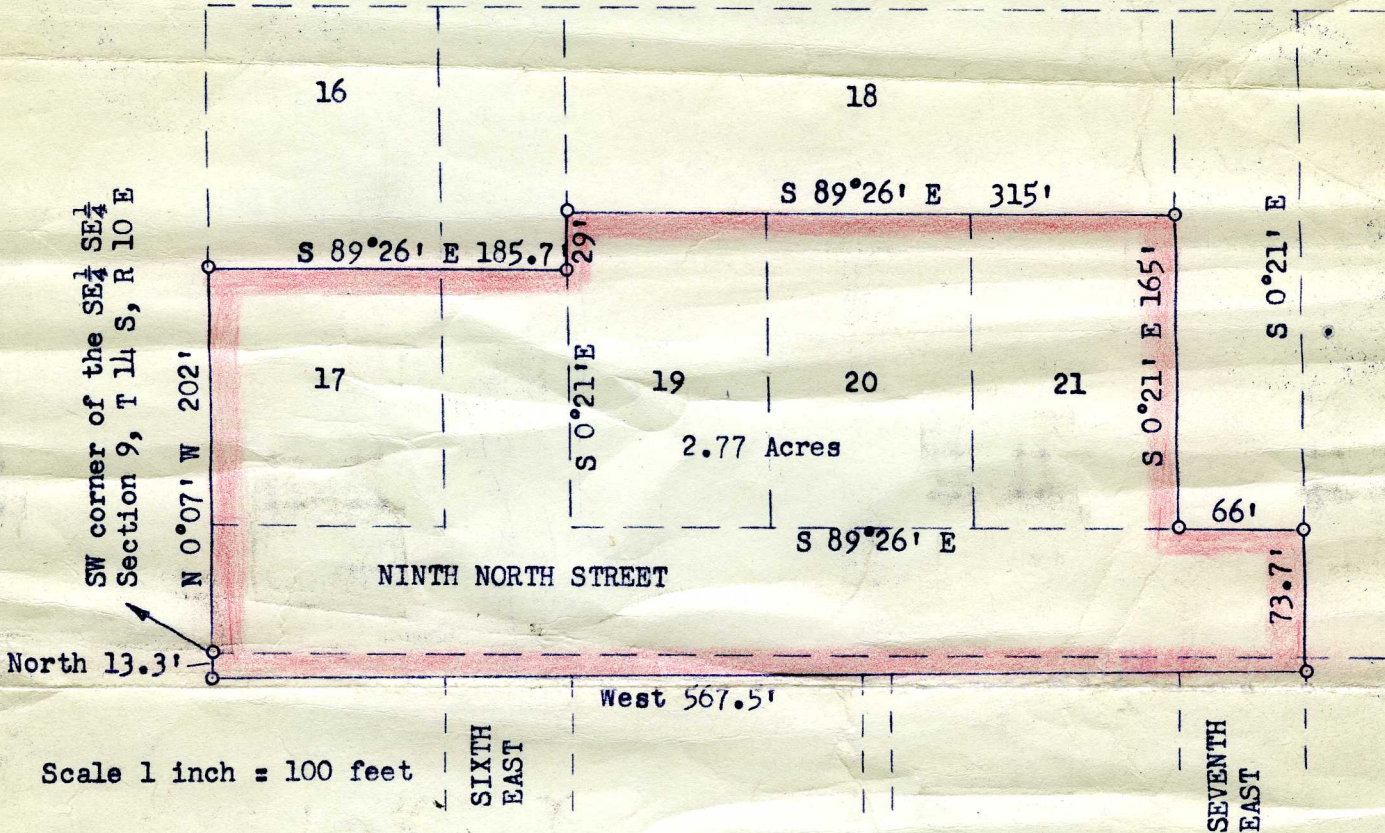


PLAT SHOWING THE CORPORATE LIMITS of PRICE,

UTAH, AS EXTENDED BY ORDINANCE NO. 1195-63



P A R K D A L E T O W N S I T E

ENGINEER'S CERTIFICATE

I, Carl Nyman, a licensed Civil Engineer within the State of Utah, do hereby certify that this map truly and accurately shows the corporate limits of Price, Utah, as extended by Ordinance No. 1195-63

*Carl Nyman*

Approved by the Mayor and City Council this 24 day of June, 1963

*William J. Welsh*  
Wm. J. Welsh, Mayor

Attest: *F. Hampton McArthur*  
F. Hampton McArthur, Recorder

Entry No. 104145  
Indexed            
Abstracted            
Rec. Fee         

STATE OF UTAH )  
COUNTY OF CARBON ) SS  
FILED AND RECORDED FOR  
Price City  
AUG 27 2 17 PM '63  
IN BOOK 3 OF Plats  
PAGE 107  
Ann O'Brien  
COUNTY RECORDER

