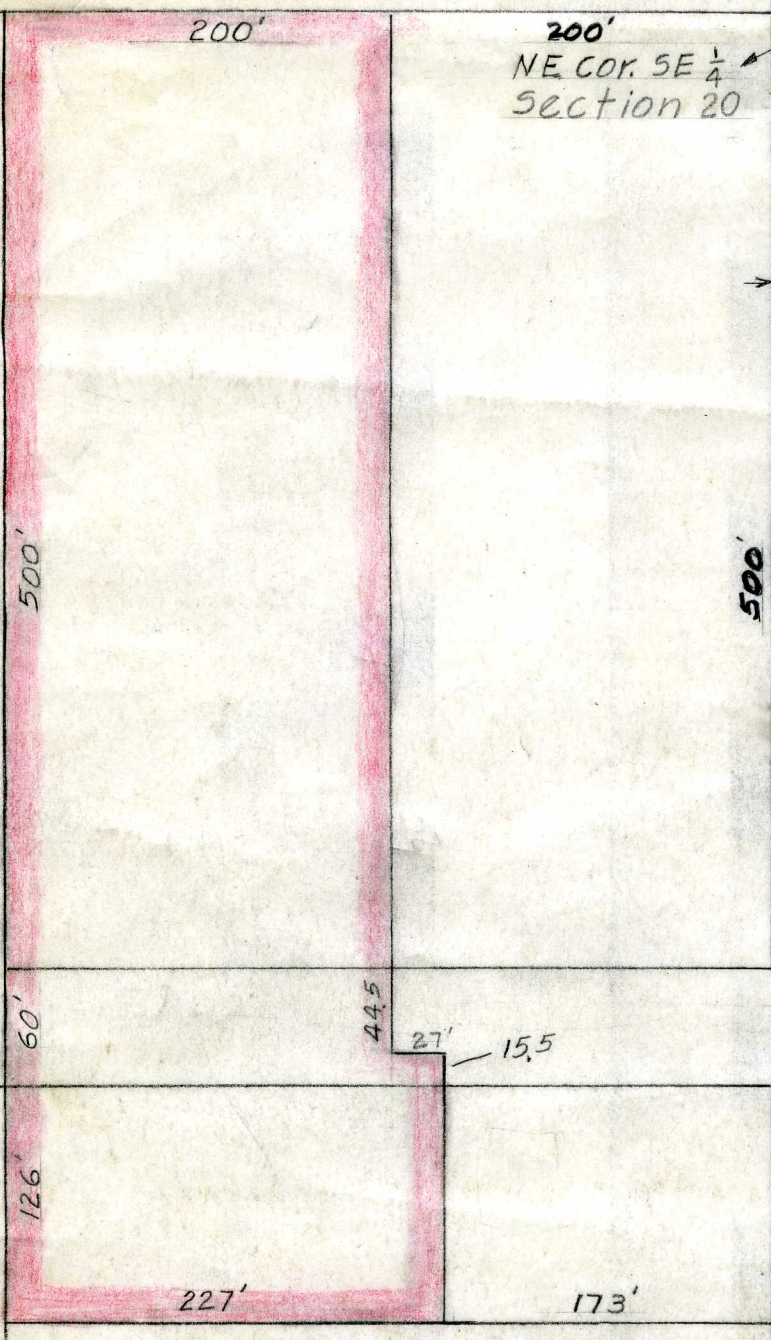


4TH SOUTH



200'
NE COR. SE 1/4
Section 20

W 1/4 Corner
Sec. 21, T14S, R10E

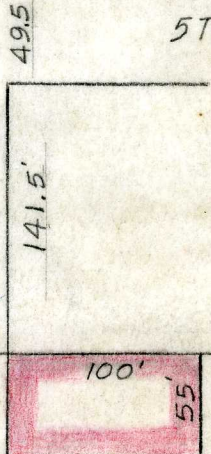
33'
33'
3RD WEST

STATE OF UTAH } SS
COUNTY OF CARBON }
FILED AND RECORDED FOR
Price City
MAR 17 4 39 PM '66

BOOK 3 OF Plats
PAGE 113
ANN O'BRIEN
COUNTY RECORDER

Entry No. 111627
Indexed
Abstracted
Rec. Fee -----

5TH SOUTH



Note - Shaded areas show the additions.

Scale linc = 100 feet

ENGINEER'S CERTIFICATE

I, Carl Nyman, a licensed Civil Engineer within the State of Utah and City Engineer of Price, Utah, hereby certify that this map truly and accurately shows the City Limits of Price, Utah as extended by Ordinance No. 1203-65

Carl Nyman

