

STATE OF UTAH  
 COUNTY OF KANE 158  
**PRICE CITY**  
 JUN 11 3 41 PM '76  
 BOOK 3 OF PLATS  
 PAGE 155  
 ANN O'BRIEN  
 COUNTY RECORDER

Entry No. 13847  
 Indexed ✓  
 Abstracted ✓  
 Rec. Fee ---

**SURVEYOR'S CERTIFICATE**

I GEORGE W CASSITY do hereby certify that I am a Registered Professional Engineer and Land Surveyor and that I hold Certificate # 649 as prescribed under the laws of the State of Utah. I further certify that I have surveyed the tract of land as plated hereon and find the boundaries to be as represented by the plat. That I have prepared the Master Plat with the approval of the owners as a guide for development.

*George W Cassity*  
 GEORGE W. CASSITY

**OWNER'S APPROVAL**

We the owners of Price Enterprises, Inc. and of the tract of land represented hereon more particularly described as follows: Part of the SW 1/4 of the SE 1/4 of Section 9, T14S, R10E, SLB & M commencing S89°26'E 66.50' ft. from S 1/4 corner, thence N0°37'E 370.75 ft thence N17°37'12"E 251.36 ft thence N0°37'E 735.41 ft thence S89°41'E 1172.08 ft thence S0°07'E 1351.68 ft thence N 89°26'W 1262.87 ft to the beginning for the incorporation into Price City, Utah. Containing 37.39 Ac.

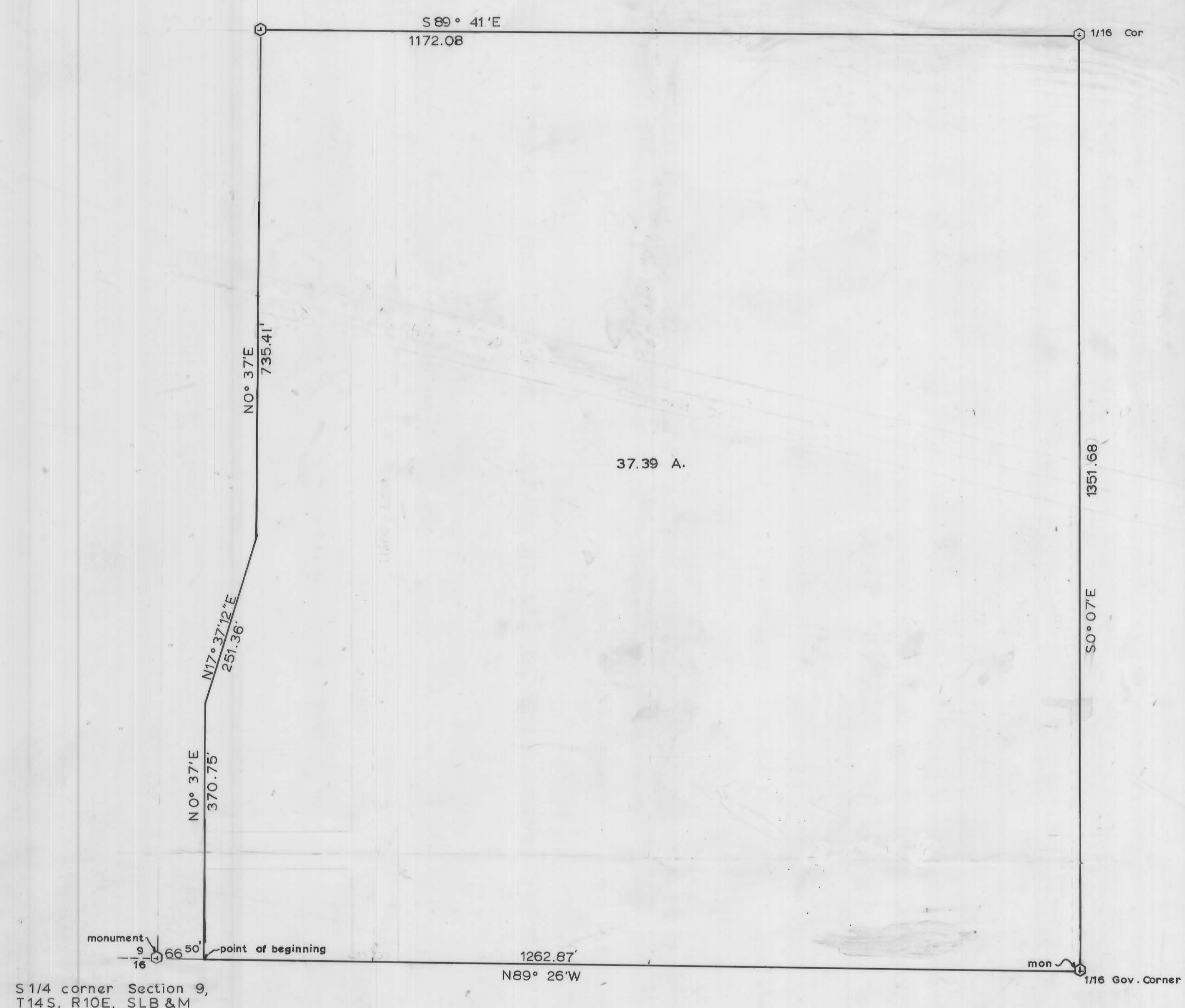
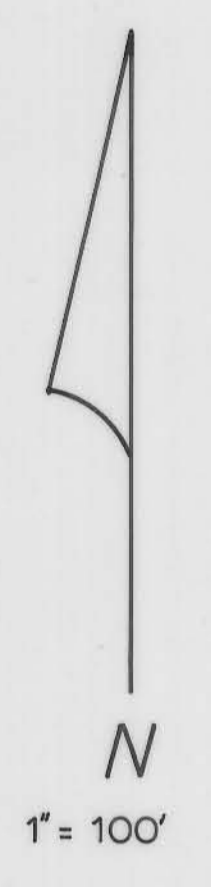
PRICE ENTERPRISES INC.

*Walter J. Pattenick Jr.*  
 President

*George W Cassity*  
 Secretary

ATTEST *Patricia A. ...*  
 Notary Public

My Commission Expires 4-16-79  
 Price, Utah



S 1/4 corner Section 9,  
 T14S, R10E, SLB & M

**PARKCREST COVE NO. 2**

ANNEXATION - PLAT - PRICE ENTERPRISES PROPERTY  
ORDINANCE # 1270-76

**CITY ENGINEER APPROVAL**  
 APPROVED this 5<sup>th</sup> day of MAY A.D. 1975  
 by PRICE CITY ENGINEER

*John H. ...*  
 ENGINEER

**PLANNING COMMISSION APPROVAL**  
 APPROVED this 6<sup>th</sup> day of MAY A.D. 1975  
 by PRICE PLANNING COMMISSION

*Robert J. ...*  
 CHAIRMAN

**APPROVAL OF FORM**  
 APPROVED as to form this 24<sup>th</sup> day  
 of MAY A.D. 1975

*John B. ...*  
 ATTORNEY

**CITY COMMISSION APPROVAL & ACCEPTANCE**  
 PRESENTED to the board of City Council this  
24<sup>th</sup> day of MAY A.D. 1975 at  
 which time this Annexation was approved and  
 accepted  
 At test: *...* CLERK *...* MAYOR

**CMC - CASSITY & ASSOCIATES**

scale: 1"=100' P.C.  
 date 4-25-75

MASTER PLAT PARKCREST COVE  
 PRICE ENTERPRISES INC. 1