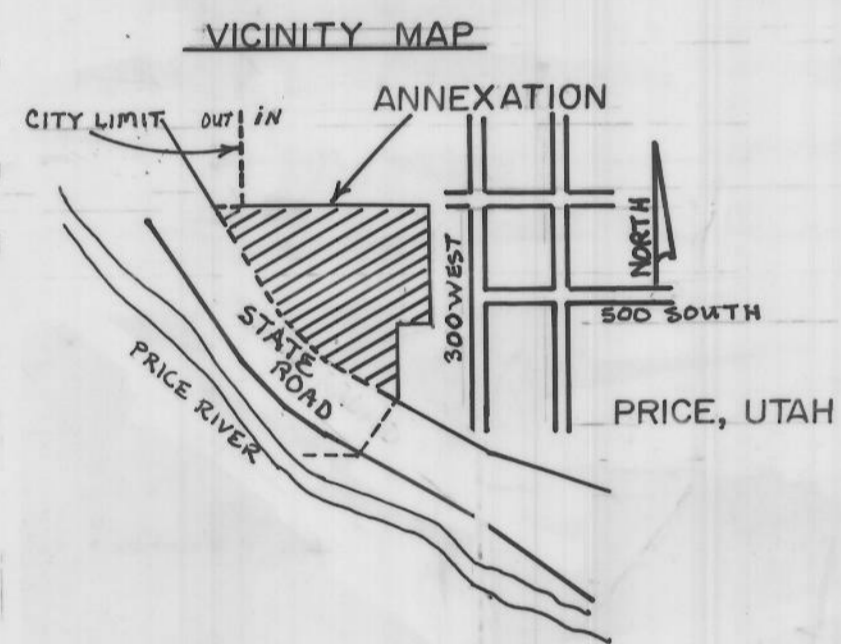


WEST PRICE ANNEXATION 1982



BOUNDARY DESCRIPTION

BEGINNING AT A POINT 233 FEET WEST OF THE EAST QUARTER CORNER OF SECTION 20; T14S, R10E; S.L.B. & M.; THENCE IN A SOUTHERLY DIRECTION ALONG THE OLD CITY LIMIT SOUTH 687.60 FT; THENCE WEST 200 FEET; THENCE SOUTH 387.71 FEET TO THE STATE ROAD RIGHT OF WAY; THENCE ALONG THE STATE ROAD RIGHT OF WAY NORTH 59° 38' WEST 365.76 FEET; THENCE NORTH 44° 53' WEST 401.80 FEET; THENCE NORTH 34° 10' WEST 732.06 FEET; THENCE ALONG THE OLD CITY LIMIT EAST 1210.24 FEET TO THE POINT OF BEGINNING. CONTAINS 18.00 ACRES. ZONED (RM-7) MULTIPLE RESIDENTIAL 7.

SURVEYOR'S CERTIFICATE

I PHILLIP R. ENGLE, DO HEREBY CERTIFY THAT I AM A REGISTERED LAND SURVEYOR AND THAT I HOLD LICENSE NO. 4667, AS PRESCRIBED BY THE LAWS OF THE STATE OF UTAH, AND I FURTHER CERTIFY THAT THE ABOVE DESCRIPTION DEPICTS THE CORRESPONDING PARCELS OF LAND ACCORDING TO WRITTEN RECORDS RECORDED IN THE CARBON COUNTY RECORDER'S OFFICE. I FURTHER CERTIFY THAT THIS PLAT DOES NOT REPRESENT THE RESULTS OF AN ACTUAL FIELD SURVEY EXCEPT AS SHOWN.

Phillip R. Engle DATE JAN. 24, 1983 R.L.S. NO. 4667

approval as to form:

approval as to form this 1st day of February, 1982
PRICE CITY ATTORNEY Lawrence R. ...

city engineer's approval: — this plat has been reviewed for conformance with the records of this office and approved this 24th day of January, 1982. PRICE CITY ENGINEER D.W. Eckhoff

price city council approval: presented to the city council of price, utah this 11th day of AUGUST, 1982, at price, utah, and hereby approved and accepted.

signed: Art Lee Martines ART LEE MARTINES, MAYOR
attest: Hampton McArthur P. HAMPTON McARTHUR, RECORDER



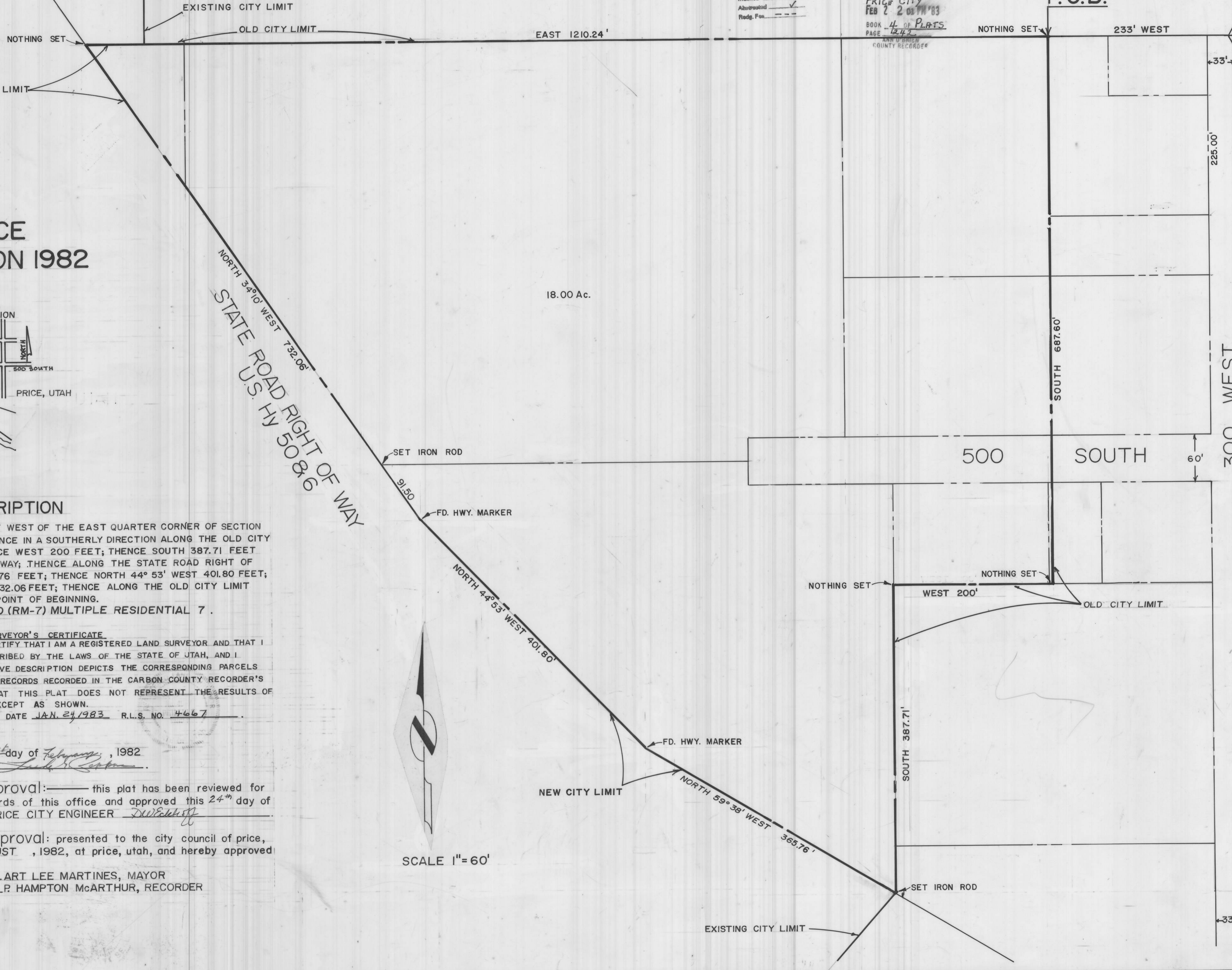
SCALE 1"=60'

Entry No. 167075
Indexed ✓
Abstracted ✓
Reg. Fee ---

STATE OF UTAH
COUNTY OF CARBON | SS
FILED AND RECORDED FOR
PRICE CITY
FEB 2 2 01 PM '83
BOOK 4 OF PLATS
PAGE 144
CARBON COUNTY RECORDER

P.O.B.

E/4 COR. SEC. 20
T14S-R10E
S.L.B. & M.



No.	By	Date
Checked	T.R.E.	1-24-83
Drawn	D.W.E.	
Scale	1"=60'	

**ECKHOFF, WATSON and
PREATOR ENGINEERING**
ENGINEERS • PLANNERS • SURVEYORS



WEST PRICE ANNEX. 1982

Project Number
EP184161
Sheet Number