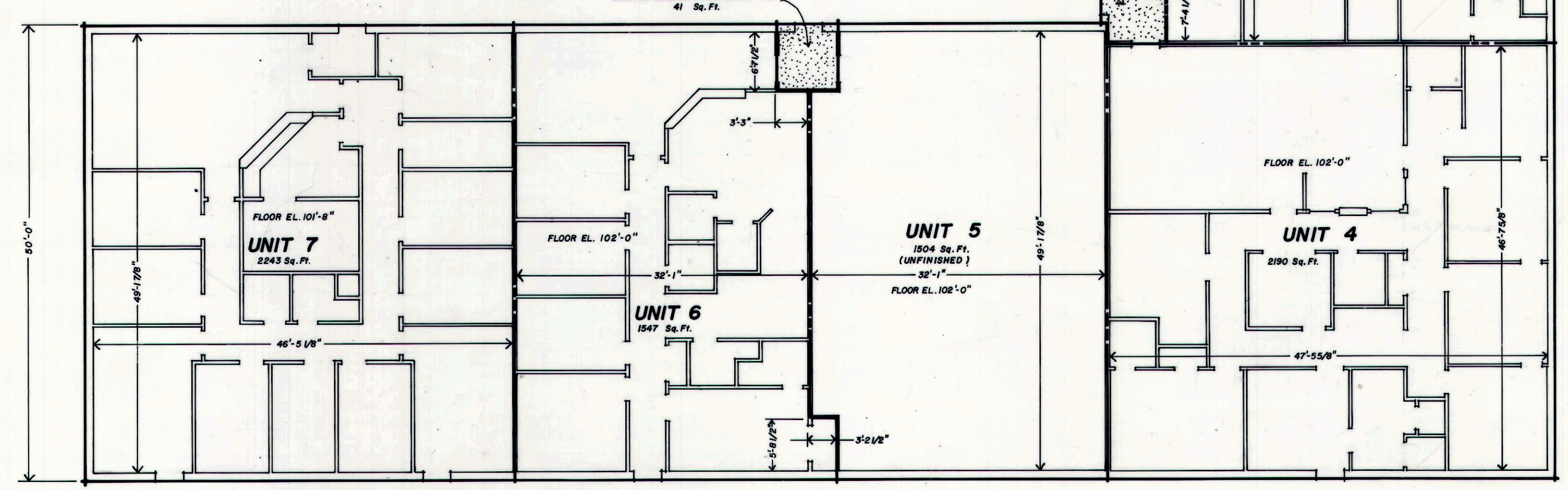
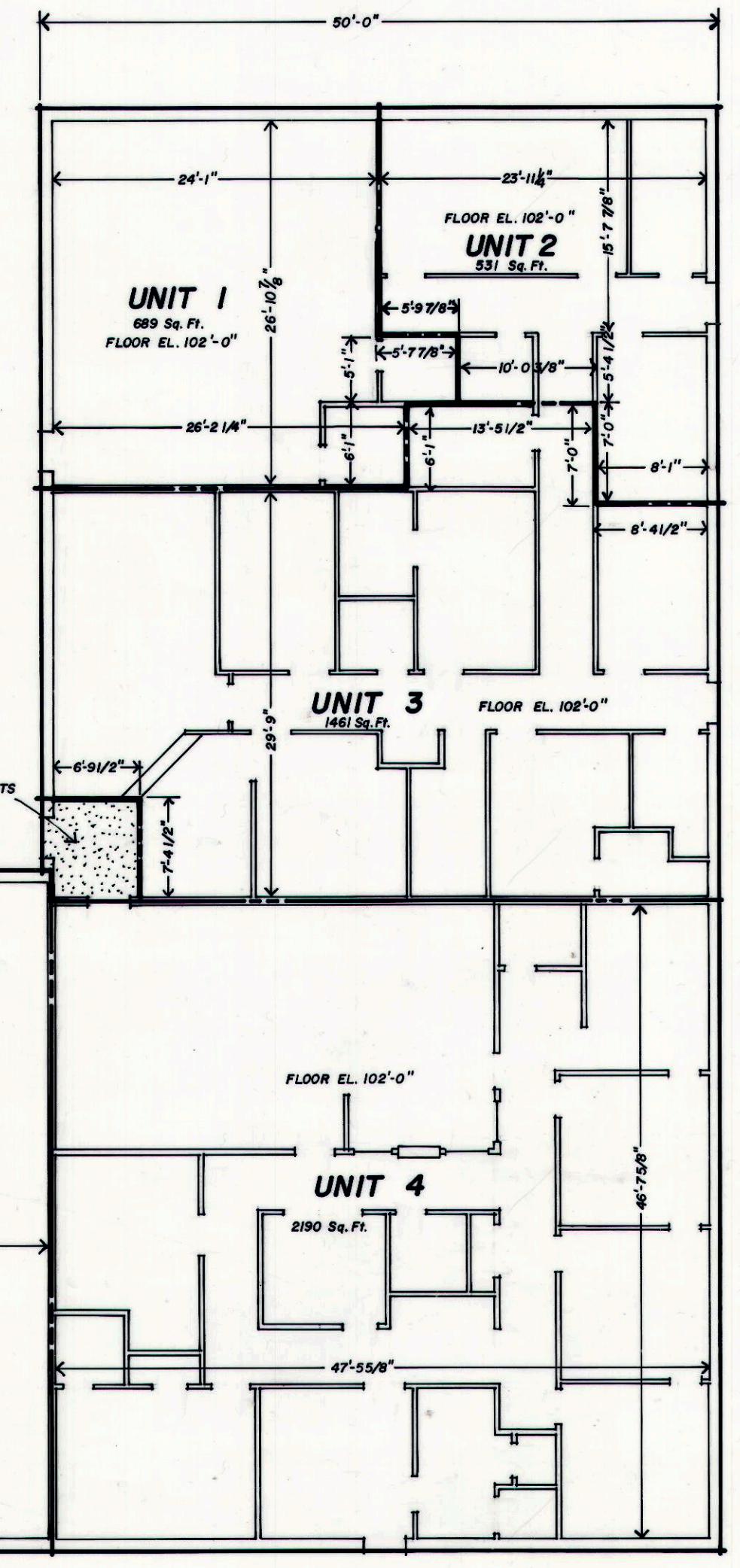
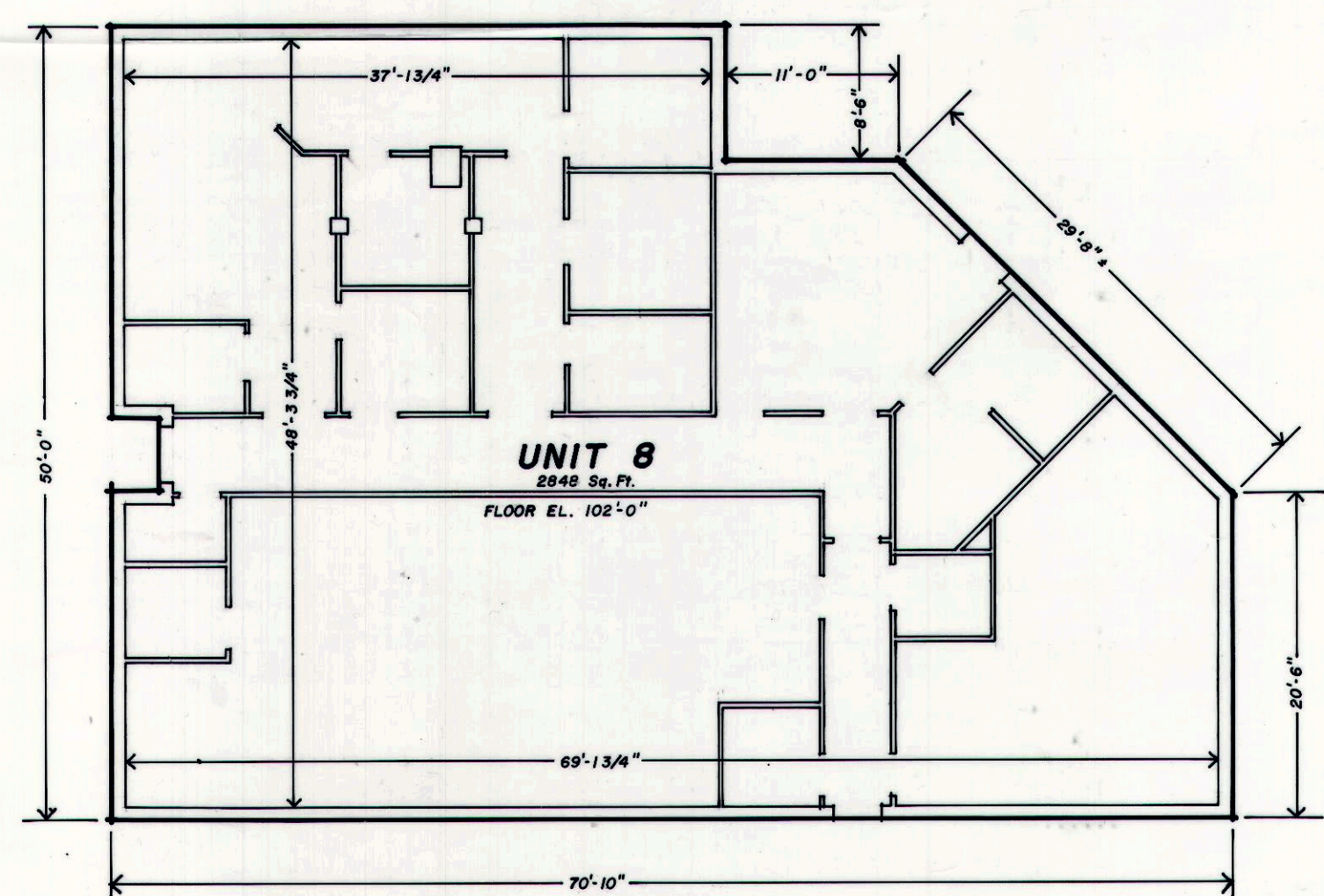
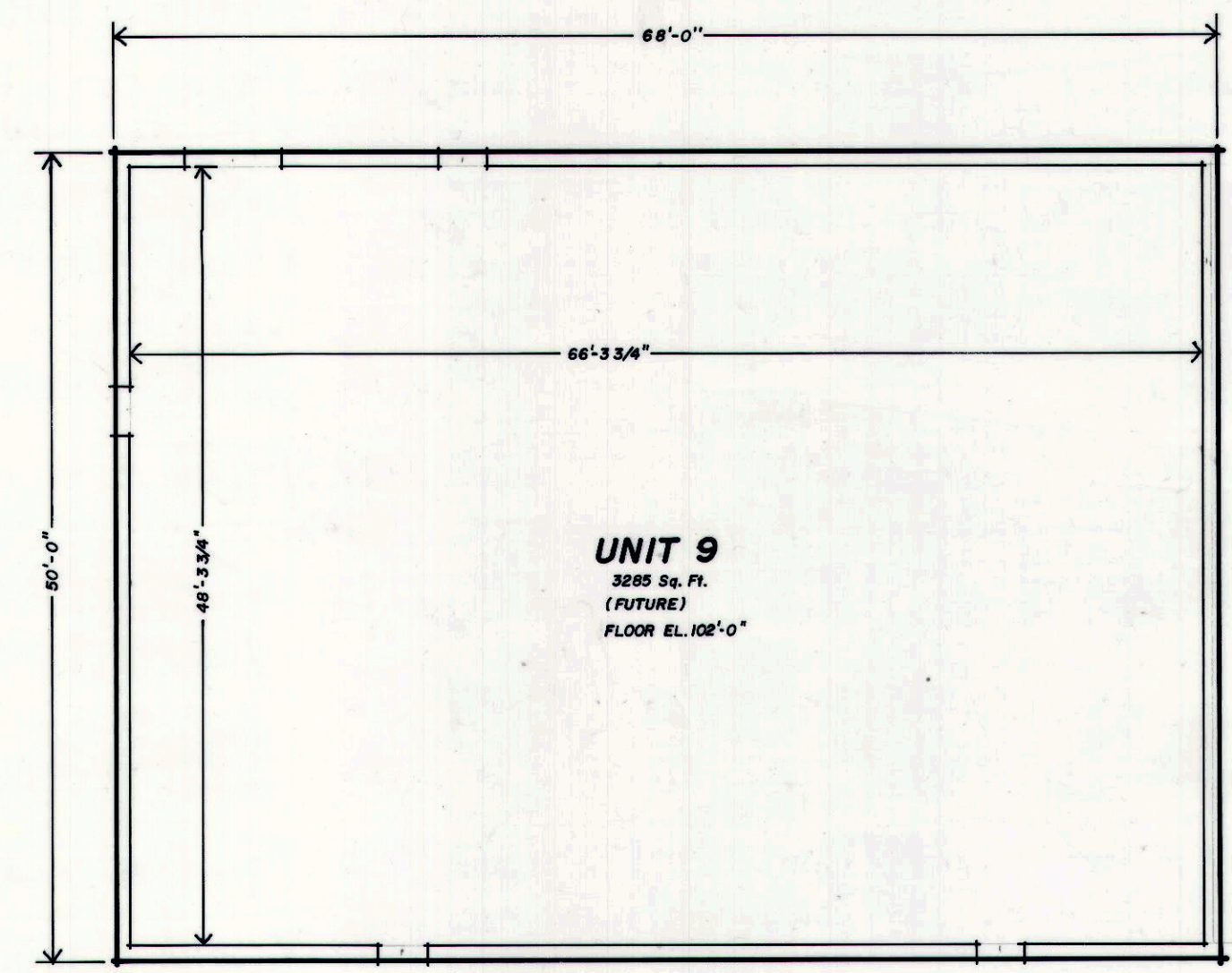
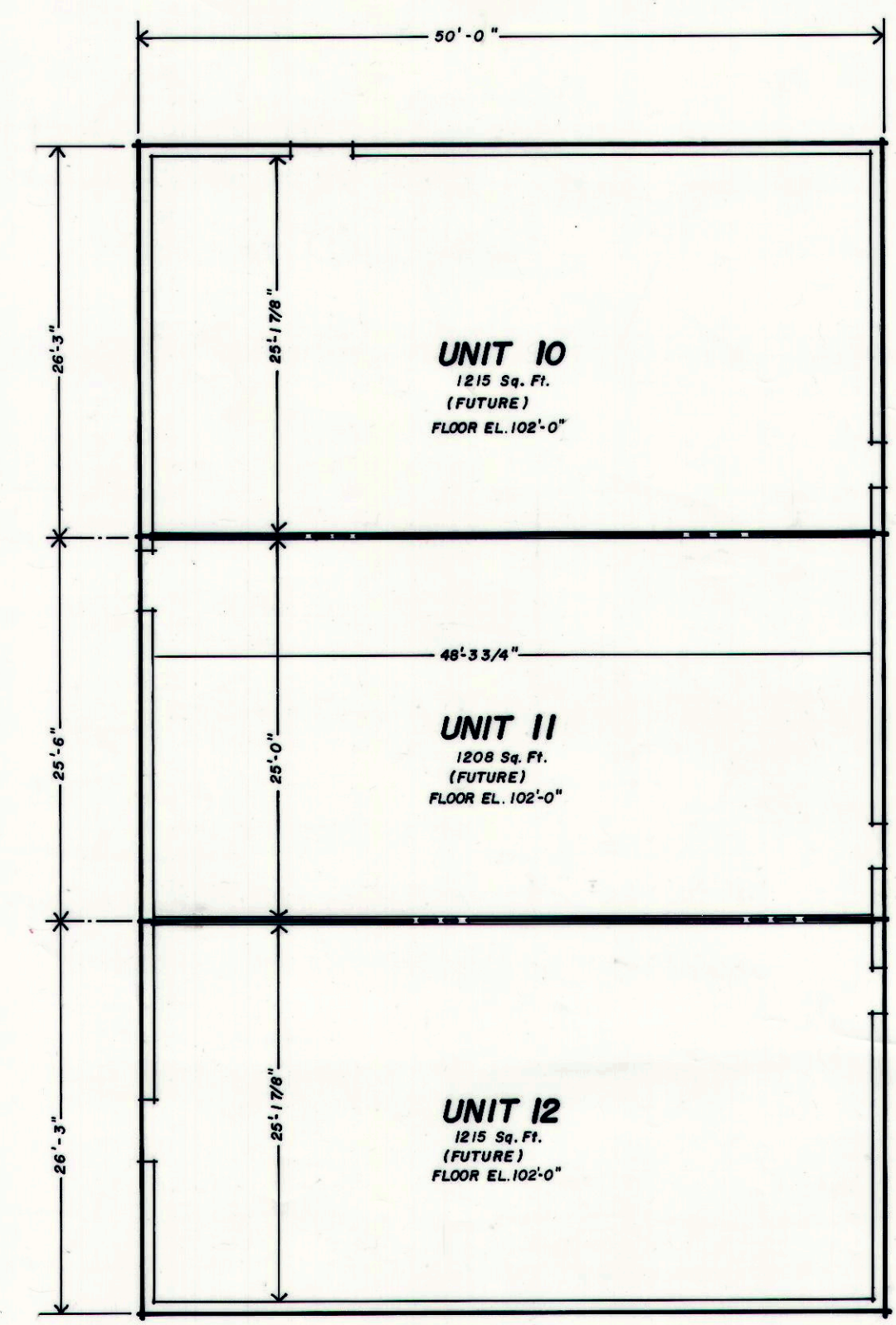


Entry No. 12324
 Abstracted
 Reg. Fee. 36.00

BOOKCLIFF PROFESSIONAL PLAZA

SCALE : 3/32" = 1'-0"



NOTES :

- 1- DIMENSIONS AND ELEVATIONS WERE TAKEN FROM ARCHITECTURAL PLANS SUPPLIED BY GOULD TURNER GROUP, P.C. AND AS BUILT DRAWINGS SUPPLIED BY O.S.C. CONSTRUCTION.
- 2- ACTUAL LOCATION OF WALLS TAKES PRECEDENCE OVER DIMENSIONS WHEN THERE IS A CONFLICT.
- 3- AREAS ARE CALCULATED USING INSIDE DIMENSIONS TO EXTERIOR WALLS OF EACH UNIT AND ROUNDED TO NEAREST WHOLE NUMBER.
- 4- ALL BEARING WALLS CONSTITUTE PART OF THE COMMON ELEMENTS TO THE FINISHED SURFACES OF SAID WALLS.
- 5- ALL CONDUITS AND WIRES TO OUTLETS AND ALL OTHER UTILITY LINES TO OUTLETS, REGARDLESS OF LOCATION, CONSTITUTE PART OF THE COMMON ELEMENTS.

Empire Engineering & Land Surveying

86 NORTH 200 EAST PRICE, UTAH 84501 PHONE (801) 637-7498

BOOKCLIFF PROFESSIONAL PLAZA

Drawn By: B.L.P.	Approved By:	Drawing No. EEHP-048D 2/2
Date: 3/11/85	Scale: 3/32" = 1'-0"	

REVISED 4/14/86 D.L.P.