

PHASE I - BROKEN MESA SUBDIVISION

00051881 Bk00005 Pg00013-00013
 ANN B. O'BRIEN-COUNTY OF CARBON
 1995 OCT 02 16:06 PM FEE \$38.00 BY
 REQUEST: BOYD L. MARSHING, FAN PTSHIP

SURVEYOR'S CERTIFICATE

I, EVAN E. HANSEN, DO HEREBY CERTIFY THAT I AM A REGISTERED LAND SURVEYOR, AND THAT I HOLD CERTIFICATE NO. 145656, AS PRESCRIBED UNDER THE LAWS OF THE STATE OF UTAH. I FURTHER CERTIFY THAT BY AUTHORITY OF THE OWNERS, I HAVE MADE A SURVEY OF THE TRACT OF LAND SHOWN ON THIS PLAT AND DESCRIBED BELOW, AND SUBDIVIDED SAID TRACT OF LAND INTO LOTS AND STREETS, HEREAFTER TO BE KNOWN AS:

PHASE I - BROKEN MESA SUBDIVISION

AND THAT THE SAME HAS BEEN CORRECTLY SURVEYED AND STAKED ON THE GROUND AS SHOWN ON THIS PLAT.

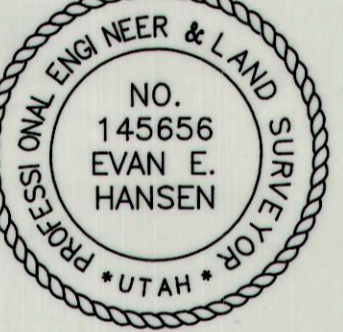
DESCRIPTION

A PARCEL OF LAND LOCATED IN CARBON COUNTY, STATE OF UTAH, WHICH IS IN THE SE 1/4 NW 1/4 AND THE NE 1/4 SW 1/4 OF SECTION 1, TOWNSHIP 14 SOUTH, RANGE 9 EAST, SALT LAKE BASE AND MERIDIAN, BEING FURTHER DESCRIBED AS FOLLOWS, WITH A BEARING OF NORTH 0° 32' 20" WEST, BETWEEN THE EAST QUARTER CORNER AND THE NORTHEAST CORNER OF SAID SECTION 1 USED AS THE BASIS OF BEARING.

BEGINNING AT A POINT WHICH IS LOCATED SOUTH 89° 31' 47" WEST, 2892.87 FEET ALONG THE CENTER OF SECTION LINE AND SOUTH 0° 28' 13" EAST, 262.16 FEET FROM THE EAST QUARTER CORNER OF SECTION 1, TOWNSHIP 14 SOUTH, RANGE 9 EAST, SALT LAKE BASE AND MERIDIAN, BEING A 3" BRASS CAP EMBEDDED IN A CONCRETE CYLINDER; AND RUNNING THENCE SOUTH 63° 03' 56" WEST, 391.48 FEET TO THE LOWER EDGE OF AN EXISTING LEDGE LINE; THENCE ALONG THE LOWER EDGE OF EXISTING LEDGE LINE THE COURSES AND DISTANCES TO: WIT; THENCE NORTH 9° 43' 01" WEST, 48.86 FEET; THENCE NORTH 14° 36' 29" WEST, 123.15 FEET; THENCE NORTH 3° 07' 06" WEST, 134.66 FEET; THENCE NORTH 15° 36' 08" WEST, 149.08 FEET; THENCE NORTH 20° 37' 08" WEST, 89.27 FEET; THENCE NORTH 33° 08' 31" WEST, 50.83 FEET; THENCE NORTH 58° 53' 10" WEST, 27.45 FEET; THENCE NORTH 12° 32' 27" EAST, 36.42 FEET; THENCE NORTH 64° 36' 24" WEST, 89.05 FEET; THENCE NORTH 5° 13' 05" WEST, 28.72 FEET; THENCE NORTH 6° 22' 50" WEST, 58.46 FEET; THENCE NORTH 20° 31' 29" WEST, 105.95 FEET; THENCE NORTH 57° 52' 59" WEST, 6.14 FEET; THENCE NORTH 23° 07' 06" EAST, 108.39 FEET TO A POINT ON THE SOUTHWESTERLY RIGHT-OF-WAY LINE OF A COUNTY ROAD; THENCE ALONG THE WESTERLY RIGHT-OF-WAY LINE OF A COUNTY ROAD THE FOLLOWING COURSES; THENCE SOUTH 70° 47' 07" EAST, 157.19 FEET; THENCE ALONG A CURVE TO THE RIGHT WITH A RADIUS OF 275.00 FEET, THROUGH AN ANGLE OF 43° 51' 03", FOR A DISTANCE OF 210.47 FEET, HAVING A CHORD THAT BEARS SOUTH 48° 51' 36" EAST, 205.37 FEET; THENCE SOUTH 26° 56' 04" EAST, 654.99 FEET TO THE POINT OF BEGINNING.

CONTAINS 5.972 ACRES, MORE OR LESS.

DATE SEP 23, 1995 Evan E. Hansen
 EVAN E. HANSEN



OWNER'S DEDICATION

KNOW ALL MEN BY THESE PRESENTS THAT _____ THE _____ UNDERSIGNED OWNER() OF THE ABOVE DESCRIBED TRACT OF LAND, HAVING CAUSED SAME TO BE SUBDIVIDED INTO LOTS AND STREETS TO HEREAFTER BE KNOWN AS THE

PHASE I - BROKEN MESA SUBDIVISION

DO HEREBY DEDICATE FOR PERPETUAL USE OF THE PUBLIC ALL PARCELS OF LAND SHOWN ON THIS PLAT AS INTENDED FOR PUBLIC USE.
 IN WITNESS WHEREBY _____ HAVE HEREUNTO SET _____ THIS
2nd DAY OF October A.D. 19 95

Boyd Marshing
 GENERAL PARTNER OF
BOYD L. MARSHING FAMILY
 PARTNERSHIP

ACKNOWLEDGMENT

STATE OF UTAH
 County of Carbon S.S.
 ON THE 2nd DAY OF October A.D. 19 95, PERSONALLY APPEARED BEFORE ME, THE UNDERSIGNED NOTARY PUBLIC, IN AND FOR SAID COUNTY OF Carbon IN SAID STATE OF UTAH, THE SIGNER() OF THE ABOVE OWNER'S DEDICATION, IN NUMBER, WHO DULY ACKNOWLEDGED TO ME THAT Boyd Marshing SIGNED IT FREELY AND VOLUNTARILY AND FOR THE USES AND PURPOSES THEREIN MENTIONED.

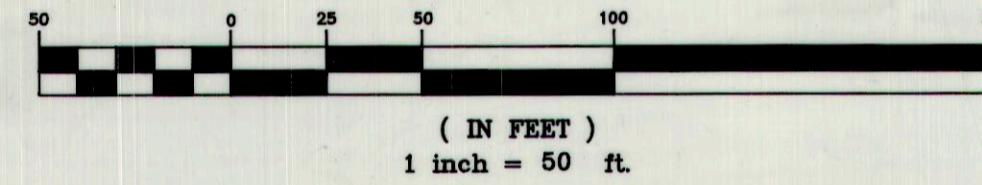
MY COMMISSION EXPIRES 11-16-95 Evan E. Hansen
 NOTARY PUBLIC
 RESIDING IN Carbon COUNTY

SE1/4 NW1/4 & NE1/4 SW1/4 SEC. 1, T 14 S, R 9 E, S.L.B. & M.

A CURVE DATA
 Δ = 16°55'00"
 R = 275.00'
 T = 40.89'
 L = 81.19'

B CURVE DATA
 Δ = 26°56'03"
 R = 275.00'
 T = 65.86'
 L = 129.28'

GRAPHIC SCALE

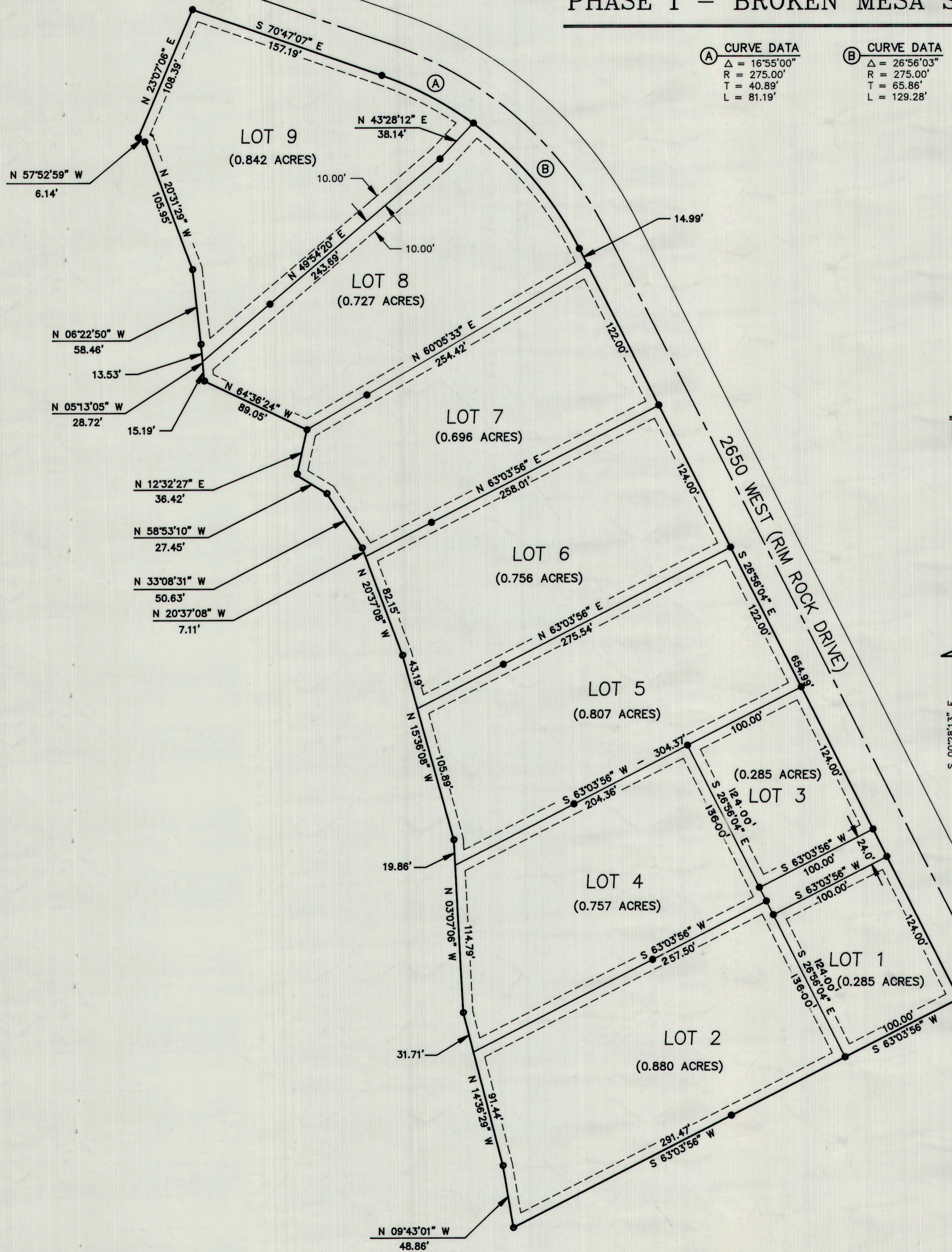


EAST 1/4 CORNER SECTION 1
 T 14 S, R 9 E,
 S.L.B. & M.
 S 89°31'47" W
 2892.87'

LEGEND

- 7.5' UTILITY & DRAINAGE EASEMENT
- PROPERTY LINES
- SECTION CORNER
- 5/8" x 24" REBAR SET W/ CAP

NOTE:
 MARKERS WILL BE SET APPROXIMATELY
 200' FEET FROM FRONT LOT LINE.



C: VEMPIRE\MARSHING 06/17/95 14:42

P.R.W.I.D APPROVED THIS <u>26th</u> DAY OF <u>September</u> A.D. 19 <u>95</u> BY THE COUNTY PLANNING COMMISSION. <u>Shirley Johnson</u> DISTRICT MANAGER	PLANNING COMMISSION APPROVED THIS <u>2nd</u> DAY OF <u>October</u> A.D. 19 <u>95</u> BY THE COUNTY PLANNING COMMISSION. <u>Rudolf J. Bink</u> CHAIRMAN, COUNTY PLANNING COMM.	SOUTHEASTERN UTAH DISTRICT HEALTH DEPARTMENT APPROVED THIS <u>2nd</u> DAY OF <u>October</u> A.D. 19 <u>95</u> <u>Marion S. Bink</u> DIRECTOR, COUNTY BOARD OF HEALTH	SURVEYOR'S CERTIFICATE I, HEREBY CERTIFY THAT THIS OFFICE HAS EXAMINED THIS PLAT AND IT IS CORRECT IN ACCORDANCE WITH INFORMATION ON FILE IN THIS OFFICE. DATE <u>SEP 23, 1995</u> <u>Evan E. Hansen</u> ASST. COUNTY SURVEYOR	APPROVAL AS TO FORM APPROVED THIS <u>21st</u> DAY OF <u>September</u> A.D. 19 <u>95</u> <u>Robert B. Smith</u> COUNTY ATTORNEY	COUNTY COMMISSION PRESENTED TO THE BOARD OF COUNTY COMMISSIONERS THIS <u>2nd</u> DAY OF <u>October</u> A.D. 19 <u>95</u> , AT WHICH TIME THIS SUBDIVISION WAS APPROVED AND ACCEPTED. <u>Robert B. Smith</u> COUNTY CLERK	RECORDED #51886 STATE OF UTAH, COUNTY OF <u>CARBON</u> RECORDED AND FILED AT THE REQUEST OF <u>Boyd L. Marshing</u> DATE <u>10/19/95</u> TIME <u>16:06 PM</u> BOOK <u>5-Plats</u> PAGE <u>13</u> FEE \$ <u>38.00</u> <u>Ann B. O'Brien</u> COUNTY RECORDER
-----------------------------------------------------------------------------------------------------------------------------------------------------------------------------	--------------------------------------------------------------------------------------------------------------------------------------------------------------------------------------------------	--------------------------------------------------------------------------------------------------------------------------------------------------------------------------------------	------------------------------------------------------------------------------------------------------------------------------------------------------------------------------------------------------------------------------------------------	------------------------------------------------------------------------------------------------------------------------------------------------	------------------------------------------------------------------------------------------------------------------------------------------------------------------------------------------------------------------------------------------	-------------------------------------------------------------------------------------------------------------------------------------------------------------------------------------------------------------------------------------------------------------------------------------