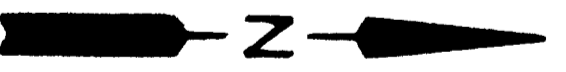
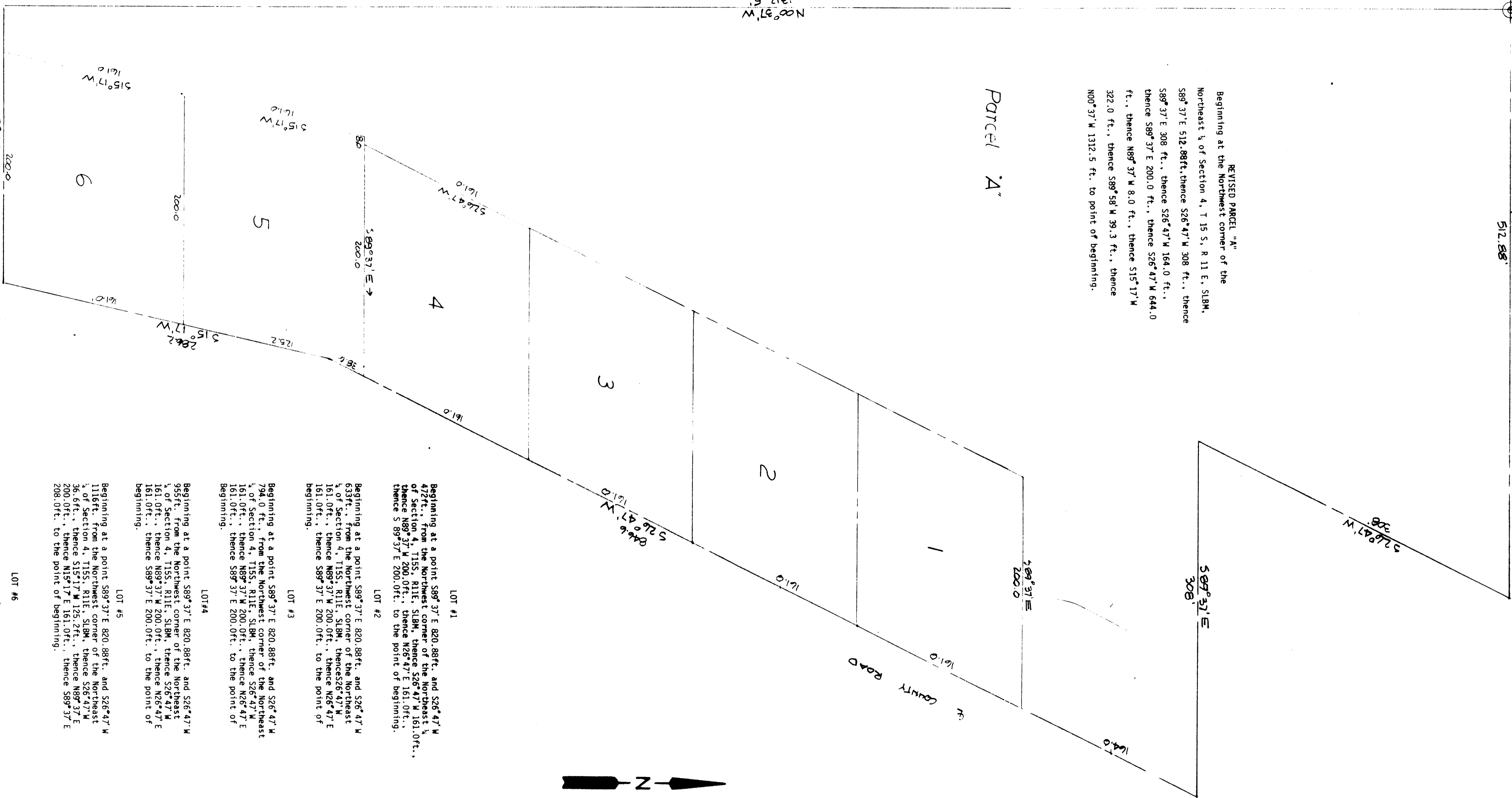


ORIGINAL DESCRIPTION OF PARCEL "A"
 Beginning at the Northwest Corner of the Northeast 1/4 of Section 4 T15S, R11E, S18M, thence S89°37'E 512.88ft., thence S26°47'W 108ft., thence S89°37'E 308ft., thence S26°47'W 604.5ft., thence S 15°17'W 286.2ft., thence S89°58'W 239.3ft., thence N00°37'W 1312.5ft. to the point of beginning.

REVISED PARCEL "A"
 Beginning at the Northwest corner of the Northeast 1/4 of Section 4, T 15 S, R 11 E, S18M, S89°37'E 512.88ft., thence S26°47'W 308 ft., thence S89°37'E 308 ft., thence S26°47'W 164.0 ft., thence S89°37'E 200.0 ft., thence S26°47'W 644.0 ft., thence N89°37'W 8.0 ft., thence S15°17'W 322.0 ft., thence S89°58'W 39.3 ft., thence N00°37'W 1312.5 ft. to point of beginning.

T15S R11E
 4

33
 589°37'E
 512.88



LOT #1
 Beginning at a point S89°37'E 820.88ft., and S26°47'W 474.0 ft. from the Northwest corner of the Northeast 1/4 of Section 4, T15S, R11E, S18M, thence S26°47'W 161.0ft., thence N89°37'W 200.0ft., thence S 89°37'E 200.0ft. to the point of beginning.

LOT #2
 Beginning at a point S89°37'E 820.88ft., and S26°47'W 633ft., from the Northwest corner of the Northeast 1/4 of Section 4, T15S, R11E, S18M, thence S26°47'W 161.0ft., thence N89°37'W 200.0ft., thence N26°47'E 161.0ft., thence S89°37'E 200.0ft. to the point of beginning.

LOT #3
 Beginning at a point S89°37'E 820.88ft., and S26°47'W 794.0 ft., from the Northwest corner of the Northeast 1/4 of Section 4, T15S, R11E, S18M, thence S26°47'W 161.0ft., thence N89°37'W 200.0ft., thence N26°47'E 161.0ft., thence S89°37'E 200.0ft. to the point of beginning.

LOT #4
 Beginning at a point S89°37'E 820.88ft., and S26°47'W 953ft., from the Northwest corner of the Northeast 1/4 of Section 4, T15S, R11E, S18M, thence S26°47'W 161.0ft., thence N89°37'W 200.0ft., thence N26°47'E 161.0ft., thence S89°37'E 200.0ft. to the point of beginning.

LOT #5
 Beginning at a point S89°37'E 820.88ft., and S26°47'W 1116ft., from the Northwest corner of the Northeast 1/4 of Section 4, T15S, R11E, S18M, thence S26°47'W 36.6ft., thence S15°17'W 125.2ft., thence N89°37'E 200.0ft., thence N15°17'E 161.0ft., thence S89°37'E 200.0ft. to the point of beginning.

LOT #6
 Beginning at a point S00°37'W 1312.5ft., and N89°58'E 39.3ft., from the Northwest corner of the Northeast 1/4 of Section 4, T15S, R11E, S18M, thence N15°17'E 161.0 ft., thence S15°17'W 200.0ft., thence S15°17'W 161.0ft., thence N89°58'W 200.0ft. to the point of beginning.

A. Leonard Lloyd
 CHIEF OF PLANNING

BUTLER
 4, 15-11

4-15-11
 BUTLER

DIVISION FOR BOB & BILL BUTLER
 WELLINGTON, UTAH

SCALE: 1"=50'