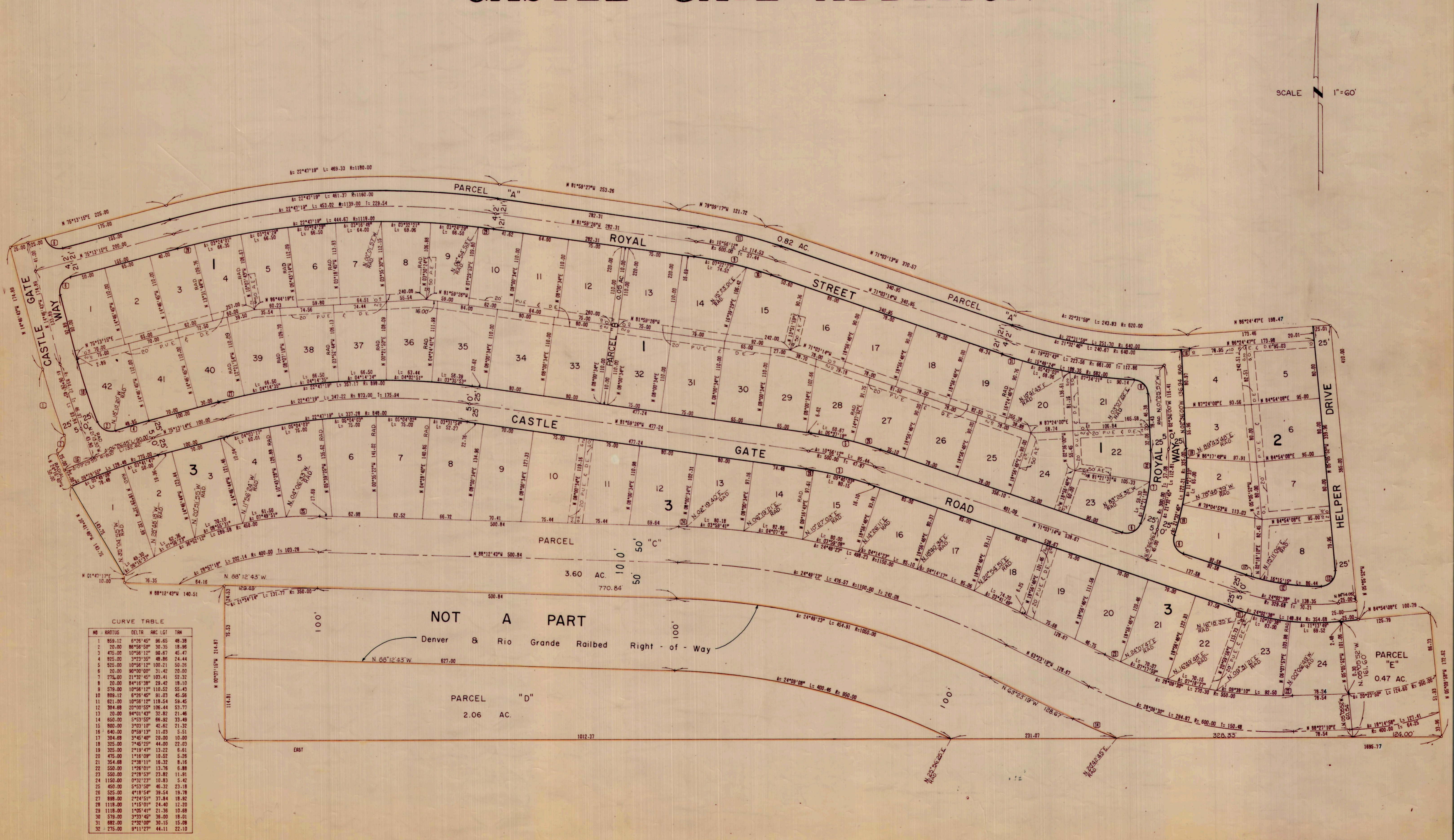


Entry No. 13157  
 Indexed  
 Abstracted  
 Res. Fee \$42.00

STATE OF UTAH  
 COUNTY OF CARBON } SS  
 FILED AND RECORDED FOR  
 TRICO UTAH, INC.  
 JUN 17 4 27 PM '74  
 BOOK 3 OF PLATS  
 PAGE 731  
 ANN O'BRIEN  
 COUNTY RECORDER

# CASTLE GATE ADDITION

SCALE 1"=60'



CURVE TABLE

NO	RADIUS	DELTA	ARC	LG	TAN
1	859.12	6°26'45"	96.65	48.38	
2	20.00	86°58'50"	30.35	18.96	
3	476.00	10°58'12"	96.67	48.47	
4	925.00	3°23'55"	48.86	24.44	
5	525.00	10°58'12"	100.21	50.26	
6	20.00	86°00'00"	31.42	20.00	
7	276.00	21°32'45"	103.41	52.32	
8	20.00	84°18'38"	29.42	18.10	
9	579.00	10°58'12"	110.52	55.43	
10	809.12	6°28'45"	81.03	45.56	
11	621.00	10°58'12"	118.54	59.45	
12	394.68	21°00'55"	106.44	53.77	
13	20.00	94°01'43"	32.82	21.46	
14	650.00	5°53'55"	66.82	33.49	
15	800.00	3°03'10"	42.82	21.32	
16	640.00	0°58'11"	11.03	5.51	
17	304.68	3°45'40"	20.00	10.00	
18	325.00	7°45'25"	44.00	22.03	
19	325.00	2°19'47"	13.22	6.61	
20	475.00	1°18'00"	10.52	5.26	
21	354.68	2°38'11"	16.32	8.16	
22	550.00	1°28'01"	13.78	6.88	
23	550.00	2°28'53"	23.82	11.91	
24	1150.00	0°52'03"	10.83	5.42	
25	450.00	5°53'50"	46.32	23.18	
26	525.00	4°18'54"	39.54	19.78	
27	888.00	2°24'51"	37.84	19.32	
28	1118.00	1°05'41"	21.36	10.68	
29	579.00	3°33'45"	36.00	18.01	
30	682.00	2°32'00"	30.15	15.08	
31	275.00	9°11'22"	44.11	22.10	