

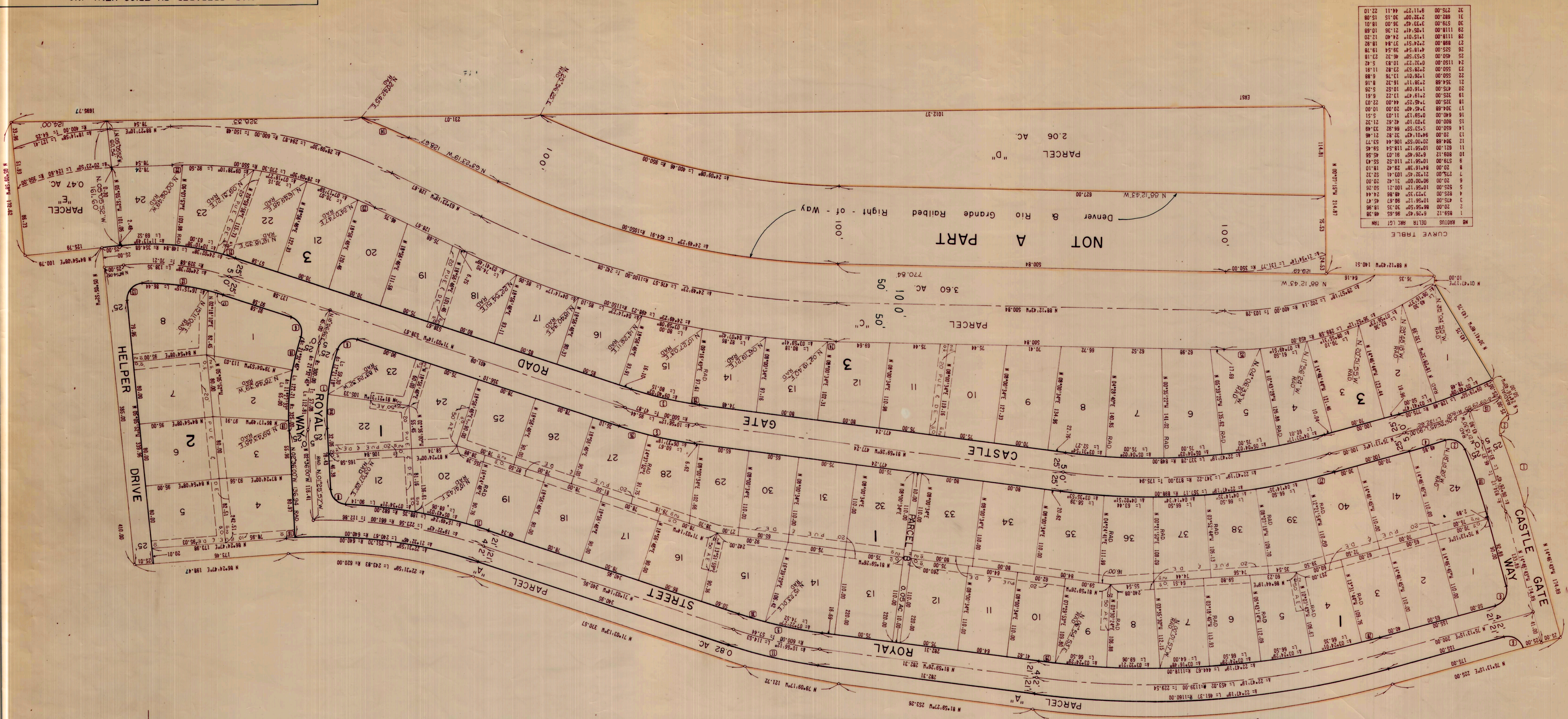
# CASTLE GATE ADDITION

SHEET 2 OF 2 SHEETS

STATE OF UTAH }  
 COUNTY OF CARBON }  
 TRICO UTAH, INC.  
 JUN 17 4 27 PM '74  
 BOOK 3 OF LOTS  
 PAGE 371  
 COUNTY RECORDER

13157  
 73.00  
 13157

SCALE 1"=60'



CURVE TABLE

NO	RADIUS	DELTA	ARC	CHORD
1	1859.12	6.28	98.65	48.38
2	20.00	6.28	98.65	48.38
3	1859.12	6.28	98.65	48.38
4	20.00	6.28	98.65	48.38
5	1859.12	6.28	98.65	48.38
6	20.00	6.28	98.65	48.38
7	1859.12	6.28	98.65	48.38
8	20.00	6.28	98.65	48.38
9	1859.12	6.28	98.65	48.38
10	20.00	6.28	98.65	48.38
11	1859.12	6.28	98.65	48.38
12	20.00	6.28	98.65	48.38
13	1859.12	6.28	98.65	48.38
14	20.00	6.28	98.65	48.38
15	1859.12	6.28	98.65	48.38
16	20.00	6.28	98.65	48.38
17	1859.12	6.28	98.65	48.38
18	20.00	6.28	98.65	48.38
19	1859.12	6.28	98.65	48.38
20	20.00	6.28	98.65	48.38
21	1859.12	6.28	98.65	48.38
22	20.00	6.28	98.65	48.38
23	1859.12	6.28	98.65	48.38
24	20.00	6.28	98.65	48.38
25	1859.12	6.28	98.65	48.38
26	20.00	6.28	98.65	48.38
27	1859.12	6.28	98.65	48.38
28	20.00	6.28	98.65	48.38
29	1859.12	6.28	98.65	48.38
30	20.00	6.28	98.65	48.38
31	1859.12	6.28	98.65	48.38
32	20.00	6.28	98.65	48.38
33	1859.12	6.28	98.65	48.38
34	20.00	6.28	98.65	48.38
35	1859.12	6.28	98.65	48.38
36	20.00	6.28	98.65	48.38
37	1859.12	6.28	98.65	48.38
38	20.00	6.28	98.65	48.38
39	1859.12	6.28	98.65	48.38
40	20.00	6.28	98.65	48.38
41	1859.12	6.28	98.65	48.38
42	20.00	6.28	98.65	48.38