

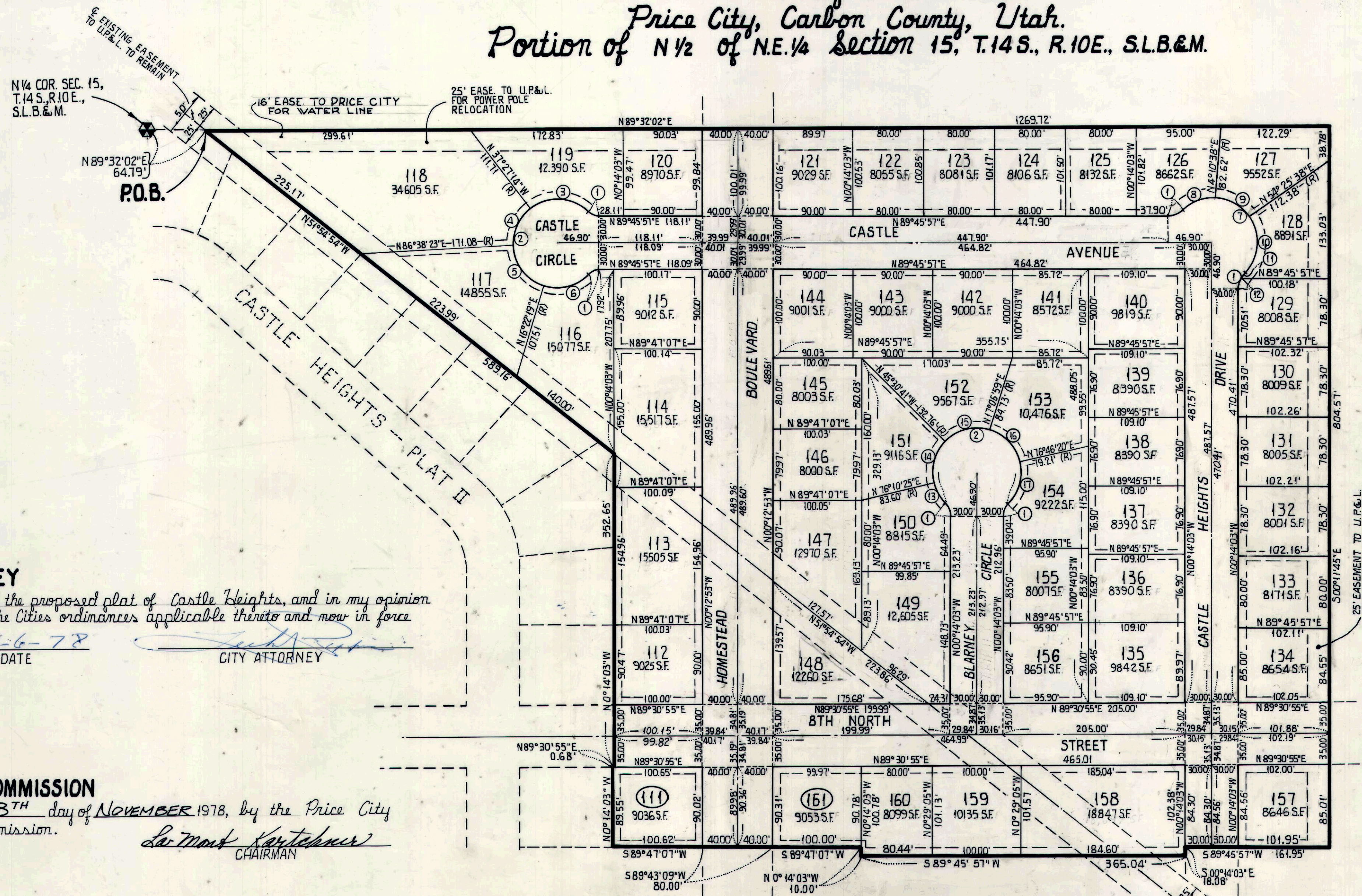
# Castle Heights Plat III

## Price City, Carbon County, Utah.

### Portion of N½ of NE¼ Section 15, T.14S., R.10E., S.L.B.&M.

Survey No. 147433  
 Indexed ✓  
 Abstracted ✓  
 Rec. Fee \$35.50

STATE OF UTAH  
 COUNTY OF CARBON  
 GULL ASSOCIATES, LTD.  
 Nov 20 9 22 AM '78  
 BOOK 3 OF PLATS  
 PAGE 182  
 ANK O'BRIEN  
 COUNTY RECORDER



#### CITY ATTORNEY

I have examined the proposed plat of Castle Heights, and in my opinion it conforms with the City ordinances applicable thereto and now in force and effect.  
 DATE 11-6-78 CITY ATTORNEY [Signature]

#### PLANNING COMMISSION

Approved this 8<sup>th</sup> day of NOVEMBER 1978, by the Price City Planning Commission.  
[Signature] CHAIRMAN

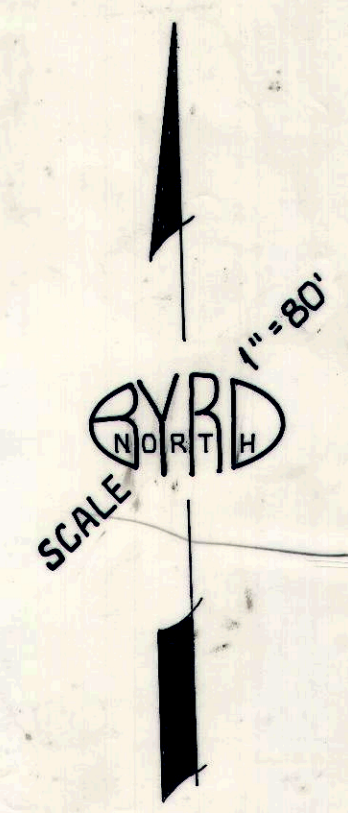
#### CITY COUNCIL

Presented to the City Council of Price, Utah, this 8 day of November 1978 at which time this subdivision was approved and accepted.  
 ATTEST: [Signature] CITY RECORDER  
[Signature] MAYOR

#### CITY ENGINEER

Approved this 8<sup>th</sup> day of November 1978.  
[Signature] PRICE CITY ENGINEER

CURVE DATA				
NO.	DELTA	RADIUS	LENGTH	TANGENT
1	46° 11' 13"	15.00'	12.09'	6.40'
2	272° 22' 26"	50.00'	231.69'	—
3	83° 24' 24"	"	72.79'	44.59'
4	55° 54' 23"	"	48.79'	26.53'
5	70° 16' 04"	"	61.32'	35.18'
6	62° 47' 35"	"	54.80'	30.52'
7	182° 22' 26"	50.00'	159.15'	—
8	50° 35' 54"	"	44.16'	23.63'
9	50° 15' 00"	"	43.85'	23.45'
10	81° 31' 32"	"	71.14'	43.10'
11	14° 52' 33"	15.00'	3.89'	1.96'
12	31° 18' 40"	"	8.20'	4.20'
13	32° 35' 41"	50.00'	28.44'	14.62'
14	58° 18' 54"	"	50.89'	27.90'
15	62° 37' 40"	"	54.65'	30.42'
16	59° 39' 21"	"	52.06'	28.67'
17	59° 10' 50"	"	51.64'	28.39'



UTILITY & LAND DRAINAGE EASEMENTS  
 (1). 8' EASEMENT ON ALL FRONT LOT LINES.  
 (2). 7' EASEMENT ON ALL REAR LOT LINES.  
 (3). 5' EASEMENTS ON SIDE LOTS, AS SHOWN

#### OWNER'S DEDICATION

Know all men by these presents that we the undersigned owners of the herewith described tract of land, having caused the same to be subdivided into lots and streets to hereafter be known as Castle Heights Plat III, do hereby dedicate to Price City for perpetual use of the public all parcels of land shown on this plat as intended for public use, and do warrant, defend, and save the City harmless against any easements or other encumbrances on the dedicated streets which will interfere with the City's use, operation and maintenance of the streets and do further dedicate the easements as shown. In witness whereof we have hereunto set our hands this 31 day of Aug 1978.

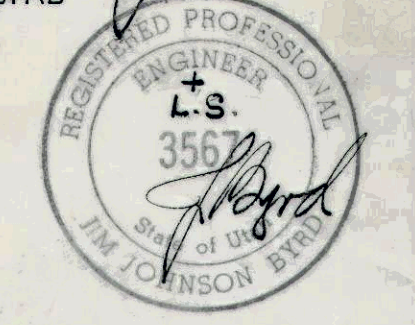
GULL ASSOCIATES LTD.  
 PRESIDENT [Signature] SECRETARY [Signature]

#### ACKNOWLEDGEMENT

STATE OF UTAH  
 COUNTY OF Carbon  
 On this 31 day of August 1978, personally appeared before me Sec H. Hunt and Ray Louder who after being duly sworn, did say that they are the President and Secretary of Gull Associates, Ltd a Utah Corp., and signed the Owners Dedication on behalf of said Corp. by authority of a resolution from its executive committee dated 31 August 1978 and acknowledged that they executed the same.  
[Signature] NOTARY PUBLIC  
[Signature] RESIDENCE [Address] COMMISSION EXPIRES [Date]

#### SURVEYOR'S CERTIFICATE

I, Jim J. Byrd, a Registered Professional Engineer and Land Surveyor, holding Certificate No. 3567, as prescribed by the State of Utah, do hereby certify that by authority of the owners I have made a survey of the tract of land shown on this plat and described herewith, and have subdivided said tract of land into lots and streets to be known as Castle Heights, Plat III and that the same has been surveyed and will be staked on the ground as shown on this plat.  
 Signed on this 31 day of Aug 1978.  
[Signature] JIM J. BYRD



#### BOUNDARY DESCRIPTION

Beginning at a point on the Section Line, said point being N89°32'02"E 64.79 feet from the N¼ Corner of Section 15, T.14S., R.10E., S.L.B.&M. and running thence N89°32'02"E 1269.72 feet along the Section Line to the 40 Acre Line; thence S00°11'45"E 804.51 feet along said 40 Acre Line; thence S89°45'57"W 161.95 feet; thence S50°14'03"E 18.08 feet; thence S89°45'57"W 365.04 feet; thence N00°14'03"W 10.00 feet; thence S89°47'07"W 100.00 feet; thence S89°43'09"W 80.00 feet; thence S89°47'07"W 100.62 feet to a point on the East Line of Castle Heights Plat II a recorded subdivision; thence along said Easterly Boundary the following courses, N00°14'03"W 89.55 feet, and N89°30'55"E 0.68 feet, and N00°14'03"W 352.65 feet, and N51°54'54"W 589.16 feet to the point of beginning.  
 CONTAINS 17.03 ACRES.

**BYRD ENGINEERING**  
 ENGINEERS • SURVEYORS • PLANNERS  
 BOUNTIFUL, UTAH 84010 PHONE (801) 292-5231

RECORDED NO. 147433  
 STATE OF UTAH, COUNTY OF CARBON  
 RECORDED AND FILED AT THE REQUEST OF  
GULL ASSOCIATES, LTD.  
 DATE: 11/20/78 TIME: 7:22 A.M. BOOK: 3 PAGE: 182  
 FEE: 35.50  
[Signature]  
 CARBON COUNTY RECORDER