

CASTLEVIEW PROFESSIONAL BUILDING #3

CASTLEVIEW HOSPITAL
PRICE, UTAH 84501

COMMON AREA DESIGNATION

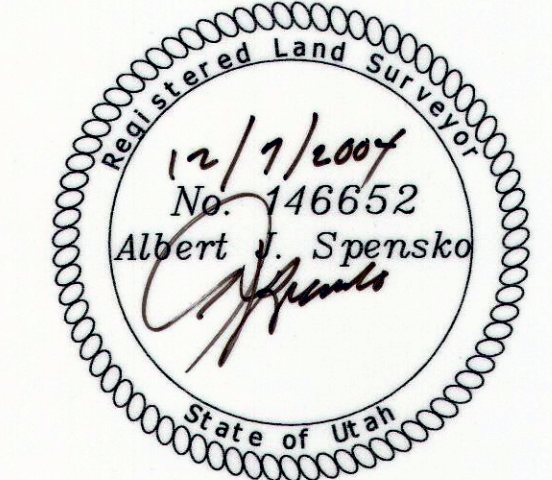
DECLARATION OF CONDOMINIUM ACCORDING TO STATE STATUES,
UTAH CODE 57-8-13 (2004), CONDOMINIUM OWNERSHIP ACT.

TOWNSHIP 14 SOUTH

ENGINEER'S CERTIFICATE

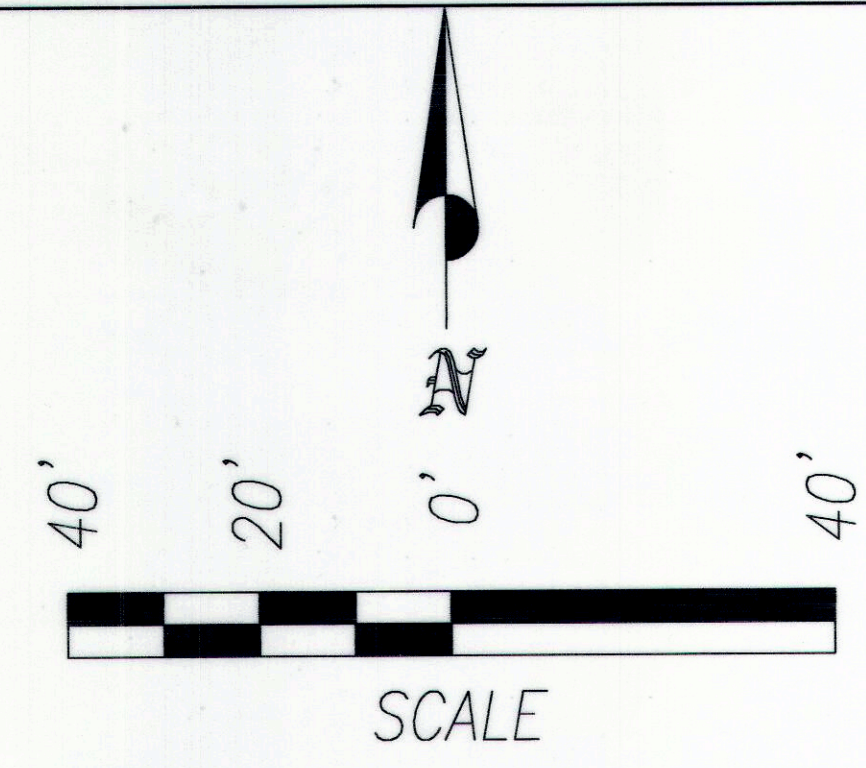
I, Albert J. Spensko, a Registered Professional Land Surveyor, holding Certificate 146652 State of Utah, do hereby certify that the information on this drawing is a true and accurate survey based on data of record and was conducted under my personal direction and supervision as shown hereon.

Albert J. Spensko 12/7/2004
Albert J. Spensko Date



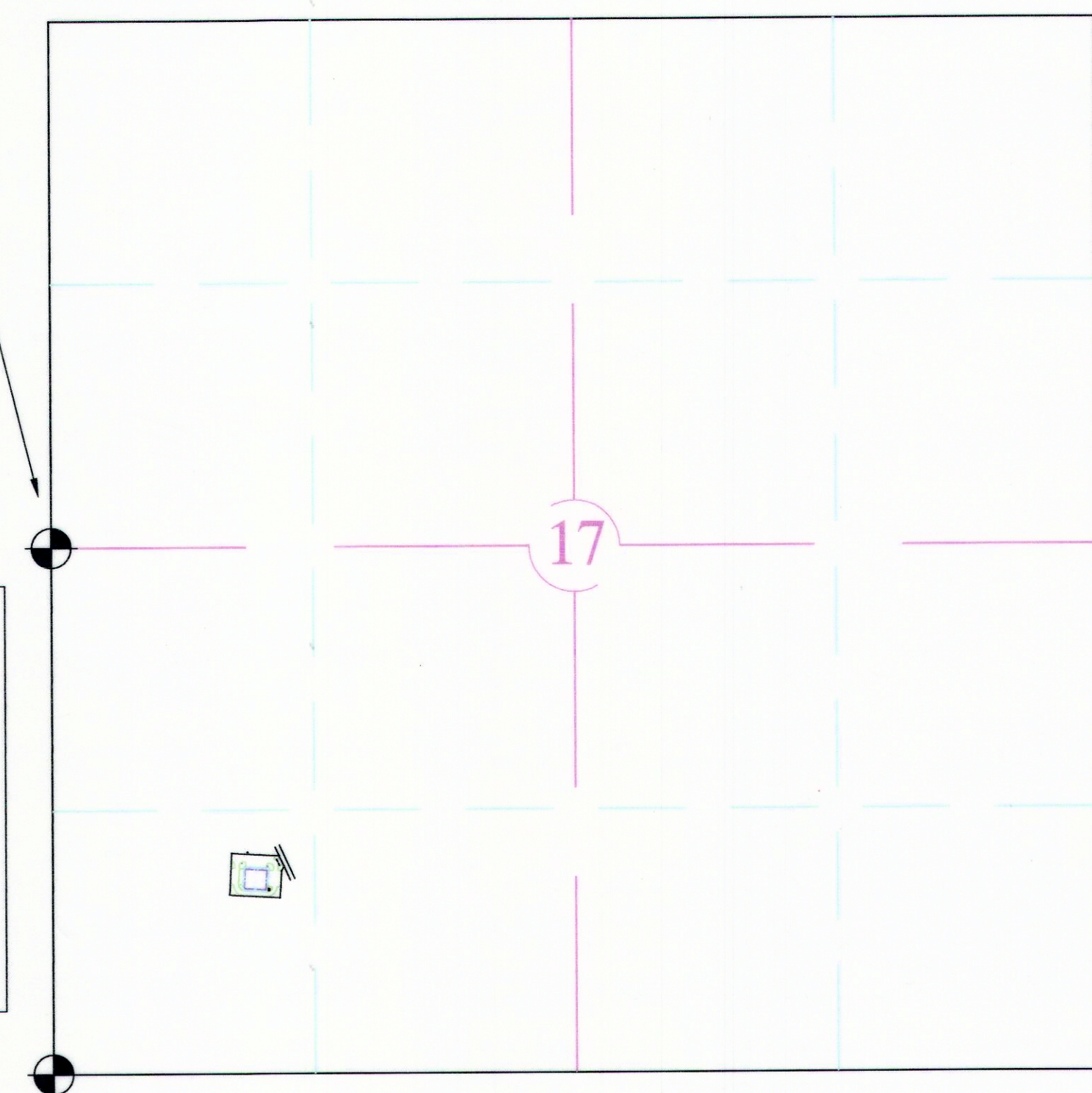
DESCRIPTION

BEGINNING AT A POINT 1528.98' SOUTH AND 699.49' EAST OF THE WEST QUARTER CORNER OF SECTION 17, T14S, R10E, S.L.B.&M., THENCE RUNNING S02°57'13"W, 209.28'; THENCE S86°28'26"E, 254.37'; THENCE N03°29'46"E, 134.64'; THENCE N28°51'01"E, 26.63' MORE OR LESS TO THE WEST BOUNDARY LINE OF HOSPITAL DRIVE; THENCE N24°53'14"W, 57.15' ALONG SAID WEST LINE OF HOSPITAL DRIVE; THENCE N86°24'05"W, 240.59'; MORE OR LESS TO THE POINT OF BEGINNING.

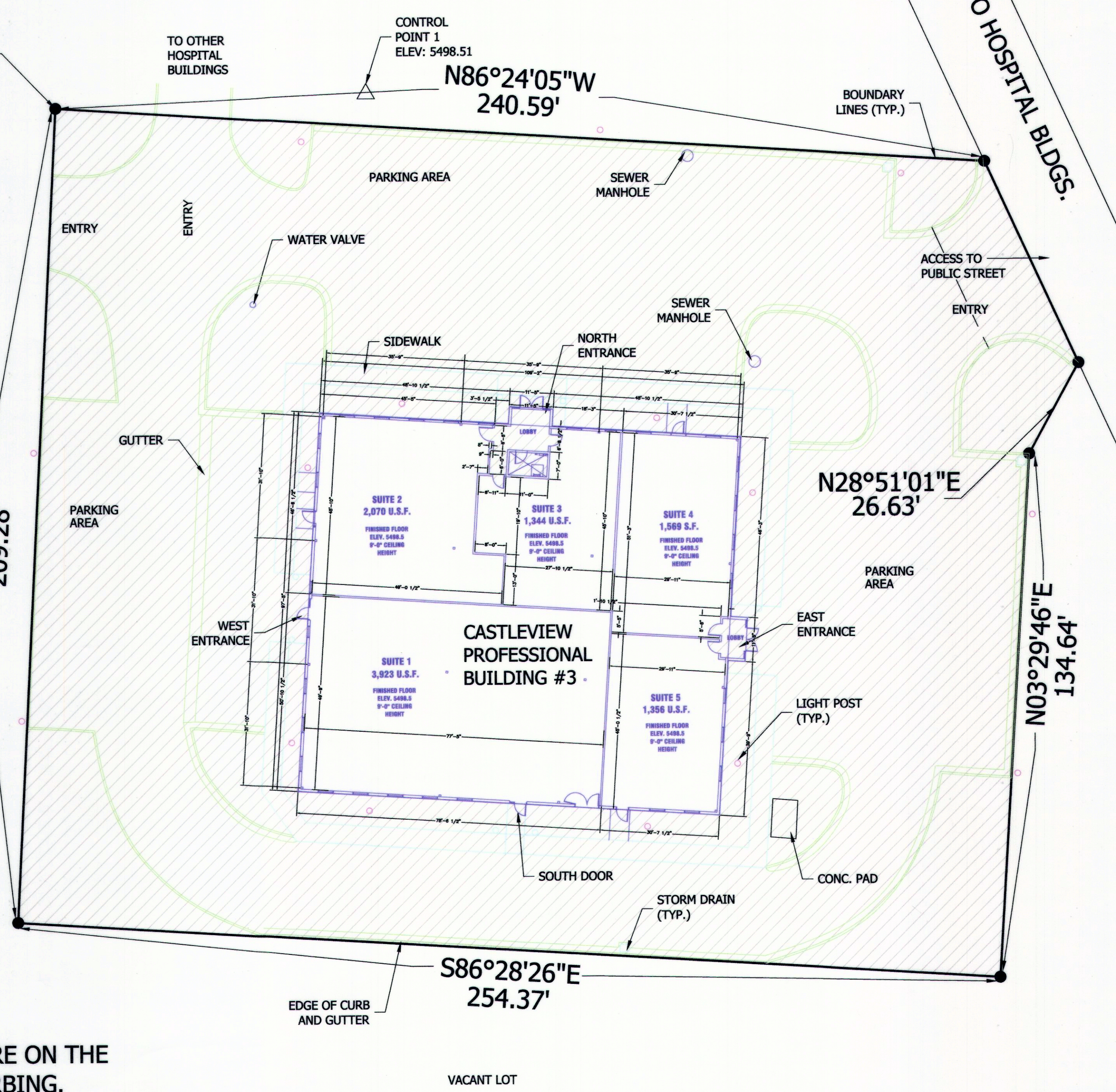


West Quarter Corner
Section 17
T14S, R10E, S.L.B.&M.
Carbon County, Utah

RANGE 10 EAST
BASIS OF BEARING
N04°23'00"E - 2644.17'



P.O.B.
S=1528.98'
E=699.49'



HOSPITAL DRIVE
TO PRICE CITY

SECTION LINE	—
1/4 SECTION LINE	—
40 ACRE LINE	—
SECTION CORNER (Found)	⊙
GPS BEARING & DIST.	N00°00'00"W
COMMON AREA	▨

Talon Resources, Inc.
195 North, 100 West
P.O. Box 1230
Huntington, Utah 84528
Phone (435)687-5310
Fax (435)687-5311

ALL LINES ARE ON THE
BACK OF CURBING.

--	--	--	--	--

RECORDED NO. 17

STATE OF UTAH, COUNTY OF CARBON
RECORDED AND FILED AT THE REQUEST OF
Castleview Hospital

DATE: 1-6-05 TIME: 2:42 BOOK: 5 PAGE: 89 FEE: 64.00
Sharon M. Mudeck
CARBON COUNTY RECORDER Date

DRAWN BY:	DATE:
N. BUTKOVICH	01/05/05
CHECKED BY:	SCALE:
LWJ / AJS	1" = 20'
JOB NUMBER:	SHEET
1457	2 OF 2

CASTLEVIEW PROF. BLDG. #3
 20F2