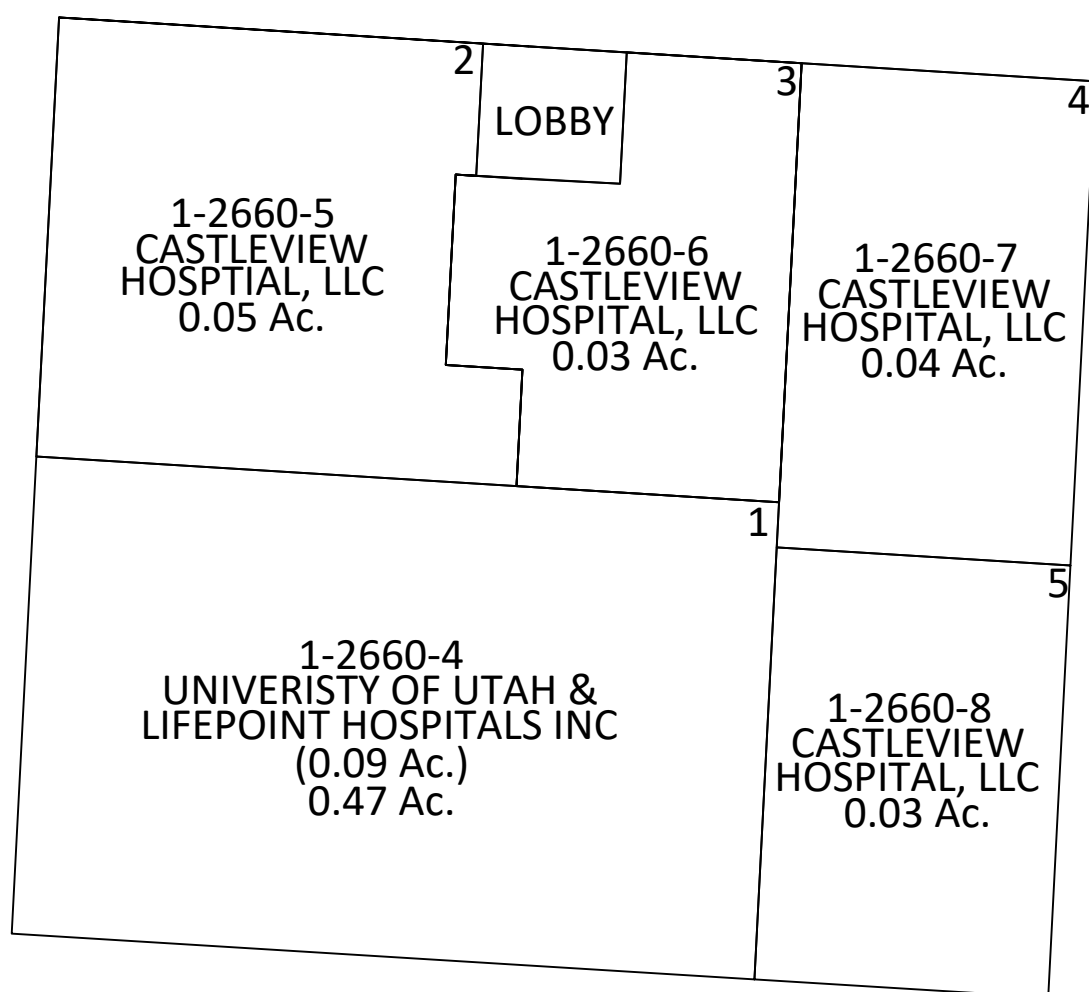


PART OF SECTION 17, T14S, R10E

# CARBON COUNTY PLATS

CASTLEVIEW PROFESSIONAL BUILDING #3 SUBDIVISION

1-2660-1  
CASTLEVIEW  
HOSPITAL, LLC



1-2660-5  
CASTLEVIEW  
HOSPITAL, LLC  
0.05 Ac.

LOBBY

1-2660-6  
CASTLEVIEW  
HOSPITAL, LLC  
0.03 Ac.

1-2660-7  
CASTLEVIEW  
HOSPITAL, LLC  
0.04 Ac.

1-2660-4  
UNIVERISTY OF UTAH &  
LIFEPOINT HOSPITALS INC  
(0.09 Ac.)  
0.47 Ac.

1-2660-8  
CASTLEVIEW  
HOSPITAL, LLC  
0.03 Ac.

SCALE: 20 FEET = 1 INCH  
OCTOBER 4, 2023

Carbon County assumes no liability for errors or omissions in any information.