

CITY CEMETARY HELPER UTAH

MT. VIEW CEMETARY

Location in NE 1/4 NW 1/4, SEC. 19, TWP. 13 S, R. 10 E.
S.L.B.M.

OWNER'S DEDICATION

Helper City here in dedicates and files this map as the official past and present cemetery layout plan, and has on record ownership files in accordance with this plan, and in more recent years the names of the deceased people buried. This is done by authority of the Helper City Council

Chris P. Joffles
Chris P Joffles
Mayor of Helper City

Scale: 1" = 20'
February 1971

Note:

Cemetery officially established April 1912.

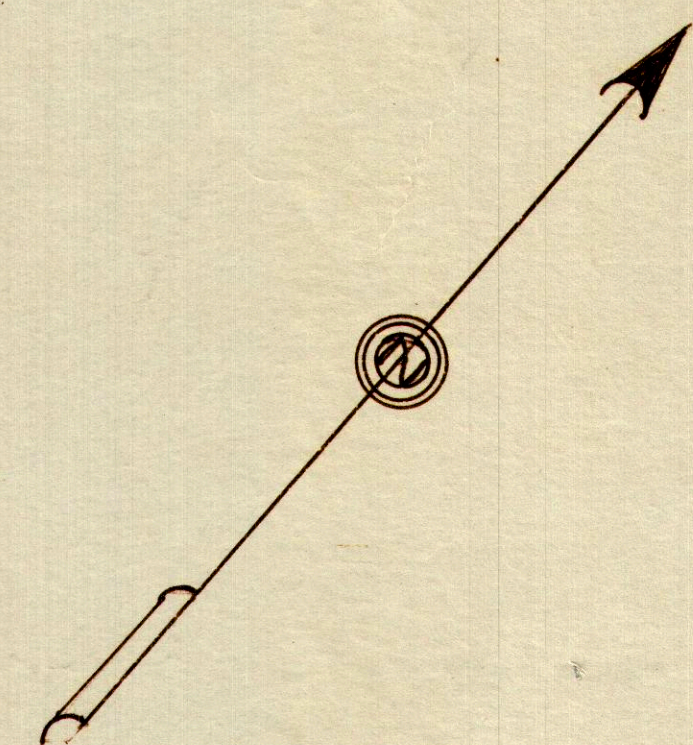
Dead recorded Book 5B, Page 232; correction Dead Book 5N, Page 271; all in the office of the Carbon County Recorder Price, Utah.

Map compiled from old notes, maps, burial records etc., by John Bane, C.E. Utah 1050., City Engineer, Helper City
Burial records and ownership records on file at the office of the Helper City Recorder, Helper, Utah.

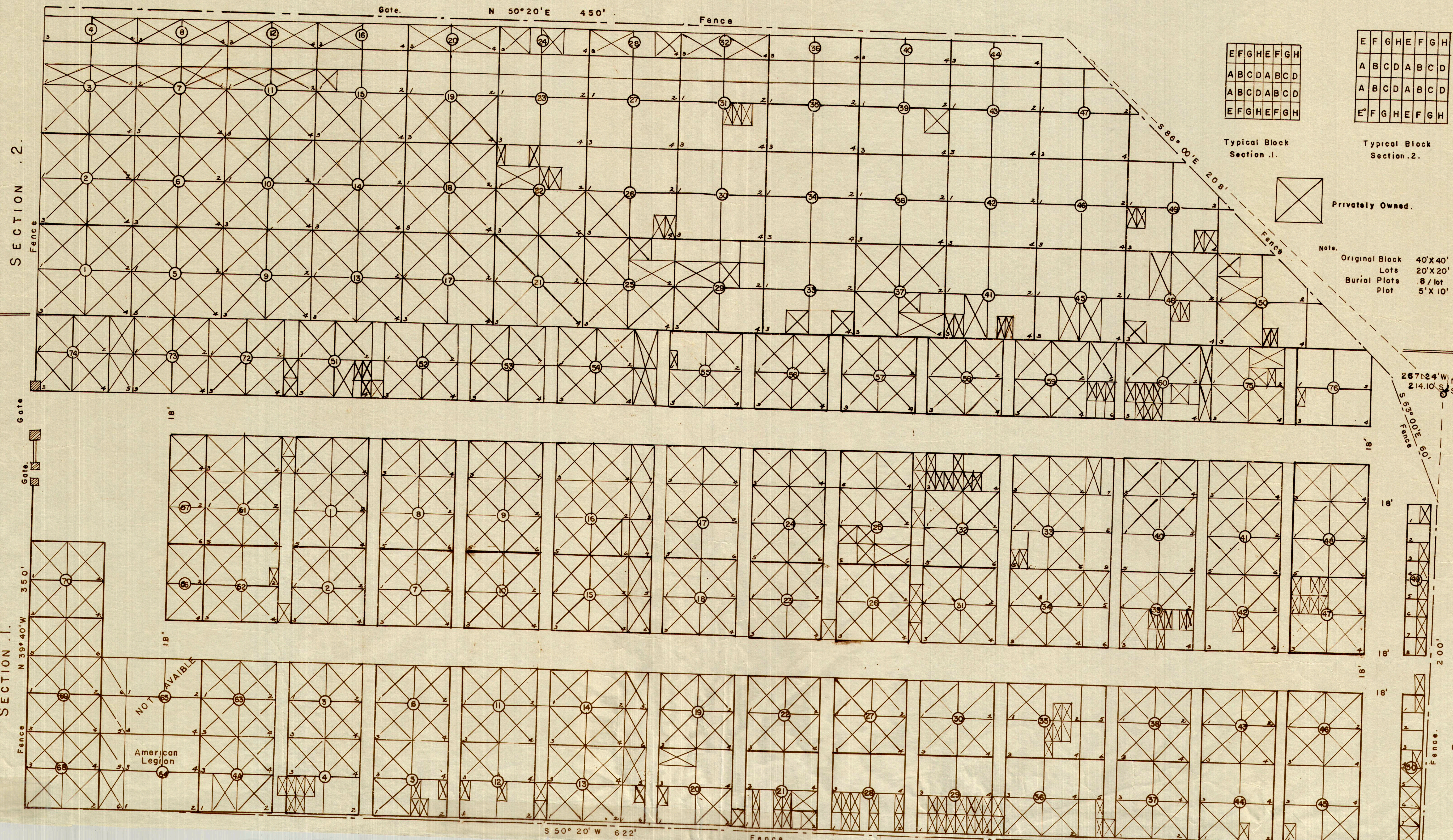
#1

STATE OF UTAH }
COUNTY OF CARBON } 55
FILED AND RECORDED }
HELPER CITY }
MAR 17 9 15 AM '71 }
BOOK 3 of Plats }
PAGE 118 }
JAMES B. BROWN }
COUNTY RECORDER }

Entry No. 121461
Indexed
Abstracted
Rec. Fee _____



Attested by _____
Helper City Recorder



Typical Block Section 1.

E	F	G	H	E	F	G	H
A	B	C	D	A	B	C	D
A	B	C	D	A	B	C	D
E	F	G	H	E	F	G	H

Typical Block Section 2.

E	F	G	H	E	F	G	H
A	B	C	D	A	B	C	D
A	B	C	D	A	B	C	D
E	F	G	H	E	F	G	H

Note:
Original Block 40' X 40'
Lots 20' X 20'
Burial Plots 8 / lot
Plot 5' X 10'

267° 24' W NE. Cor.
214.10' Sec. 19, Twp 13 S, R 10 E
S.L.B.M.

NOT AVAILABLE
American Legion

SECTION 2.2

SECTION 1.1

SECTION 1.1