

K INITIALS (AMENDED)

CIRCLE K - MINOR SUBDIVISION (AMENDED PLAT)

COUNTY APPROVALS

COUNTY SURVEYOR'S CERTIFICATE

I HEREBY CERTIFY THAT I HAVE HAD THIS PLAT EXAMINED BY THIS OFFICE AND THAT IT IS CORRECT AND IN ACCORDANCE WITH INFORMATION ON FILE.

6/18/82
DATE

Out Z Baker
CARBON COUNTY SURVEYOR

COUNTY PLANNING & ZONING COMMISSION

PRESENTED TO THE CARBON COUNTY PLANNING & ZONING COMMISSION THIS 22 DAY OF June 1982, AT WHICH TIME THIS MINOR SUBDIVISION WAS APPROVED AND ACCEPTED

David R. Marston
PLANNING & ZONING COMMISSION CHAIRMAN

CARBON COUNTY COMMISSION

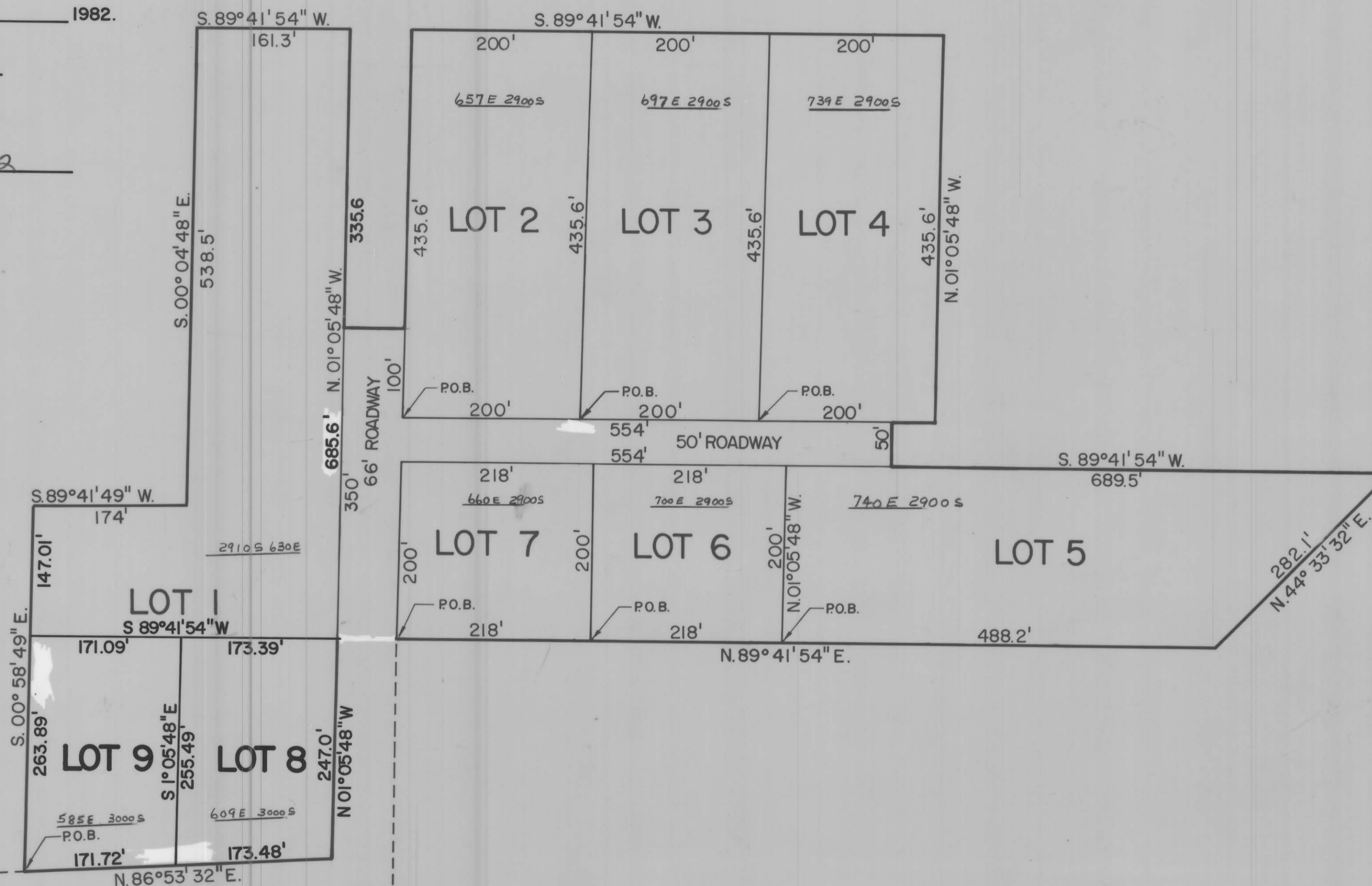
PASSED THIS 9th DAY OF July 1982.

Lee Henden
CHAIRMAN, CARBON COUNTY COMMISSION

ATTEST: Norman Pruchard 7-28-82
COUNTY CLERK DATE



SCALE: 1" = 100'



AMENDMENT ACKNOWLEDGED BY:

David R. Marston
George Hillis
Stephen Henderson
Dina Khatipov

LEGAL DESCRIPTIONS OF LOTS

LOT NO. 1

BEGINNING AT A POINT WHICH LIES 323.43 FT. EAST AND 314.67 FT. NORTH FROM THE SOUTH 1/4 CORNER OF SECTION 33, T.14 S., R.10 E., S.L.B. & M., AND RUNNING THENCE N 89°41'54" E, 344.48 FT.; THENCE N.01°05'48" W, 385.6 FT.; THENCE S.89°41'54" W, 161.3 FT.; THENCE S.00°04'48" E, 538.5 FT.; THENCE S.89°41'49" W, 174.0 FT.; THENCE S.00°58'49" E, 147.01 FT. TO THE POINT OF BEGINNING. CONTAINS 3.21 ACRES.

LOT NO. 2

BEGINNING AT A POINT WHICH LIES 728.64 FT. EAST AND 566.78 FT. NORTH FROM THE SOUTH 1/4 CORNER OF SECTION 33, T.14 S., R.10 E., S.L.B. & M., AND RUNNING THENCE N.89°41'54" E. 200.0 FT.; THENCE N.01°05'48" W. 435.6 FT.; THENCE S.89°41'54" W. 200.0 FT.; THENCE S.01°05'48" E. 435.6 FT. TO THE POINT OF BEGINNING. CONTAINS 2.00 ACRES.

LOT NO. 3

BEGINNING AT A POINT WHICH LIES 928.63 FT. EAST AND 567.83 FT. NORTH FROM THE SOUTH 1/4 CORNER OF SECTION 33, T.14 S., R.10 E., S.L.B. & M., AND RUNNING THENCE N.89°41'54" E. 200.0 FT.; THENCE N.01°05'48" W. 435.6 FT.; THENCE S.89°41'54" W. 200.0 FT.; THENCE S.01°05'48" E. 435.6 FT. TO THE POINT OF BEGINNING. CONTAINS 2.00 ACRES.

LOT NO. 4

BEGINNING AT A POINT WHICH LIES 1,128.63 FT. EAST AND 568.89 FT. NORTH FROM THE SOUTH 1/4 CORNER OF SECTION 33, T.14 S., R.10 E., S.L.B. & M., AND RUNNING THENCE N.89°41'54" E. 200.0 FT.; THENCE N.01°05'48" W. 435.6 FT.; THENCE S.89°41'54" W. 200.0 FT.; THENCE S.01°05'48" E. 435.6 FT. TO THE POINT OF BEGINNING. CONTAINS 2.00 ACRES.

LOT NO. 5

BEGINNING AT A POINT WHICH LIES 1,169.41 FT. EAST AND 319.12 FT. NORTH FROM THE SOUTH 1/4 CORNER OF SECTION 33, T.14 S., R.10 E., S.L.B. & M., AND RUNNING THENCE N.89°41'54" E. 488.2 FT.; THENCE N.44°33'32" E. 282.1 FT.; THENCE S.89°41'54" W. 689.5 FT.; THENCE S.01°05'48" E. 200.0 FT. TO THE POINT OF BEGINNING. CONTAINS 2.70 ACRES.

LOT NO. 6

BEGINNING AT A POINT WHICH LIES 951.42 FT. EAST AND 317.97 FT. NORTH FROM THE SOUTH 1/4 CORNER OF SECTION 33, T.14 S., R.10 E., S.L.B. & M., AND RUNNING THENCE N.89°41'54" E. 218.0 FT.; THENCE N.01°05'48" W. 200.00 FT.; THENCE S.89°41'54" W. 218.0 FT.; THENCE S.01°05'48" E. 200.0 FT. TO THE POINT OF BEGINNING. CONTAINS 1.00 ACRES.

LOT NO. 7

BEGINNING AT A POINT WHICH LIES 733.42 FT. EAST AND 316.83 FT. NORTH FROM THE SOUTH 1/4 CORNER OF SECTION 33, T.14 S., R.10 E., S.L.B. & M., AND RUNNING THENCE N.89°41'54" E. 218.0 FT.; THENCE N.01°05'48" W. 200.0 FT.; THENCE S.89°41'54" W. 218.0 FT.; THENCE S.01°05'48" E. 200.0 FT. TO THE POINT OF BEGINNING. CONTAINS 1.00 ACRES.

LOT NO. 8

BEGINNING AT A POINT WHICH LIES 499.41 FT. EAST AND 60.12 FT. NORTH FROM THE SOUTH 1/4 CORNER OF SECTION 33, T.14 S., R.10 E., S.L.B. & M., AND RUNNING THENCE N.86°53'32" E., 173.48 FT.; THENCE N.01°05'48" W., 247.0 FT.; THENCE S.89°41'54" W., 173.39 FT.; THENCE S.01°05'48" E., 255.49 FT. TO THE POINT OF BEGINNING. CONTAINS 1.00 ACRES.

LOT NO. 9

BEGINNING AT A POINT WHICH LIES 327.94 FT. EAST AND 50.81 FT. NORTH FROM THE SOUTH 1/4 CORNER OF SECTION 33, T.14 S., R.10 E., S.L.B. & M., AND RUNNING THENCE N.89°53'32" E., 171.72 FT.; THENCE N.01°05'48" W., 255.49 FT.; THENCE S.89°41'54" W., 171.09 FT.; THENCE S.00°58'49" E., 263.89 FT. TO THE POINT OF BEGINNING. CONTAINS 1.02 ACRES.

ROADWAY DESCRIPTION

BEGINNING AT A POINT WHICH LIES 733.42 FT. EAST AND 316.83 FT. NORTH FROM THE SOUTH 1/4 CORNER OF SECTION 33, T.14 S., R.10 E., S.L.B. & M., AND RUNNING THENCE S.89°41'54" W., 66 FT.; THENCE N.01°05'48" W., 350.0 FT.; THENCE N.89°41'54" E., 66 FT.; THENCE S.01°05'48" E., 100.0 FT.; THENCE N.89°41'54" W., 554.0 FT.; THENCE S.01°05'48" E., 50.0 FT.; THENCE S.89°41'54" W., 554.0 FT.; THENCE S.01°05'48" E., 200 FT. TO THE POINT OF BEGINNING.

33-14-10
AMENDED
CIRCLE K