

**MINOR SUBDIVISION
COUNTY PLANNING & ZONING COMMISSION
APPROVAL & ACCEPTANCE**

PRESENTED TO THE CARBON COUNTY PLANNING & ZONING COMMISSION THIS 6th DAY OF June 1996 AT WHICH TIME THIS PETITION FOR WAS APPROVED AND ACCEPTED, AS A MINOR SUBDIVISION.

Rudolf P. Felt
PLANNING & ZONING COMMISSION CHAIRMAN

COUNTY ENGINEERS CERTIFICATE

I HEREBY CERTIFY THAT THIS OFFICE HAS EXAMINED THIS PLAT AND IT IS CORRECT IN ACCORDANCE WITH THE INFORMATION ON FILE IN THIS OFFICE.

Nick Thomas June 11, 1996
ASST. CARBON COUNTY ENGINEER DATE

PROPERTY OWNER

I HAVE REVIEWED AND DO HEREBY APPROVE.

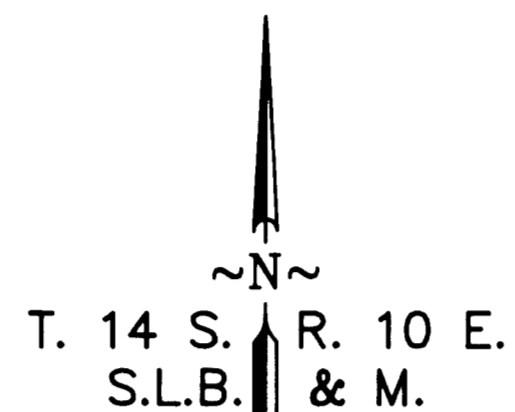
Dave D. Lauriski *Marlyn Lauriski* 6-11-96
DAVE D. LAURISKI MARLYN LAURISKI DATE

ENGINEER'S CERTIFICATE

I, EVAN E. HANSEN, DO HEREBY CERTIFY THAT I AM A REGISTERED LAND SURVEYOR AND PROFESSIONAL ENGINEER HOLDING CERTIFICATE NO. 145656 AS PRESCRIBED UNDER THE LAWS OF THE STATE OF UTAH. I FURTHER CERTIFY THAT I HAVE MADE AN AMENDED PLAT OF THE TRACT OF GROUND SHOWN AND THAT IT IS TRUE AND CORRECT TO THE BEST OF MY KNOWLEDGE.

Evan E. Hansen JUNE 11, 1996
EVAN E. HANSEN DATE

**CIRCLE K - MINOR SUBDIVISION
(AMENDED PLAT #2)**



SCALE: 1" = 100'

LEGAL DESCRIPTIONS OF LOTS

LOT NO. 1

BEGINNING AT A POINT WHICH LIES 323.43 FT. EAST AND 314.67 FT. NORTH FROM THE SOUTH 1/4 CORNER OF SECTION 33, T.14S. R.10E. S.L.B. & M., AND RUNNING THENCE N 89°41'54" E, 344.48 FT.; THENCE N 01°05'48" W, 385.6 FT.; THENCE S 89°41'54" W, 161.3 FT.; THENCE S 00°04'48" E, 538.5 FT.; THENCE S 89°41'49" W, 174.0 FT.; THENCE S 00°58'49" E, 147.01 FT. TO THE POINT OF BEGINNING. CONTAINS 3.21 ACRES

LOT NO. 2

BEGINNING AT A POINT WHICH LIES 728.64 FT. EAST AND 566.78 FT. NORTH FROM THE SOUTH 1/4 CORNER OF SECTION 33, T.14S. R.10E. S.L.B. & M., AND RUNNING THENCE N 89°41'54" E, 200.0 FT.; THENCE N 01°05'48" W, 435.6 FT.; THENCE S 89°41'54" W, 200.0 FT.; THENCE S 01°05'48" E, 435.6 FT.; TO THE POINT OF BEGINNING. CONTAINS 2.00 ACRES

LOT NO. 3

BEGINNING AT A POINT WHICH LIES 928.63 FT. EAST AND 567.83 FT. NORTH FROM THE SOUTH 1/4 CORNER OF SECTION 33, T.14S. R.10E. S.L.B. & M., AND RUNNING THENCE N 89°41'54" E, 200.0 FT.; THENCE N 01°05'48" W, 435.6 FT.; THENCE S 89°41'54" W, 200.0 FT.; THENCE S 01°05'48" E, 435.6 FT.; TO THE POINT OF BEGINNING. CONTAINS 2.00 ACRES

LOT NO. 4

BEGINNING AT A POINT WHICH LIES 1128.63 FT. EAST AND 568.89 FT. NORTH FROM THE SOUTH 1/4 CORNER OF SECTION 33, T.14S. R.10E. S.L.B. & M., AND RUNNING THENCE N 89°41'54" E, 200.0 FT.; THENCE N 01°05'48" W, 435.6 FT.; THENCE S 89°41'54" W, 200.0 FT.; THENCE S 01°05'48" E, 261.15 FT. TO THE POINT OF BEGINNING. CONTAINS 1.20 ACRES

LOT NO. 5

BEGINNING AT A POINT WHICH LIES 1169.41 FT. EAST AND 319.12 FT. NORTH FROM THE SOUTH 1/4 CORNER OF SECTION 33, T.14S. R.10E. S.L.B. & M., AND RUNNING THENCE N 89°41'54" E, 488.2 FT.; THENCE N 44°33'32" E, 282.1 FT.; THENCE S 89°41'54" W, 689.5 FT.; THENCE S 01°05'48" E, 200.0 FT. TO THE POINT OF BEGINNING. CONTAINS 2.70 ACRES

LOT NO. 6

BEGINNING AT A POINT WHICH LIES 951.42 FT. EAST AND 317.97 FT. NORTH FROM THE SOUTH 1/4 CORNER OF SECTION 33, T.14S. R.10E. S.L.B. & M., AND RUNNING THENCE N 89°41'54" E, 218.0 FT.; THENCE N 01°05'48" W, 200.0 FT.; THENCE S 89°41'54" W, 218.0 FT.; THENCE S 01°05'48" E, 200.0 FT. TO THE POINT OF BEGINNING. CONTAINS 1.00 ACRES

LOT NO. 7

BEGINNING AT A POINT WHICH LIES 733.42 FT. EAST AND 316.83 FT. NORTH FROM THE SOUTH 1/4 CORNER OF SECTION 33, T.14S. R.10E. S.L.B. & M., AND RUNNING THENCE N 89°41'54" E, 218.0 FT.; THENCE N 01°05'48" W, 200.0 FT.; THENCE S 89°41'54" W, 218.0 FT.; THENCE S 01°05'48" E, 200.0 FT. TO THE POINT OF BEGINNING. CONTAINS 1.00 ACRES

LOT NO. 8

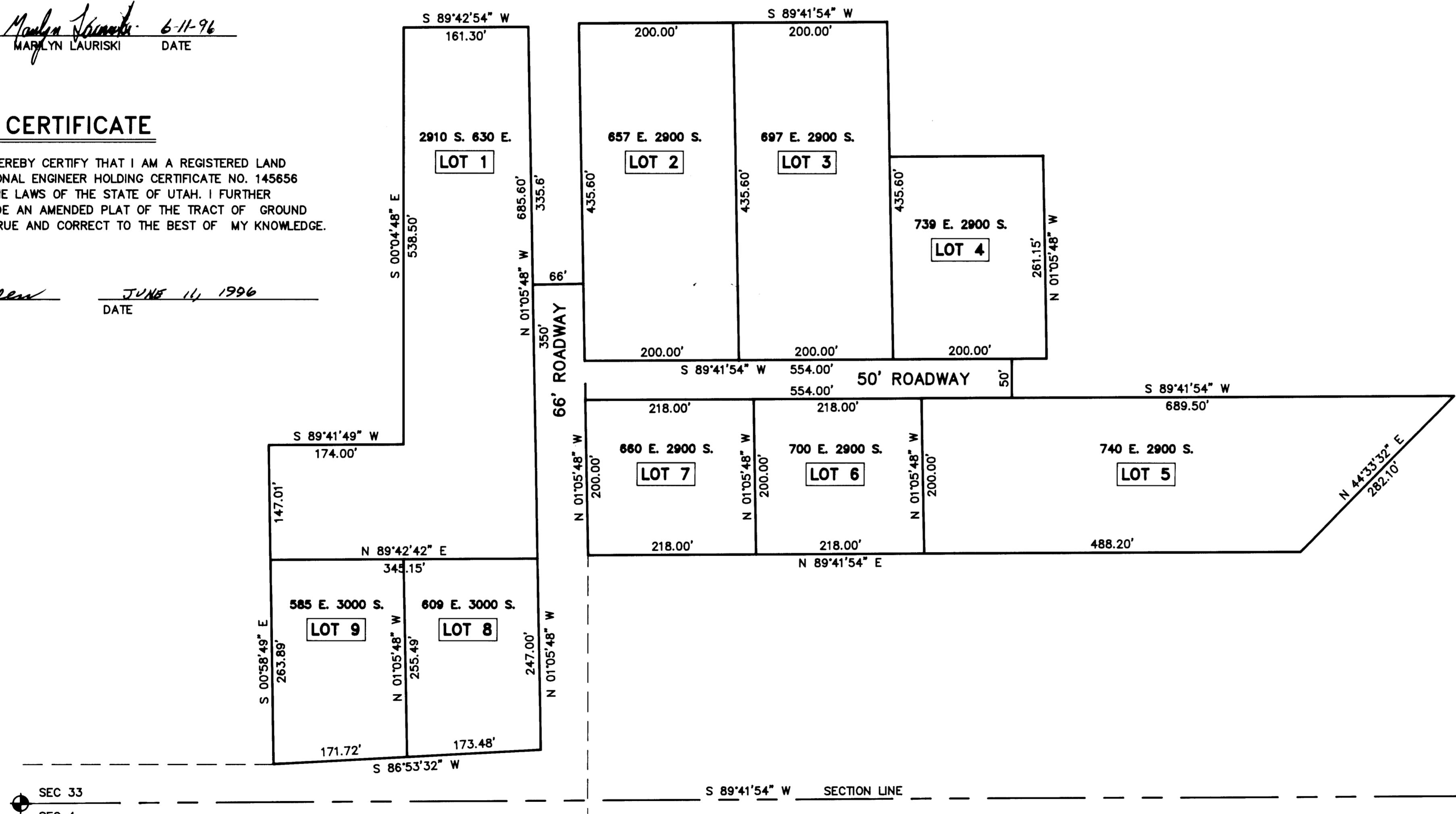
BEGINNING AT A POINT WHICH LIES 499.41 FT. EAST AND 60.12 FT. NORTH FROM THE SOUTH 1/4 CORNER OF SECTION 33, T.14S. R.10E. S.L.B. & M., AND RUNNING THENCE N 86°53'32" E, 173.48 FT.; THENCE N 01°05'48" W, 247.0 FT.; THENCE S 89°41'54" W, 173.39 FT.; THENCE S 01°05'48" E, 255.49 FT. TO THE POINT OF BEGINNING. CONTAINS 1.00 ACRES

LOT NO. 9

BEGINNING AT A POINT WHICH LIES 327.94 FT. EAST AND 50.81 FT. NORTH FROM THE SOUTH 1/4 CORNER OF SECTION 33, T.14S. R.10E. S.L.B. & M., AND RUNNING THENCE N 89°53'32" E, 171.72 FT.; THENCE N 01°05'48" W, 255.49 FT.; THENCE S 89°41'54" W, 171.09 FT.; THENCE S 00°58'49" E, 263.89 FT. TO THE POINT OF BEGINNING. CONTAINS 1.02 ACRES

ROADWAY DESCRIPTION

BEGINNING AT A POINT WHICH LIES 733.42 FT. EAST AND 316.83 FT. NORTH FROM THE SOUTH 1/4 CORNER OF SECTION 33, T.14S. R.10E. S.L.B. & M., AND RUNNING THENCE N 89°41'54" W, 166 FT.; THENCE N 01°05'48" W, 350.0 FT.; THENCE N 89°41'54" W, 66 FT.; THENCE S 01°05'48" E, 100.00 FT.; THENCE N 89°41'54" E, 554.0 FT.; THENCE S 01°05'48" E, 50.0 FT.; THENCE S 89°41'54" W, 554.0 FT.; THENCE S 01°05'48" E, 200 FT. TO THE POINT OF BEGINNING. CONTAINS 1.00 ACRES



	SECTION 33, T 14 S, R 10 E, S.L.B. & M.		
	Empire Engineering & Land Su 1665 E. Sagewood Rd. Price, Utah 84501 Phone (801)		
Property Survey For: CIRCLE 'K' - MINOR SUBDIVISION AMENDMENT #2			
Drawn By:	THK	Approved By:	EEH
Date:	6/1/96	Scale:	1" = 100'
			Approved By: EE

33-14-10