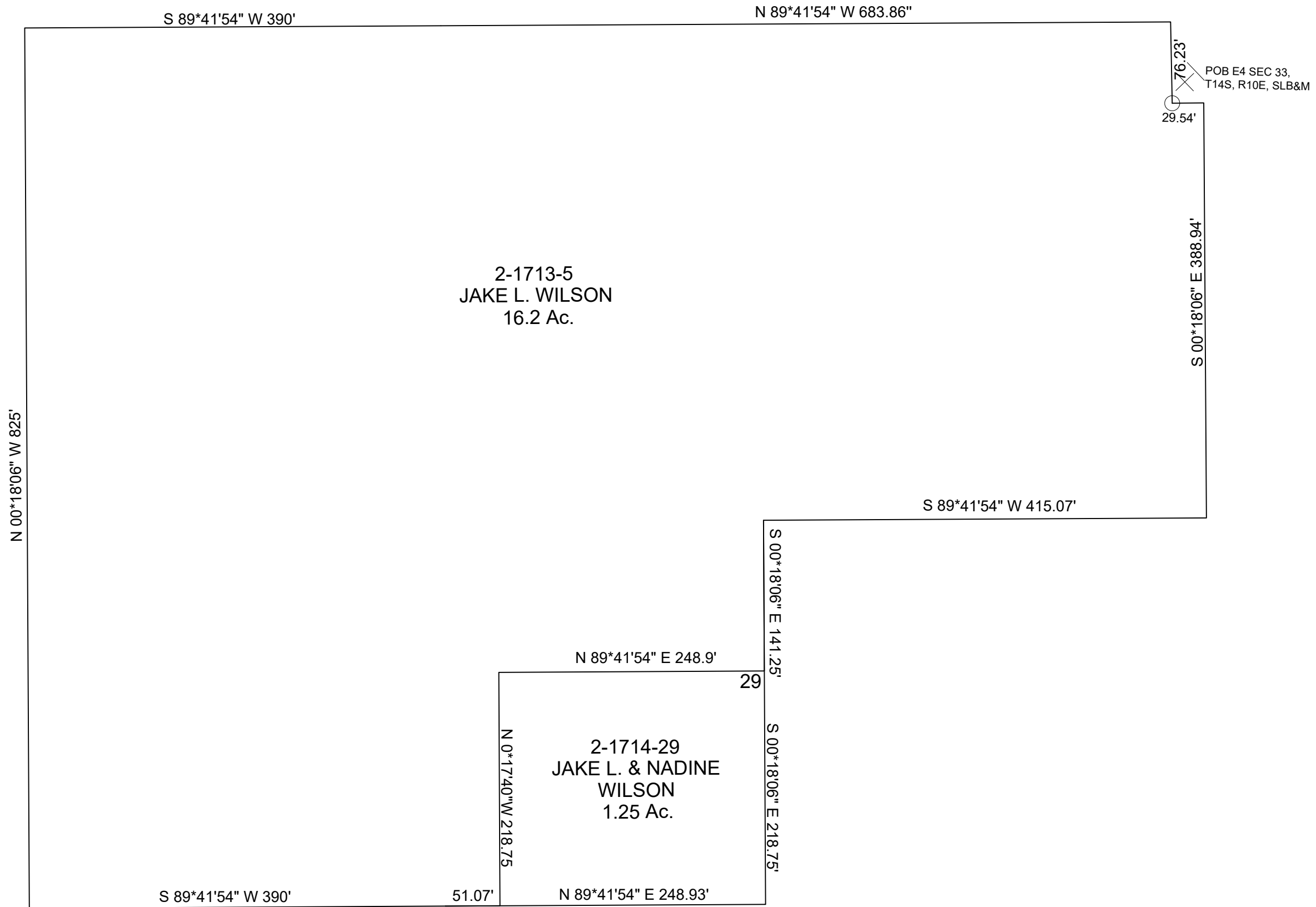


NOTE: 25' TO POINT ORIGINALLY ASSUMED
TO BE 1/4 CORNER AS OF NOV. 1980
29.54' USING 1/4 CORNER SET BY
CARBON COUNTY SURVEYOR'S OFFICE



CARBON COUNTY PLATS
CIRCLE K SUBDIVISION - PLAT 'E' AMENDED PART OF SECTION 33 & 34, T14S, R10E, SLB&M

SCALE: 100 FEET = 1 INCH
FEBRUARY 22, 2021

Carbon County assumes no
liability for errors or omissions in
any information.