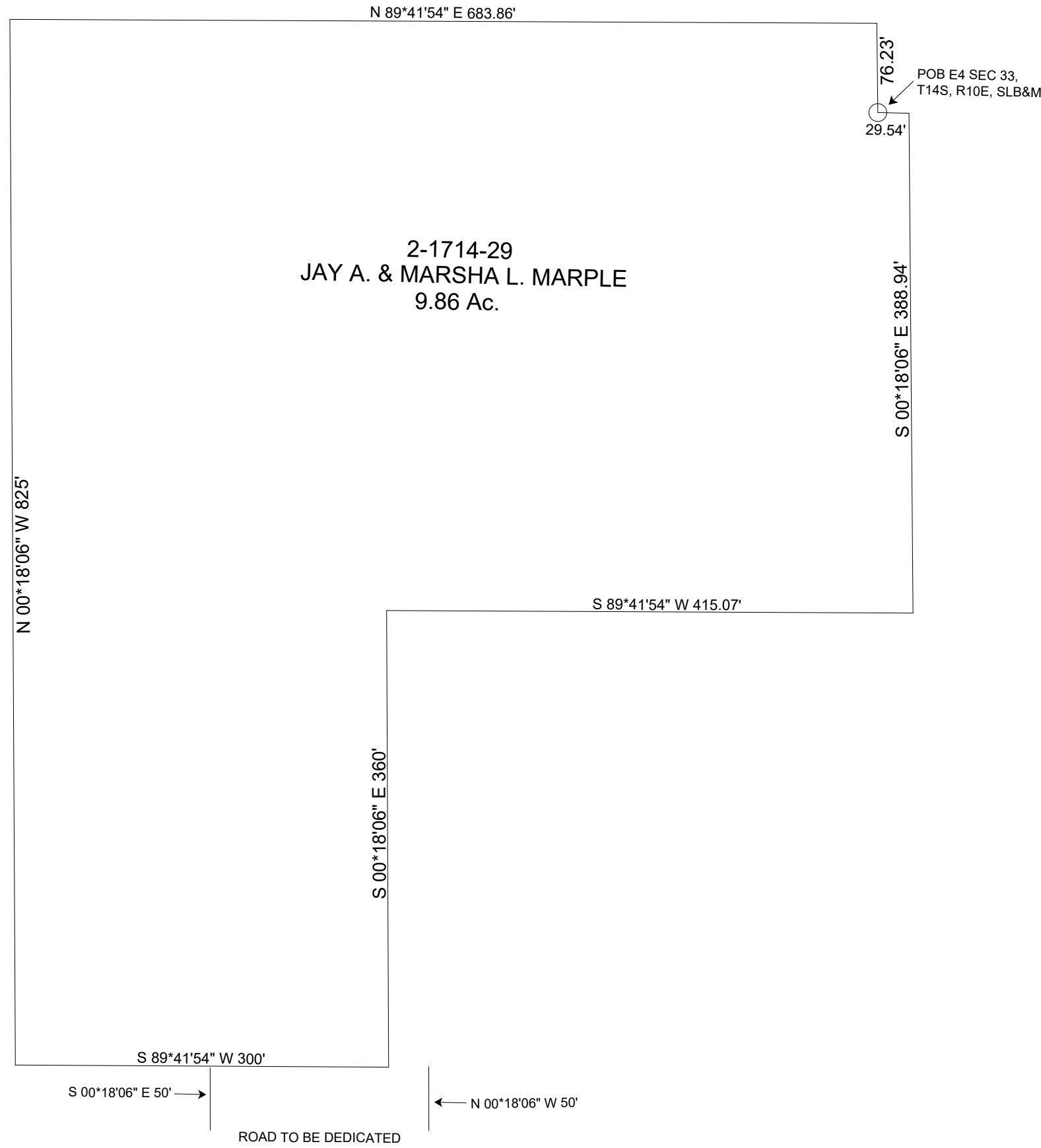


NOTE: 25' TO POINT ORIGINALLY ASSUMED  
TO BE 1/4 CORNER AS OF NOV. 1980  
29.54' USING 1/4 CORNER SET BY  
CARBON COUNTY SURVEYOR'S OFFICE



**CARBON COUNTY PLATS**  
CIRCLE K SUBDIVISION - PLAT 'E'  
PART OF SECTION 33 & 34, T14S, R10E, SLB&M

SCALE: 100 FEET = 1 INCH  
MAY 6, 2015

Carbon County assumes no  
liability for errors or omissions in  
any information.