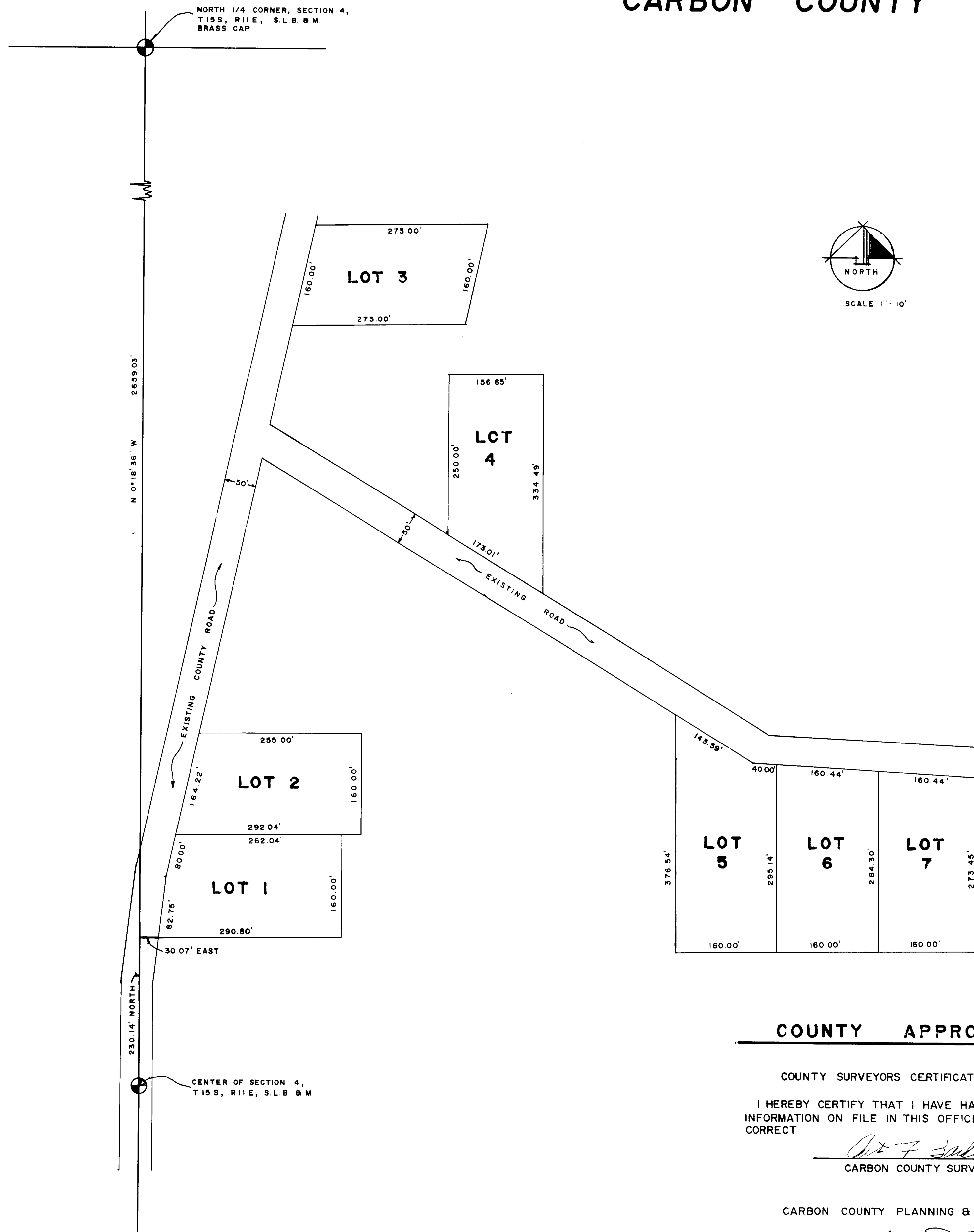


MINOR SUBDIVISION PLAN TAIN CLARK CARBON COUNTY



LOT 1
 USING THE STATE PLANE COORDINATE SYSTEM AS THE BASIS OF BEARING AND BEGINNING AT A POINT 230.14' FEET NORTH AND 30.07' FEET EAST FROM THE SOUTHWEST CORNER OF THE NORTHEAST ONE QUARTER, SECTION 4, TOWNSHIP 15 SOUTH, RANGE 11 EAST, SALT LAKE BASE & MERIDIAN. SAID POINT ALSO BEING ON THE EAST R/W LINE OF AN EXISTING ROAD THENCE N 07° 09' 11\" E, 82.75' FEET; THENCE N 12° 45' 28\" E, 80.00' FEET; THENCE N 89° 44' 11\" E, 262.04' FEET; THENCE S 0° 16' 36\" E, 160.00' FEET; THENCE S 89° 44' 11\" W, 290.80' FEET TO THE POINT OF BEGINNING. CONTAINING 1.03 ACRES, MORE OR LESS.

LOT 2
 USING THE STATE PLANE COORDINATE SYSTEM AS THE BASIS OF BEARING AND BEGINNING AT A POINT 390.27' FEET NORTH AND 58.04' FEET EAST FROM THE S.W. CORNER OF THE N.E. 1/4, SECTION 4, T.15 S., R.11 E., S.L.B. & M.. SAID POINT BEING ON THE EAST R/W LINE OF AN EXISTING COUNTY ROAD; THENCE N 12° 45' 28\" E ALONG R/W LINE 164.22' FEET; THENCE N 89° 44' 11\" E, 255.00' FEET; THENCE S 0° 16' 38\" E, 160.00' FEET; THENCE S 89° 44' 11\" W, 292.04' FEET TO POINT OF BEGINNING. CONTAINING 102 ACRES, MORE OR LESS.

LOT 3
 USING THE STATE PLANE COORDINATE SYSTEM AS THE BASIS OF BEARING AND BEGINNING AT A POINT 1191.05' FEET NORTH AND 245.90' FEET EAST FROM THE SW CORNER OF THE N.E. 1/4 OF SECTION 4, T.15 S., R.11 E., S.L.B. & M.. SAID POINT BEING ON THE EAST R/W LINE OF AN EXISTING ROAD; THENCE N 12° 45' 28\" E, 160.00' FEET ALONG THE R/W LINE; THENCE N 89° 42' 44\" E, 273.00' FEET; THENCE S 12° 45' 28\" W, 160.00' FEET; THENCE S 89° 42' 44\" W, 273.00' FEET TO THE POINT OF BEGINNING. CONTAINING 100 ACRES MORE OR LESS.

LOT 4
 USING THE STATE PLANE COORDINATE SYSTEM AS THE BASIS OF BEARING AND BEGINNING AT A POINT 865.63' FEET NORTH AND 489.78' FEET EAST FROM THE S.W. CORNER OF THE N.E. 1/4 OF SECTION 4, T.15 S., R.11 E., S.L.B. & M.. SAID POINT BEING ON THE NORTH R/W LINE OF AN EXISTING COUNTY ROAD; THENCE ALONG SAID R/W LINE S 59° 16' 19\" E, 173.01' FEET; THENCE N 0° 14' 37\" W, 334.49' FEET; THENCE S 86° 34' 56\" W, 150.65' FEET; THENCE S 0° 15' 35\" E, 250.00' FEET TO THE POINT OF BEGINNING. CONTAINING 1.00 ACRES, MORE OR LESS.

LOT 5
 USING THE STATE PLANE COORDINATE SYSTEM AS THE BASIS OF BEARING AND BEGINNING AT A POINT 203.89' FEET NORTH AND 846.33' FEET EAST FROM THE S.W. CORNER OF THE N.E. 1/4, SECTION 4, T.15 S., R.11 E., S.L.B. & M.. THENCE N 0° 13' 24\" W, 376.54' FEET TO AN EXISTING COUNTY ROAD; THENCE S 57° 01' 45\" E, ALONG R/W LINE 143.59' FEET; THENCE S 86° 23' 14\" E ALONG R/W LINE 40' FEET; THENCE S 0° 12' 25\" E, 295.14' FEET; THENCE S 89° 44' 11\" W, 160.00' FEET TO THE POINT OF BEGINNING. CONTAINING 1.20 ACRES, MORE OR LESS.

LOTS 6
 USING THE STATE PLANE COORDINATE SYSTEM AS THE BASIS OF BEARING AND BEGINNING AT A POINT 204.63' FEET NORTH AND 1006.32' FEET EAST FROM THE S.W. CORNER OF THE N.E. 1/4 SECTION 4, T.15 S., R.11 E., S.L.B. & M.. THENCE N 0° 12' 25\" W, 295.14' FEET TO AN EXISTING COUNTY ROAD. THENCE S 86° 23' 14\" E ALONG THE R/W LINE 160.44' FEET; THENCE S 0° 11' 26\" E, 284.30' FEET; THENCE S 89° 44' 11\" W, 160.00' FEET TO THE POINT OF BEGINNING. CONTAINING 1.06 ACRES, MORE OR LESS.

LOT 7
 USING THE STATE PLANE COORDINATE SYSTEM AS THE BASIS OF BEARING AND BEGINNING AT A POINT 205.36' FEET NORTH AND 1166.32' FEET EAST FROM THE S.W. CORNER OF THE N.E. 1/4 OF SECTION 4, T.15 S., R.11 E., S.L.B. & M.. THENCE N 0° 11' 26\" W, 284.30' FEET TO AN EXISTING COUNTY ROAD; THENCE S 86° 23' 14\" E ALONG R/W LINE 160.44' FEET; THENCE S 0° 10' 27\" E, 273.45' FEET; THENCE S 89° 44' 11\" W, 160.00' FEET TO THE POINT OF BEGINNING. CONTAINING 1.02 ACRES, MORE OR LESS.

ROAD RIGHT-OF-WAY

A COUNTY ROAD R/W EXTENDING 25' FEET ON EACH SIDE OF THE FOLLOWING DESCRIBED CENTER LINE. USING THE STATE PLANE COORDINATE SYSTEM AS BASIS OF BEARING AND BEGINNING AT A POINT 1013.78' FEET NORTH AND 191.64' FEET EAST FROM THE S.W. CORNER OF THE N.E. 1/4 OF SECTION 4, T.15 S., R.11 E., S.L.B. & M.. SAID POINT BEING ON THE EAST R/W LINE OF AN EXISTING COUNTY ROAD. THENCE S 59° 16' 19\" E, 569.29' FEET; THENCE S 57° 01' 45\" E, 364.77' FEET; THENCE S 86° 23' 14\" E, 338.99' FEET SAID POINT BEING 503.03' FEET NORTH AND 1325.33' FEET EAST OF S.W. CORNER OF THE N.E. 1/4 SECTION 4, T.15 S., R.11 E., S.L.B. & M.

COUNTY APPROVALS

COUNTY SURVEYORS CERTIFICATE

I HEREBY CERTIFY THAT I HAVE HAD THIS PLAT CHECKED WITH INFORMATION ON FILE IN THIS OFFICE AND HAVE FOUND IT TO BE CORRECT

[Signature] 5/18/86
 CARBON COUNTY SURVEYOR DATE

CARBON COUNTY PLANNING & ZONING COMMISSION

APPROVED *[Signature]* 5/24/86
 COMMISSION CHAIRMAN DATE