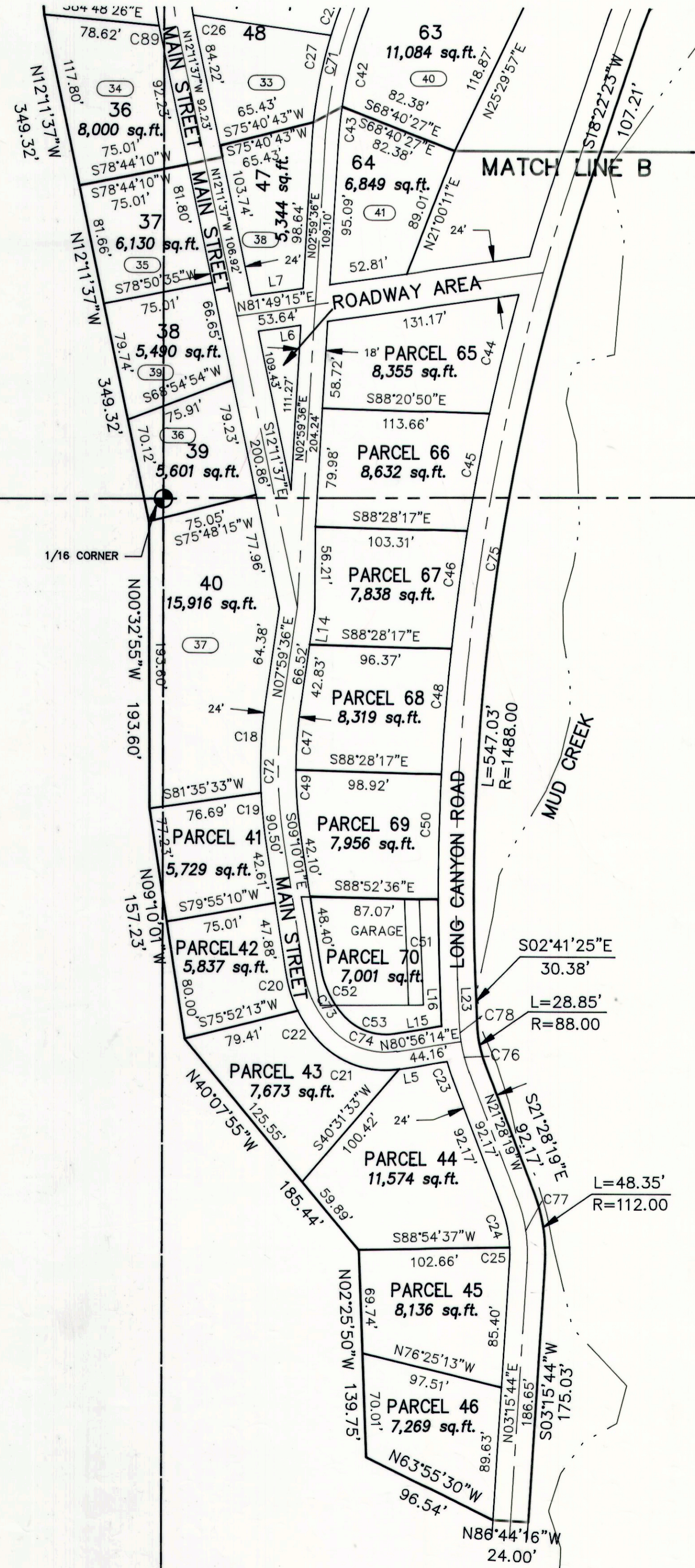
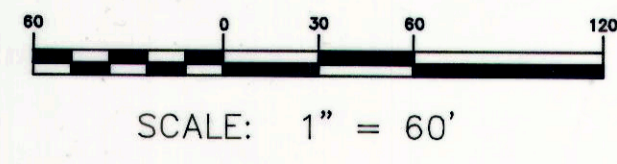


CLEAR CREEK 2000

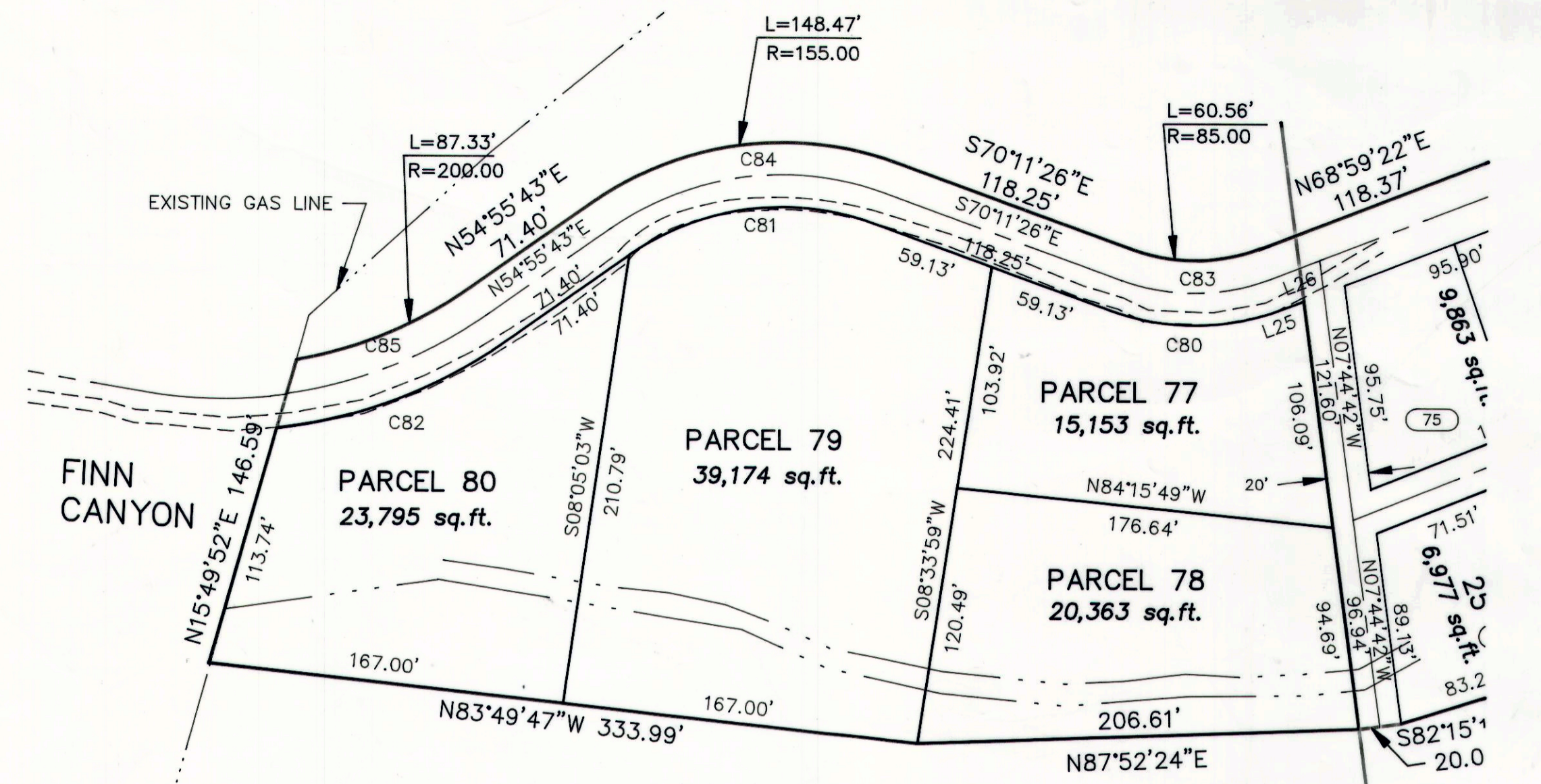
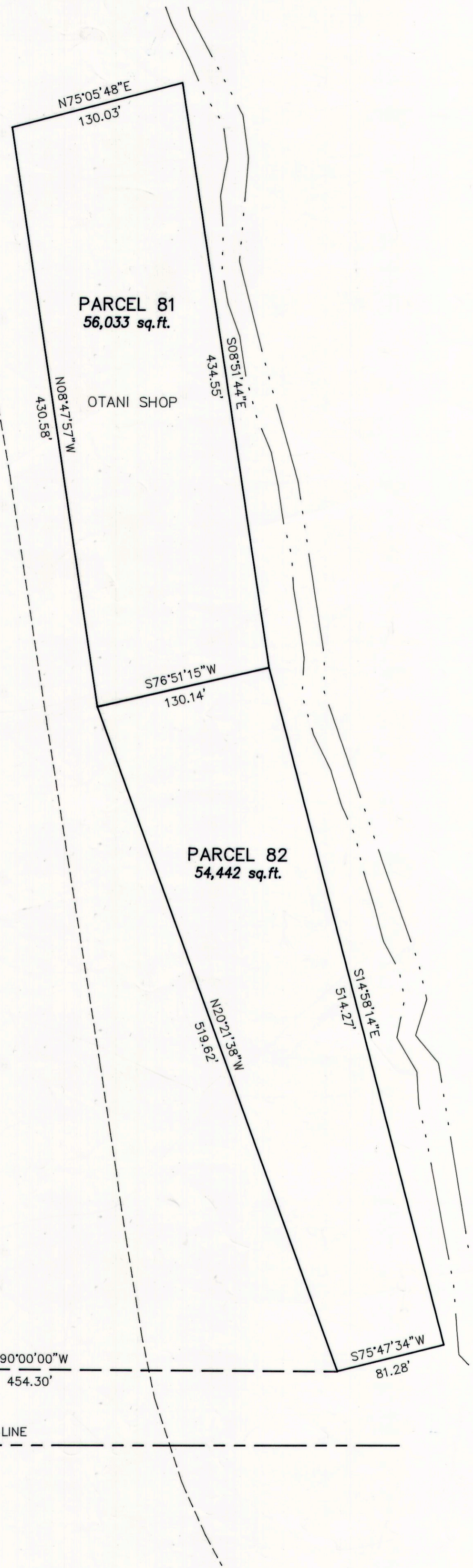
CARBON COUNTY
SHEET 2 of 2



SECTION LINE

SECTION LINE

WEST 1/4 CORNER
SECTION 33
T 13 S, R 7 E,
S.L.B.&M.



CURVE TABLE						
CURVE	LENGTH	RADIUS	DELTA	TANGENT	BEARING	CHORD
1	125.99	400.00	18°02'48"	63.52	N29°09'32"E	125.47
2	113.91	500.00	13°03'10"	57.20	N32°28'04"E	113.66
3	118.90	400.00	17°01'53"	59.89	N46°41'53"E	118.46
4	90.86	500.00	10°24'44"	45.56	N44°12'01"E	90.74
5	68.40	500.00	07°50'17"	34.25	N53°19'32"E	68.35
6	14.18	400.00	02°01'51"	7.09	N56°13'45"E	14.18
9	39.07	415.00	05°23'39"	19.55	S77°43'18"W	39.06
10	43.71	415.00	06°02'07"	21.88	S72°00'25"W	43.69
11	76.80	385.00	11°25'45"	38.53	S74°42'15"W	76.67
12	23.70	22.00	61°42'42"	13.14	N21°16'28"E	22.57
13	6.08	172.00	02°01'31"	3.04	S84°40'02"W	6.08
14	55.70	148.00	21°33'52"	28.18	S79°02'50"W	55.37
15	56.00	148.00	21°40'49"	28.34	N79°19'50"W	55.67
16	55.94	182.00	17°36'44"	28.19	S26°04'59"W	55.72
17	90.32	182.00	28°26'05"	46.11	S03°03'34"W	89.40
18	60.98	312.00	11°11'55"	30.59	S02°23'39"W	60.88
19	32.46	312.00	05°57'42"	16.25	S06°11'10"E	32.45
20	26.87	87.00	17°41'41"	13.54	S18°00'51"E	26.76
21	60.40	62.00	55°49'08"	32.84	S71°09'13"E	58.04
22	24.88	87.00	16°22'58"	12.52	S35°03'10"E	24.79
23	12.23	112.00	06°15'30"	6.12	S18°20'34"E	12.23
24	28.72	88.00	18°42'08"	14.49	N12°07'15"W	28.60
25	9.26	88.00	06°01'55"	4.64	N00°14'46"E	9.26
26	1.17	158.00	00°25'31"	0.59	S11°58'52"E	1.17
27	59.88	309.00	11°06'13"	30.04	S11°09'02"W	59.79
28	85.07	158.00	30°50'55"	43.59	S05°18'59"W	84.04
29	29.86	309.00	05°32'13"	14.94	S19°28'15"W	29.85
30	39.02	158.00	14°08'54"	19.61	S27°48'53"W	38.92
31	16.05	1009.00	00°54'41"	8.02	S22°41'42"W	16.05
32	6.62	65.00	05°49'54"	3.31	N21°58'23"E	6.61
33	47.11	1009.00	02°40'30"	23.56	S24°29'17"W	47.10
34	51.33	65.00	45°14'36"	27.09	N03°33'52"W	50.00
35	46.93	1009.00	02°39'54"	23.47	S27°09'29"W	46.93
36	11.36	230.00	02°49'48"	5.68	N58°39'34"E	11.36
37	26.28	1009.00	01°29'32"	13.14	S29°14'12"W	26.28
38	38.37	41.00	53°37'15"	20.72	N03°10'21"E	36.99
39	21.08	991.00	01°13'08"	10.54	S29°22'24"W	21.08
40	66.99	991.00	03°52'22"	33.51	S26°49'39"W	66.97
41	46.50	991.00	02°41'19"	23.26	S23°32'48"W	46.50
42	72.01	291.00	14°10'41"	36.19	S15°09'01"W	71.83
43	25.74	291.00	05°04'04"	12.88	S05°31'38"W	25.73
44	82.86	1512.00	03°08'24"	41.44	S13°27'54"W	82.85
45	80.67	1512.00	03°03'25"	40.35	S10°21'59"W	80.66
46	80.14	1512.00	03°02'13"	40.08	S07°19'10"W	80.13
47	42.15	288.00	08°23'07"	21.11	S03°48'02"W	42.11
48	84.74	1512.00	03°12'41"	42.38	S04°11'43"W	84.73
49	44.11	288.00	08°46'29"	22.10	S04°46'46"E	44.06
50	84.56	1512.00	03°12'16"	42.29	S00°59'15"W	84.55
51	54.77	1512.00	02°04'32"	27.39	S01°39'09"E	54.77
52	37.47	63.00	34°04'39"	19.31	S26°12'20"E	36.92
53	37.02	38.00	55°49'07"	20.13	S71°09'13"E	35.57
54	282.67	515.00	31°26'52"	144.99	N41°31'14"E	279.13
57	24.65	215.00	06°34'09"	12.34	N60°31'45"E	24.64
58	62.31	215.00	16°36'18"	31.37	N72°06'58"E	62.09
59	79.79	400.00	11°25'45"	40.03	S74°42'15"W	79.66
60	30.72	160.00	11°00'05"	15.41	S73°45'56"W	30.67
61	14.23	160.00	05°05'38"	7.12	S81°48'48"W	14.22
62	75.82	160.00	27°08'57"	38.63	N82°03'54"W	75.11
63	32.31	30.00	61°42'42"	17.92	N21°16'28"E	30.77
64	51.65	230.00	12°51'56"	25.93	N73°59'09"E	51.54
65	31.20	35.00	51°04'31"	16.72	N00°38'55"W	30.18
66	40.93	38.00	61°42'42"	22.70	N21°16'28"E	38.98

CURVE TABLE						
CURVE	LENGTH	RADIUS	DELTA	TANGENT	BEARING	CHORD
66	40.93	38.00	61°42'42"	22.70	N21°16'28"E	38.98
67	135.15	1000.00	07°44'36"	67.68	S26°06'40"W	135.05
68	44.57	50.00	51°04'31"	23.89	N00°38'55"W	43.11
69	54.75	50.00	62°44'18"	30.48	N01°23'11"W	52.05
70	132.12	170.00	44°31'39"	69.60	S12°37'31"W	128.82
71	100.77	300.00	19°14'46"	50.87	S12°36'59"W	100.30
72	89.85	300.00	17°09'37"	45.26	S00°35'12"E	89.52
73	44.61	75.00	34°04'39"	22.99	S26°12'20"E	43.95
74	48.71	50.00	55°49'07"	26.48	S71°09'13"E	46.81
75	551.44	1500.00	21°03'48"	278.87	S07°50'29"W	548.34
76	21.66	100.00	12°24'33"	10.87	S15°16'03"E	21.62
77	43.17	100.00	24°44'03"	21.93	N09°06'18"W	42.83
78	11.12	100.00	06°22'21"	5.57	S05°52'36"E	11.12
79	51.46	172.00	17°08'37"	25.93	N77°03'44"W	51.27
80	81.93	115.00	40°49'12"	42.79	N89°23'58"E	80.21
81	119.73	125.00	54°52'51"	64.91	S82°22'09"W	115.21
82	114.78	230.00	28°35'36"	58.61	N69°33'31"E	113.59
83	71.24	100.00	40°49'12"	37.21	N89°23'58"E	69.75
84	134.10	140.00	54°52'51"	72.69	S82°22'09"W	129.03
85	101.10	215.00	26°56'35"	51.50	N68°24'01"E	100.17
86	72.07	38.00	08°39'58"	36.99	N82°59'00"E	61.74
87	63.28	630.00	06°50'27"	31.68	N42°35'55"E	63.24
88	5.62	52.00	05°11'47"	2.81	N31°14'54"E	5.62
89	3.29	182.00	01°02'09"	1.65	S11°40'33"E	3.29
90	80.89	200.00	23°10'27"	41.01	N68°49'54"E	80.34

LINE TABLE		
LINE	LENGTH	BEARING
L1	30.18	S80°25'07"W
L2	6.21	N09°34'53"W
L3	19.65	S68°15'54"W
L4	28.80	N68°29'26"W
L5	32.81	S80°56'14"W
L6	29.22	S81°49'15"W
L7	35.64	N81°49'15"E
L8	30.57	N22°14'22"E
L9	26.28	N65°08'51"W
L10	4.55	S26°11'10"E
L11	3.32	S26°11'10"E
L12	20.06	N29°58'58"E
L13	25.64	S29°58'58"W
L14	23.68	S07°59'36"W
L15	32.81	N02°21'25"W
L16	30.38	N02°21'25"W
L17	22.32	N57°14'40"E
L18	21.21	N09°34'53"W
L19	7.87	N26°11'10"W
L20	6.21	S09°34'53"E
L21	22.38	N26°11'10"W
L22	8.50	N32°45'20"W
L23	30.38	N02°21'25"W
L24	15.37	S52°07'49"W
L25	10.87	S68°59'22"W
L26	24.68	N68°59'22"E
L27	5.88	S70°44'04"E
L28	13.11	S28°39'09"W
L29	27.35	N90°00'00"E
L30	30.05	S47°45'45"E