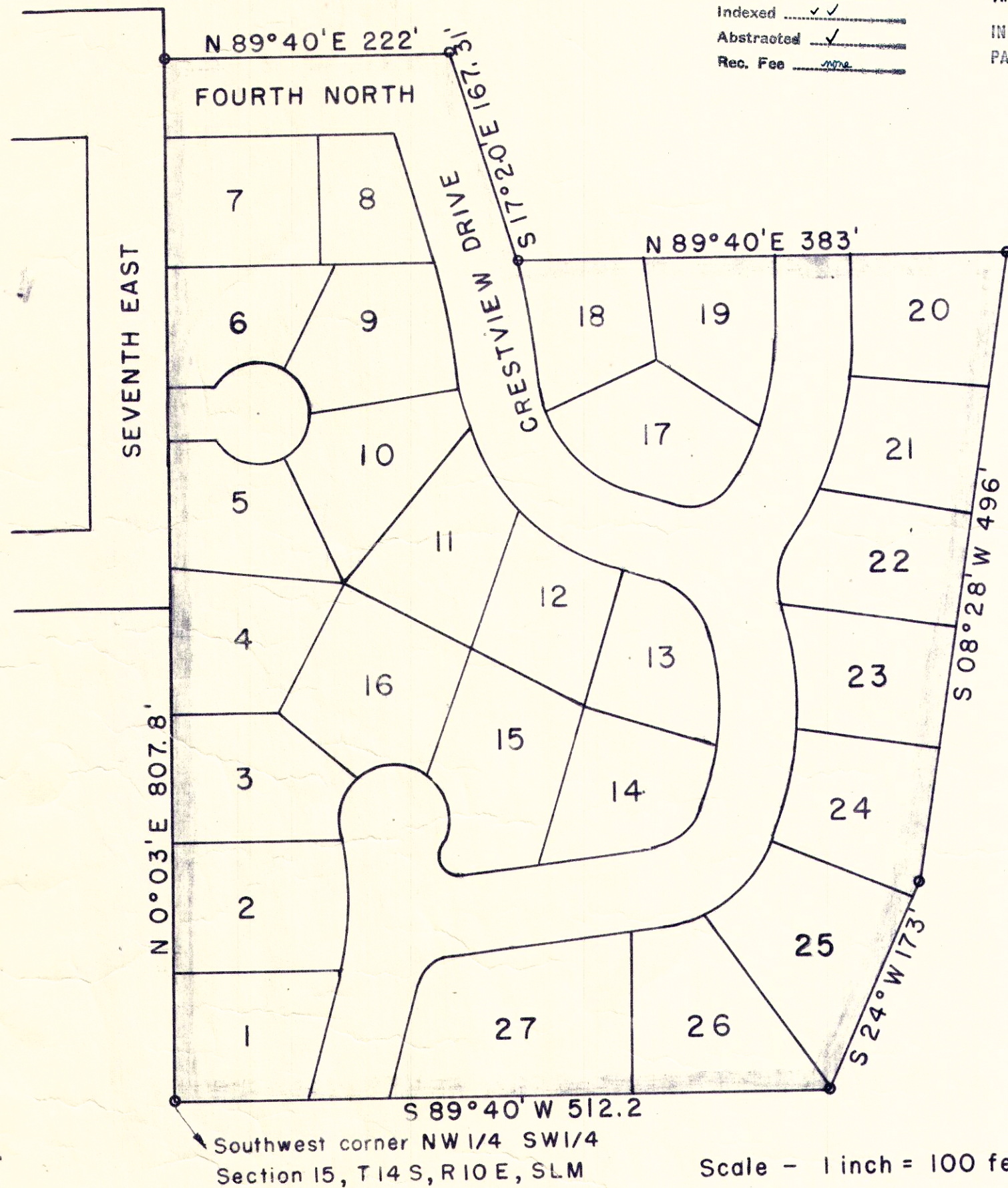


STATE OF UTAH)
 COUNTY OF CARBON) SS
 FILED AND RECORDED FOR
 PRICE CITY
 APR 23 11 12 AM '59
 IN BOOK 3 OF PLATS
 PAGE 101
 REC. FEE \$8.00
 COUNTY RECORDER

Entry No. 28400
 Indexed ✓
 Abstracted ✓
 Rec. Fee .002



PLAT OF CRESTVIEW SHOWING ADDITION TO THE PRICE CITY LIMITS AS EXTENDED BY CITY ORDINANCE NO. 1171 - 58.

ENGINEER'S CERTIFICATE

I, CARL NYMAN, A REGISTERED PROFESSIONAL ENGINEER WITHIN THE STATE OF UTAH, DO HEREBY CERTIFY THAT THIS PLAT IS A TRUE AND ACCURATE REPRESENTATION OF THE TRACT OF LAND INCLUDED WITHIN THE CITY LIMITS OF PRICE, UTAH, BY ORDINANCE NO. 1171 - 58.

Carl Nyman

Subscribed and sworn to before me this 23rd day of March, 1959.

Katherine Wallace
 Notary Public

ORDINANCE 1171-58

AN ORDINANCE DECLARING THE ANNEXATION OF, AND EXTENDING THE CORPORATE LIMITS OF THE CITY OF PRICE, COUNTY OF CARBON, STATE OF UTAH, OVER REAL PROPERTY COMPRISING LAND ADJACENT TO PRESENT NORTHEAST BOUNDARIES OF SAID CITY OF PRICE AND HERINAFTER PARTICULARLY DESCRIBED AND SET FORTH AND BEING PART OF CRESTVIEW, CARBON COUNTY, STATE OF UTAH

BE IT ORDAINED BY THE CITY COUNCIL OF THE CITY OF PRICE, COUNTY OF CARBON, STATE OF UTAH, AS FOLLOWS:

SECTION I. That whereas more than two-thirds of all members of the City Council of the City of Price, County of Carbon, State of Utah, at a regular meeting thereof, on the 14th day of July, A. D., 1958, voted for the annexation of the hereinafter described real property to the City of Price, County of Carbon, State of Utah.

IT IS HEREBY DECLARED that the real property lying contiguous to the corporate limits of the City of Price, County of Carbon, State of Utah, and hereinafter described, be and the same is hereby annexed to the City of Price, County of Carbon, State of Utah, and the limits of said City of Price, Utah, are hereby extended to embrace the said real property which is particularly bounded and described as follows, to-wit:

Beginning at the Southwest corner of the Northwest Quarter of the Southwest Quarter of Section 15, Township 14 South, Range 10 East, Salt Lake Meridian; thence North 0° 03' East 807.8 feet; thence North 89°40' East 222 feet; thence South 17° 20' East 167.31 feet; thence North 89°40' East 383 feet; thence South 08° 28' West 496 feet; thence South 24° 00' West 173 feet; thence South 89° 40' West 512.2 feet to the point of beginning, and as more particularly described on the plat of said Crestview on file in the office of the County Recorder of Carbon County, State of Utah.

Together with the streets, alleys, and easements as platted and described in the plat of said Crestview.

SECTION II. That all ordinances, resolutions and orders or parts thereof, in conflict with the provisions of this ordinance, are, to the extent of such conflict, hereby repealed.

SECTION III. That in the opinion of the City Council of Price City Utah, it is necessary to the peace, health, and safety of said City that this ordinance shall take effect immediately upon its passage, adoption, and publication.

Passed and adopted by the City Council of Price City, County of Carbon, State of Utah, and approved by the Mayor this 14th day of July, A.D., 1958.

(SEAL) HENRY H. MILLS /s/
 Mayor

ATTEST:
 KATHERINE WALLACE /s/
 City Recorder

Published: August 14, 1958

Note - Lots 4 to 10 were previously annexed to Price City by Ordinance No. 1161 - 57 but included in this plat and description for convenience and completeness. Shaded line shows City Limits as extended.