

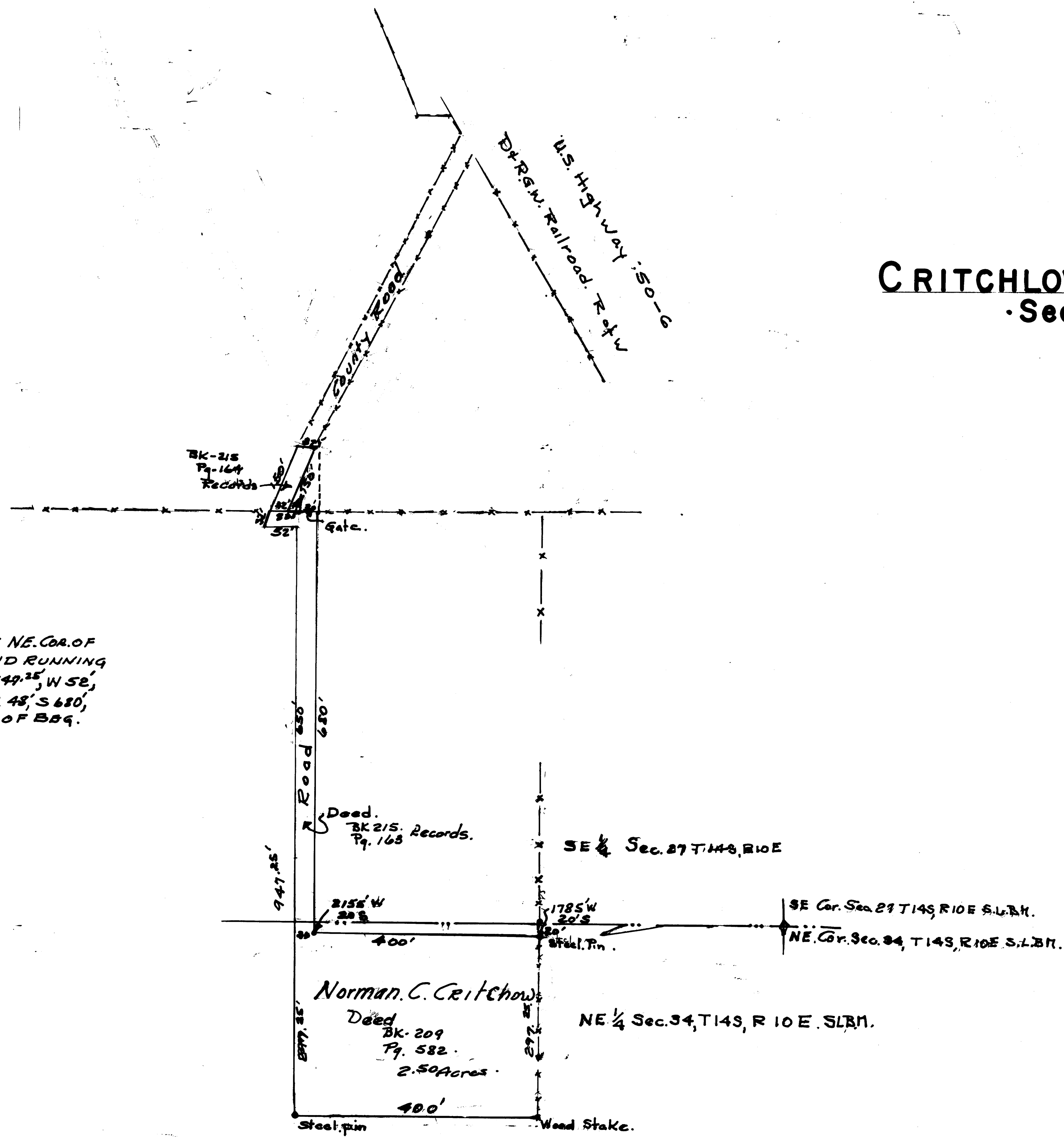
N

Scale 1"=100'

CRITCHLOW MINOR SUBDIVISION Section 34, T14S, R10E S.L.B.M.

Survey by JOHN BENE
5/29/81

DESCRIPTION.
BEG. 1785' W 20'S OF THE NE. COR. OF
SEC. 34, T14S, R10E, S.L.B.M. AND RUNNING
THENCE S 297°25', W 400', N 94°25', W 52',
NERLY 182', E 32', SWLY 150', E 48', S 680',
E 400' more or less to POINT OF BEG.



<p>PLANNING COMMISSION APPROVED THIS <u>23</u> DAY OF <u>OCT.</u> AD 19<u>82</u> BY THE COUNTY PLANNING COMMISSION <i>Donald R. Marrett</i> CHAIRMAN COUNTY PLANNING COM.</p>	<p>BOARD OF HEALTH APPROVED THIS _____ DAY OF _____ AD 19<u>82</u> DIRECTOR COUNTY BOARD OF HEALTH</p>	<p>SURVEYOR'S CERTIFICATE I HEREBY CERTIFY THAT THIS OFFICE HAS EXAMINED THIS PLAT AND IT IS CORRECT IN ACCORDANCE WITH INFORMATION ON FILE IN THIS OFFICE DATE _____ COUNTY SURVEYOR _____</p>
--	---	--

34-14-10

CRITCHLOW