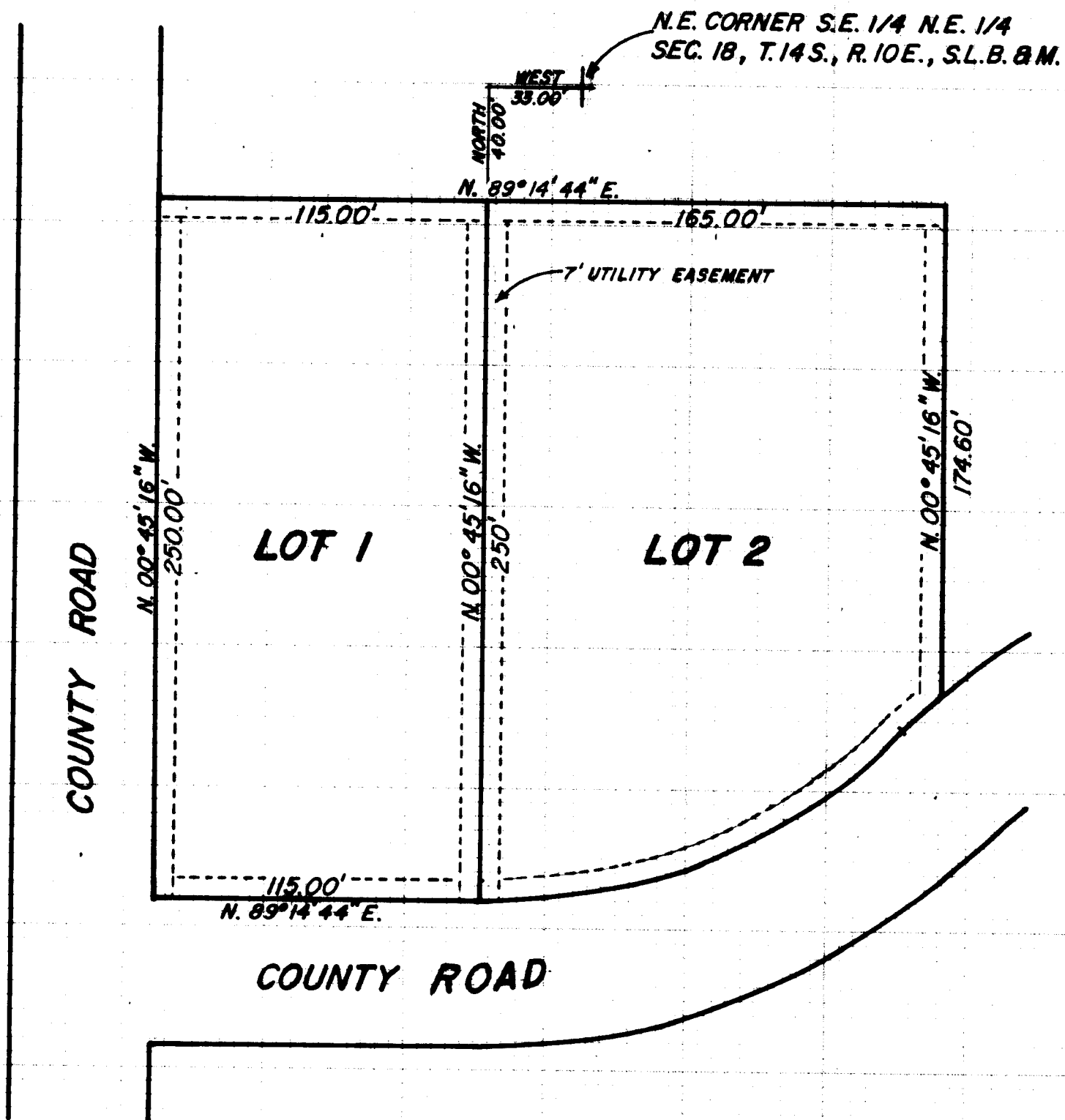


VICINITY MAP



FAUSETT MINOR SUBDIVISION

LOT DESCRIPTIONS

LOT NO. 1 -

BEGINNING AT A POINT 40.00 FT. SOUTH AND 33.00 FT. WEST FROM THE N.E. CORNER OF THE S.E. 1/4 OF THE N.E. 1/4, SECTION 18, T. 14 S., R. 10 E., S.L.B. & M. AND RUNNING THENCE S. 00° 45' 16" E., 250.00 FT.; THENCE S. 89° 14' 44" W., 115.00 FT.; THENCE N. 00° 45' 16" W., 250.00 FT.; THENCE N. 89° 14' 44" E., 115.00 FT. TO THE POINT OF BEGINNING.

LOT NO. 2 -

BEGINNING AT A POINT 40.00 FT. SOUTH AND 33.00 FT. WEST FROM THE N.E. CORNER OF THE S.E. 1/4 OF THE N.E. 1/4, SECTION 18, T. 14 S., R. 10 E., S.L.B. & M. AND RUNNING THENCE N. 89° 14' 44" E., 165.00 FT. TO A POINT WHICH IS ALSO THE N.W. CORNER OF LOT 1, GRANT FAUSETT SUBDIVISION; THENCE S. 00° 45' 16" E., 174.60 FT. TO THE NORTH LINE OF THE DEDICATED ROADWAY, WHICH POINT IS ON THE ARC OF A 213.38 FT. RADIUS CURVE TO THE LEFT; THENCE S.W.'LY ALONG THE ARC OF SAID CURVE 19.13 FT., THROUGH A CENTRAL ANGLE OF 05° 08' 08", THE CHORD OF WHICH BEARS S. 46° 48' 48" W., 19.12 FT.; THENCE S.W.'LY ALONG THE ARC OF A 213.38 FT. RADIUS CURVE TO THE RIGHT 167.59 FT., THROUGH A CENTRAL ANGLE OF 45° 00' 00", THE CHORD OF WHICH BEARS S. 66° 44' 44" W., 163.32 FT.; THENCE N. 00° 45' 16" E., 250.00 FT. TO THE POINT OF BEGINNING.

MINOR SUBDIVISION

COUNTY PLANNING & ZONING COMMISSION APPROVAL & ACCEPTANCE

PRESENTED TO THE CARBON COUNTY PLANNING & ZONING COMMISSION THIS 5th DAY OF August, 1983, AT WHICH TIME THIS PETITION FOR WAS APPROVED AS A MINOR SUBDIVISION.

David R. Manton
PLANNING & ZONING COMMISSION CHAIRMAN

EMPIRE ENGINE
NORTH 100 EAST PRICE, UTAH 84302

FAUSETT MINOR SUBDI

DRAWN BY: J.E.S.	APPROVED BY:	DRAWN:
DATE: 06/23/83	SCALE: 1" = 50'	

18-14-10

FAUSETT