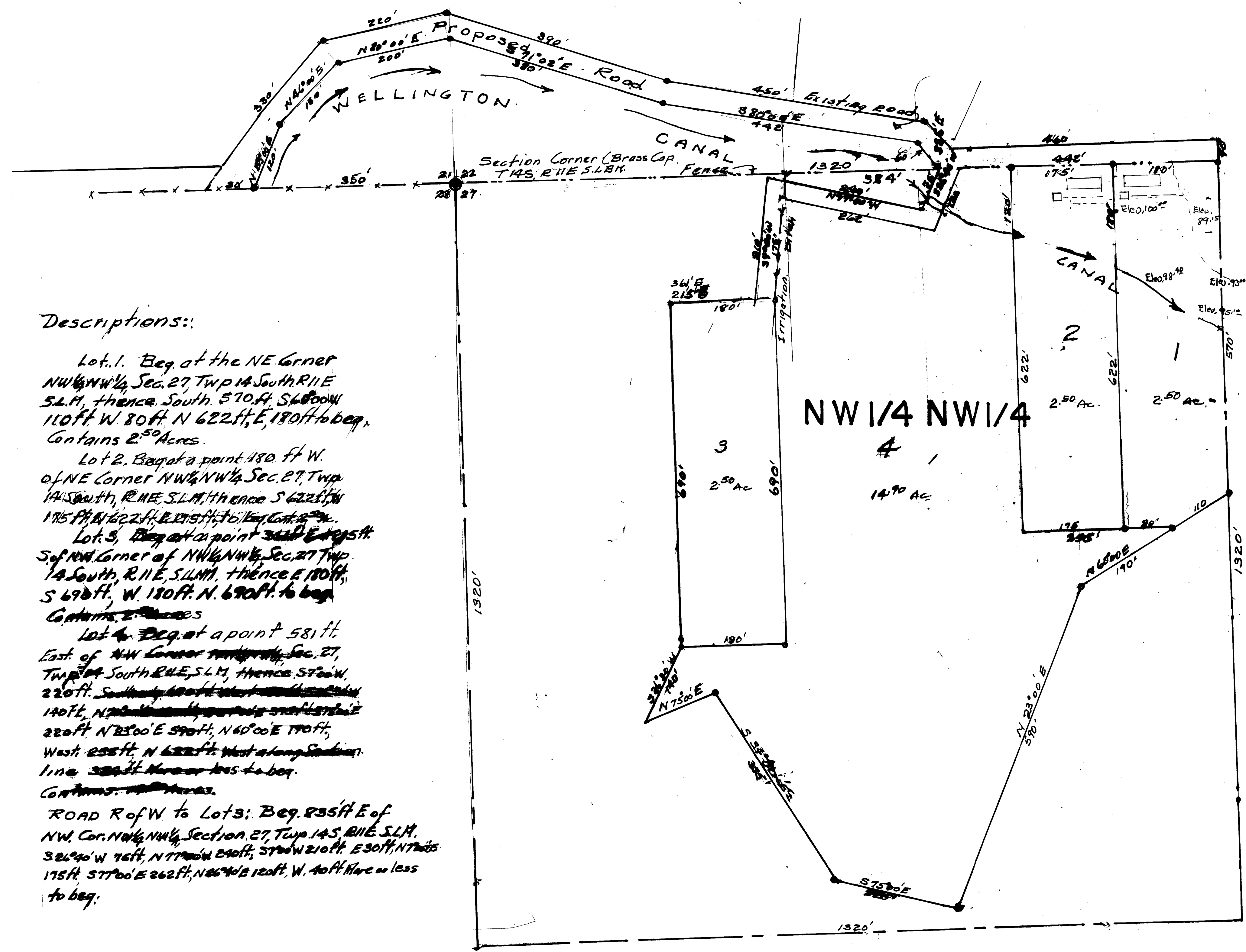


FOSTER'S MINOR PLAT

SECTION 27 TWP. 14 S, R. 11 E
S.L.B.M.

CARBON COUNTY

Scale 1" = 100'



Descriptions:

Lot 1. Beg. at the NE Corner NW 1/4 NW 1/4 Sec. 27 Twp. 14 S, R. 11 E S.L.M. thence South 570 ft. S 60° 00' W 110 ft. W 80 ft. N 62° 21' E, 180 ft. to beg. Contains 2.50 Acres.

Lot 2. Beg. at a point 180 ft. W. of NE Corner NW 1/4 NW 1/4 Sec. 27 Twp. 14 S, R. 11 E S.L.M. thence S 62° 21' W 175 ft. N 62° 21' E 175 ft. to beg. Contains 2.50 Acres.

Lot 3. Beg. at a point 320 ft. East of NW Corner of NW 1/4 NW 1/4 Sec. 27 Twp. 14 S, R. 11 E S.L.M. thence E 180 ft. S 69° 00' W 180 ft. N 180 ft. to beg. Contains 2.50 Acres.

Lot 4. Beg. at a point 581 ft. East of NW Corner NW 1/4 NW 1/4 Sec. 27 Twp. 14 S, R. 11 E S.L.M. thence S 70° 00' W 220 ft. South 180 ft. West 140 ft. N 75° 00' E 220 ft. N 23° 00' E 370 ft. N 60° 00' E 170 ft. West 250 ft. N 62° 21' E West along Section line 320 ft. more or less to beg. Contains 14.70 Acres.

ROAD R of W to Lot 3: Beg. 235 ft. E of NW Cor. NW 1/4 NW 1/4 Section 27 Twp. 14 S, R. 11 E S.L.M. S 26° 40' W 76 ft. N 77° 00' W 290 ft. S 70° 00' W 210 ft. E 30 ft. N 75° 00' E 175 ft. S 70° 00' E 262 ft. N 66° 40' E 120 ft. W. 40 ft. more or less to beg.

PLANNING COMMISSION
APPROVED THIS _____ DAY OF _____ AD 1983.
BY THE COUNTY PLANNING COMM.
Richard F. Foster
CHAIRMAN COUNTY PLANNING.

BOARD OF HEALTH
APPROVED THIS _____ DAY OF _____ AD 1983.
DIRECTOR COUNTY BOARD OF HEALTH

SURVEYORS CERTIFICATE
I, HEREBY CERTIFY THAT THIS OFFICE HAS THIS PLAT AND IT IS CORRECT IN ACCORD WITH THE INFORMATION ON FILE IN THIS OFFICE.
DATE _____ COUNTY SUR _____

27-14-11

FOSTER