

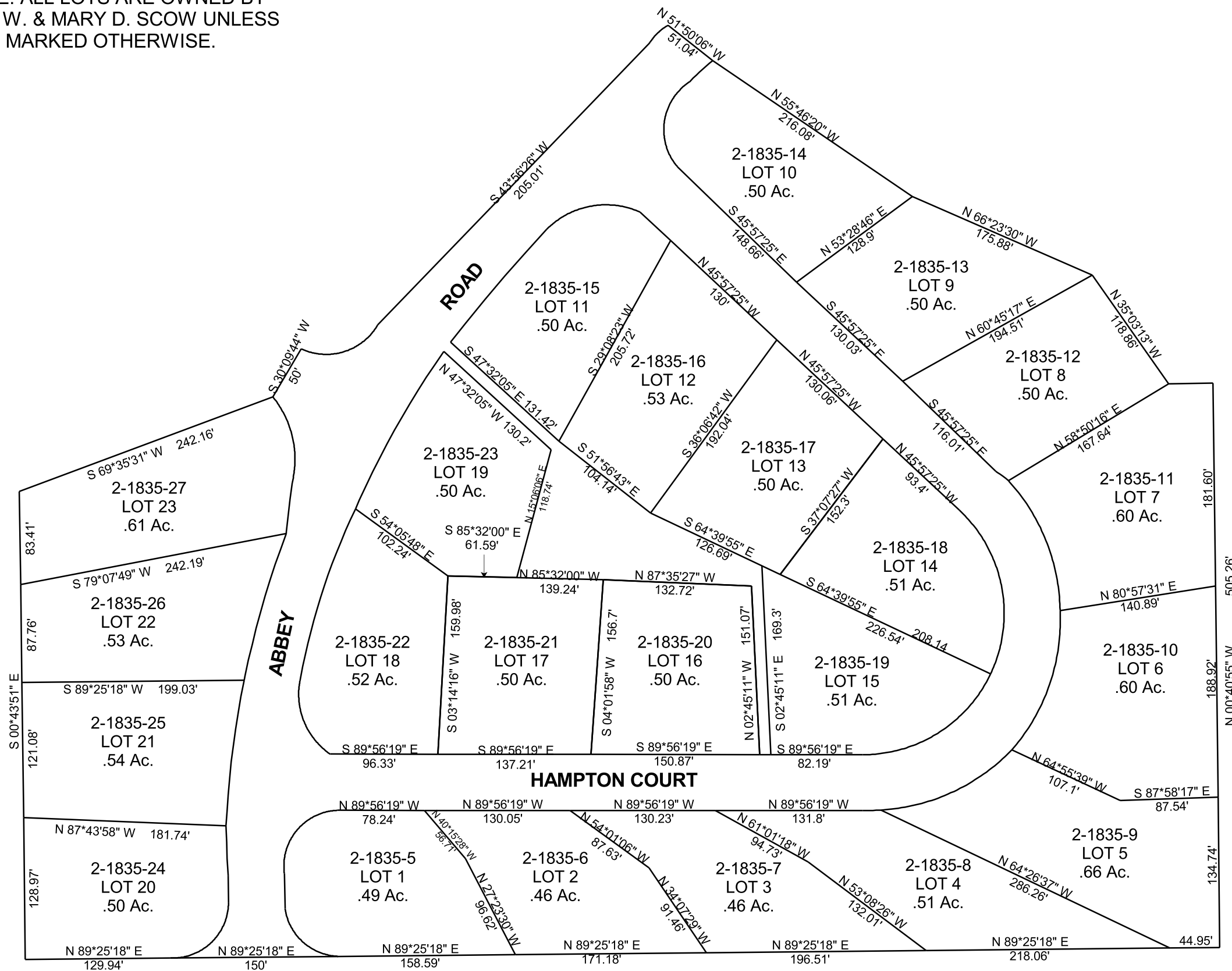
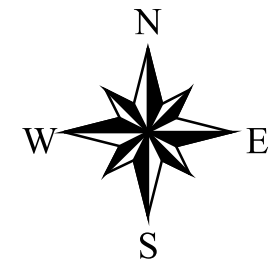
CARBON COUNTY PLATS

FRENCH QUARTERS AT WELLINGTON

PHASE 1

THIS PLAT HAS BEEN VACATED
PURSUANT TO UTAH CODE
JUNE 11, 2002 #92184

NOTE: ALL LOTS ARE OWNED BY
GARY W. & MARY D. SCOW UNLESS
MARKED OTHERWISE.



SCALE: 200 FEET = 1 INCH