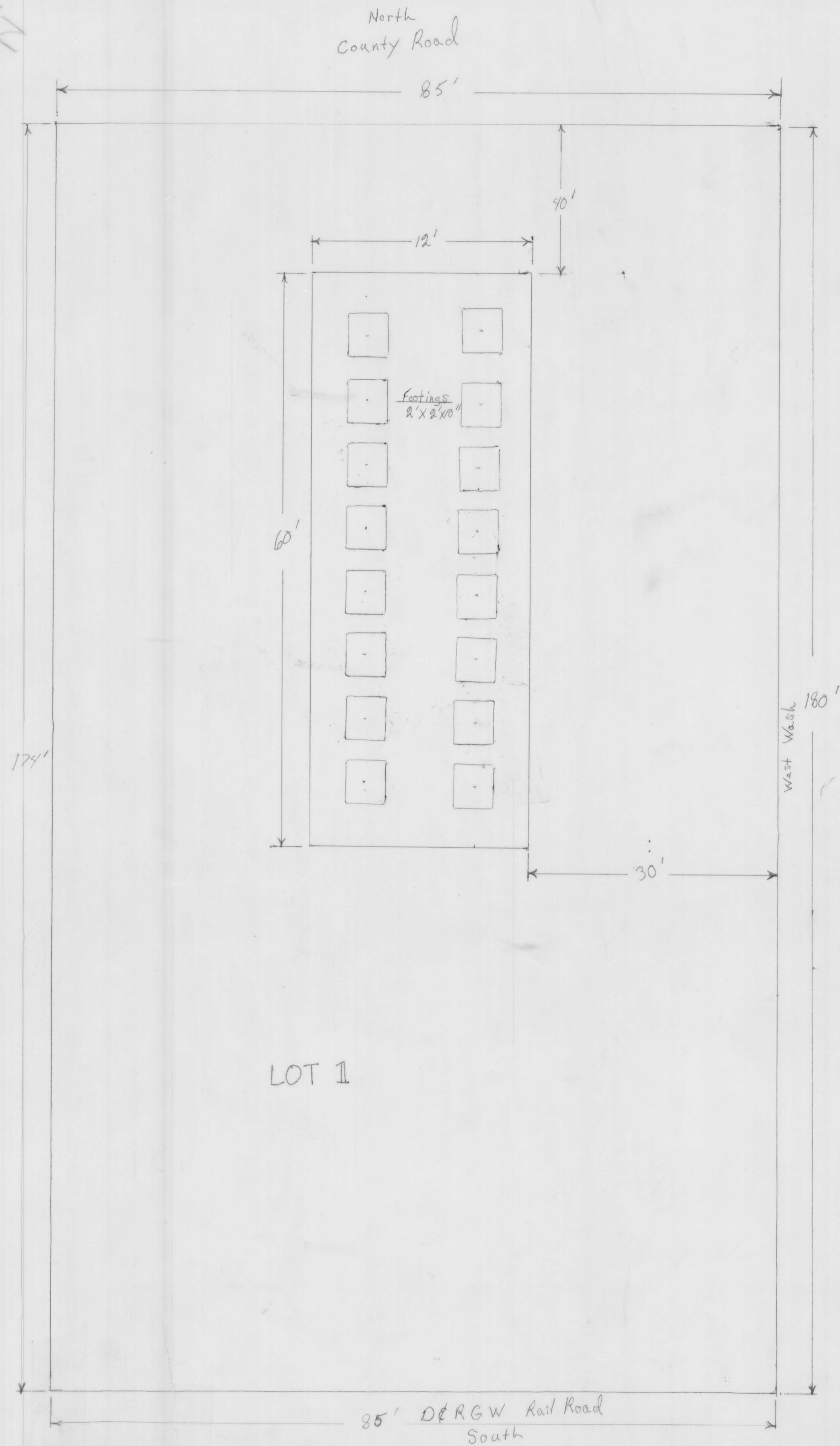


2



Beg. 1440 Ft. N. & 1041 Ft. W. of SE Cor. NE 1/4
 SEC. 7, T14S, R10E, S1M; +L. ALONG S. BDR.
 Line of CO. RD. N. 48°00' W. 85 Ft.; S. 28°00'
 W. 174 Ft. to D&RGW R/W; SE'LY. ALG. S.D. R/W
 85 Ft.; NE'LY. ALG. W. Bank of Wash 130 Ft.
 Lot No. 1

Presented to the Carbon County Planning & Zoning Commission
 this 13th day of May 1980 at which time
 this petition was approved & accepted AS A
 MINOR SUBDIVISION
David B. Marston Chairman

DATE	APPROVED BY

7-14-10

FERRON GARDNER
 ARCHITECTS