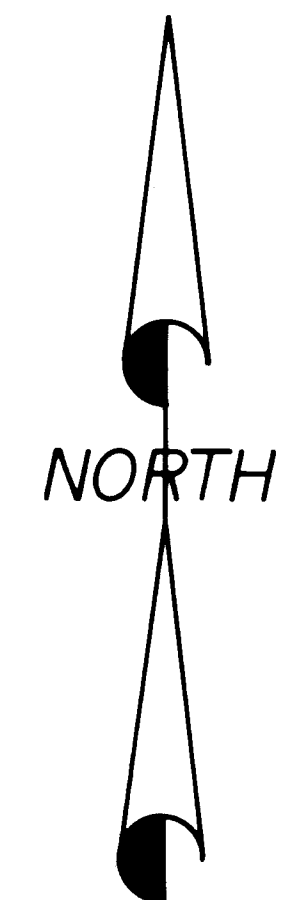
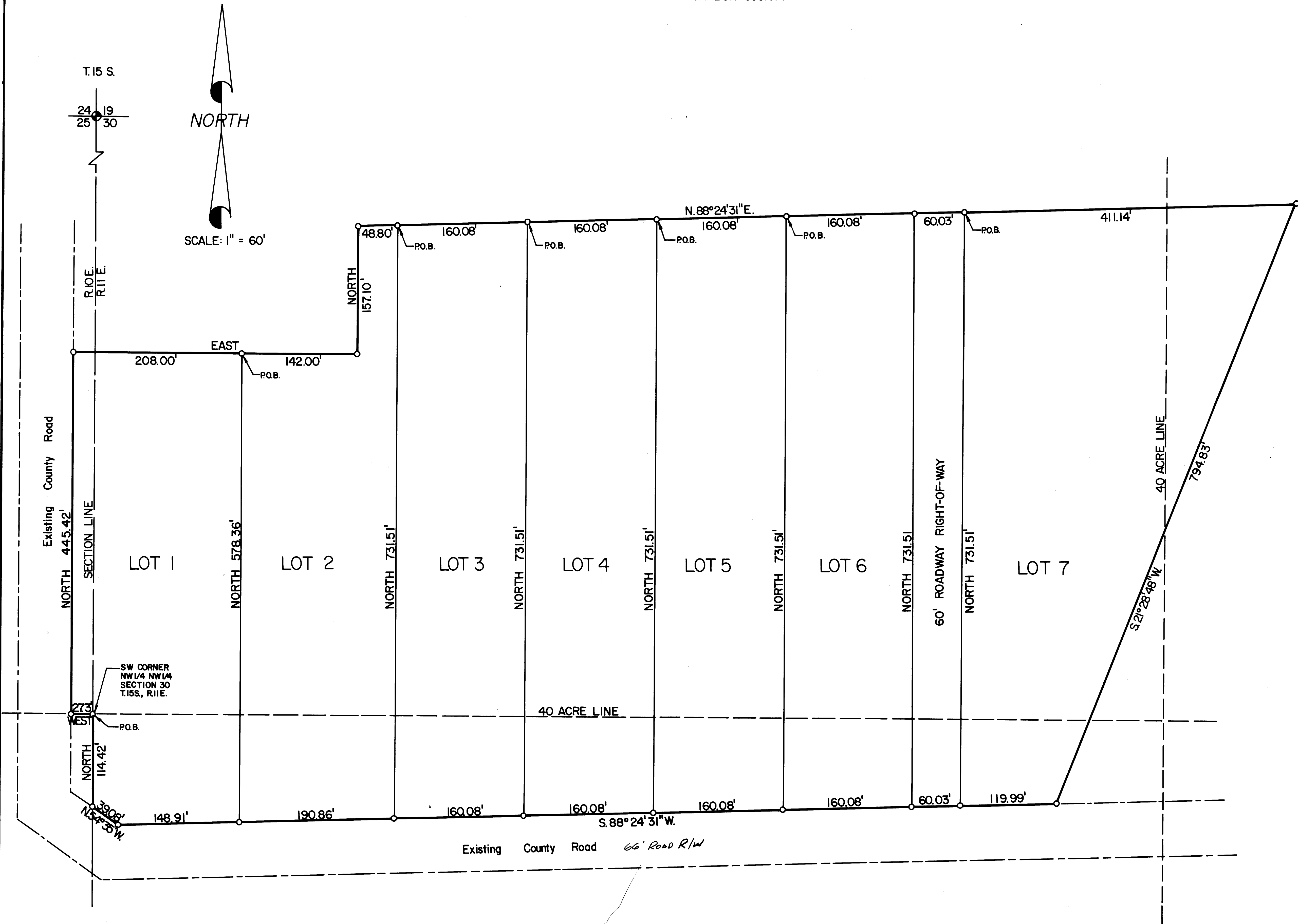


MINOR SUBDIVISION PLAT
FLOYD GOLDING
CARBON COUNTY



SCALE: 1" = 60'



LEGAL DESCRIPTIONS

LOT NO. 1

BEGINNING AT THE SOUTHWEST CORNER OF THE NW 1/4 NW 1/4 OF SECTION 30, T.15S, R.11E., S.L.B. & M., AND RUNNING THENCE WEST 27.3 FT.; THENCE NORTH 445.4 FT.; THENCE EAST 208.0 FT.; THENCE SOUTH 578.4 FT.; THENCE S. 88° 24' 31" W. 148.9 FT.; THENCE N. 54° 35' W. 39.1 FT.; THENCE NORTH 114.4 FT. TO THE POINT OF BEGINNING. CONTAINS 2.68 ACRES.

LOT NO. 2

BEGINNING AT A POINT WHICH LIES 445.42 FT. NORTH AND 180.70 FT. EAST FROM THE SOUTHWEST CORNER OF THE NW 1/4 NW 1/4 OF SECTION 30, T.15S, R.11E., S.L.B. & M., AND RUNNING THENCE EAST 142.0 FT.; THENCE NORTH 157.1 FT.; THENCE N. 88° 24' 31" E. 48.8 FT.; THENCE SOUTH 731.5 FT.; THENCE S. 88° 24' 31" W. 190.9 FT.; THENCE NORTH 578.4 FT. TO THE POINT OF BEGINNING. CONTAINS 2.70 ACRES.

LOT NO. 3

BEGINNING AT A POINT WHICH LIES 603.88 FT. NORTH AND 371.48 FT. EAST FROM THE SOUTHWEST CORNER OF THE NW 1/4 NW 1/4 OF SECTION 30, T.15S, R.11E., S.L.B. & M., AND RUNNING THENCE N. 88° 24' 31" E. 160.1 FT.; THENCE SOUTH 731.5 FT.; THENCE S. 88° 24' 31" W. 160.1 FT.; THENCE NORTH 731.5 FT. TO THE POINT OF BEGINNING. CONTAINS 2.69 ACRES.

LOT NO. 4

BEGINNING AT A POINT WHICH LIES 608.32 FT. NORTH AND 531.50 FT. EAST FROM THE SOUTHWEST CORNER OF THE NW 1/4 NW 1/4 OF SECTION 30, T.15S, R.11E., S.L.B. & M., AND RUNNING THENCE N. 88° 24' 31" E. 160.1 FT.; THENCE SOUTH 731.5 FT.; THENCE S. 88° 24' 31" W. 160.1 FT.; THENCE NORTH 731.5 FT. TO THE POINT OF BEGINNING. CONTAINS 2.69 ACRES.

LOT NO. 5

BEGINNING AT A POINT WHICH LIES 612.77 FT. NORTH AND 691.52 FT. EAST FROM THE SOUTHWEST CORNER OF THE NW 1/4 NW 1/4 OF SECTION 30, T.15S, R.11E., S.L.B. & M., AND RUNNING THENCE N. 88° 24' 31" E. 160.1 FT.; THENCE SOUTH 731.5 FT.; THENCE S. 88° 24' 31" W. 160.1 FT.; THENCE NORTH 731.5 FT. TO THE POINT OF BEGINNING. CONTAINS 2.69 ACRES.

LOT NO. 6

BEGINNING AT A POINT WHICH LIES 617.21 FT. NORTH AND 851.54 FT. EAST FROM THE SOUTHWEST CORNER OF THE NW 1/4 NW 1/4 OF SECTION 30, T.15S, R.11E., S.L.B. & M., AND RUNNING THENCE N. 88° 24' 31" E. 160.1 FT.; THENCE SOUTH 731.5 FT.; THENCE S. 88° 24' 31" W. 160.1 FT.; THENCE NORTH 731.5 FT. TO THE POINT OF BEGINNING. CONTAINS 2.69 ACRES.

LOT NO. 7

BEGINNING AT A POINT WHICH LIES 623.33 FT. NORTH AND 1071.56 FT. EAST FROM THE SOUTHWEST CORNER OF THE NW 1/4 NW 1/4 OF SECTION 30, T.15S, R.11E., S.L.B. & M., AND RUNNING THENCE N. 88° 24' 31" E. 411.14 FT.; THENCE S. 21° 28' 48" W. 794.8 FT.; THENCE S. 88° 24' 31" W. 120.0 FT.; THENCE NORTH 731.5 FT. TO THE POINT OF BEGINNING. CONTAINS 4.46 ACRES.

COUNTY APPROVALS

COUNTY SURVEYOR'S CERTIFICATE

I HEREBY CERTIFY THAT I HAVE HAD THIS PLAT CHECKED WITH INFORMATION ON FILE IN THIS OFFICE AND HAVE FOUND IT TO BE CORRECT.

[Signature] 1-7-82
CARBON COUNTY SURVEYOR DATE

CARBON COUNTY PLANNING & ZONING COMM.

APPROVED: *[Signature]*
COMMISSION CHAIRMAN