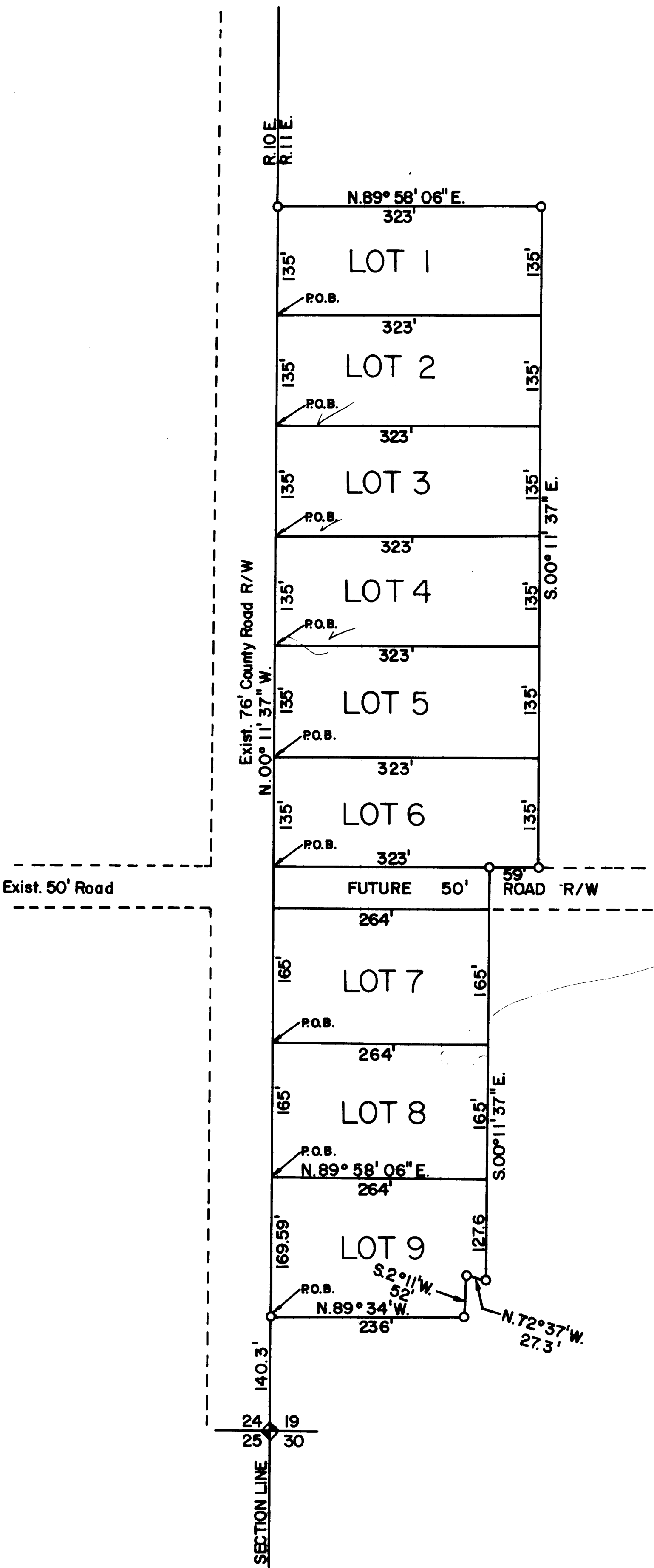


GOLDING MINOR SUBDIVISION

LOCATED IN CARBON COUNTY
SEC. 19, T.15 S., R.11 E., S.L.B. & M.



SCALE: 1" = 100'

LEGAL DESCRIPTIONS OF LOTS

- LOT NO. 1
BEGINNING AT A POINT WHICH LIES 1364.88 FT. NORTH AND 4.61 FT. WEST FROM THE S.W. CORNER OF SECTION 19, T.15 S., R.11 E., S.L.B. & M., AND RUNNING THENCE N.00°11'37" W. 135 FT.; THENCE N.89°58'06" E. 323 FT.; THENCE S.00°11'37" E. 135 FT.; THENCE S.89°58'06" W. 323 FT., TO THE POINT OF BEGINNING. CONTAINS 1.00 ACRES.
- LOT NO. 2
BEGINNING AT A POINT WHICH LIES 1229.88 FT. NORTH AND 4.15 FT. WEST FROM THE S.W. CORNER OF SECTION 19, T.15 S., R.11 E., S.L.B. & M., AND RUNNING THENCE N.00°11'37" W. 135 FT.; THENCE N.89°58'06" E. 323 FT.; THENCE S.00°11'37" E. 135 FT.; THENCE S.89°58'06" W. 323 FT., TO THE POINT OF BEGINNING. CONTAINS 1.00 ACRES.
- LOT NO. 3
BEGINNING AT A POINT WHICH LIES 1094.88 FT. NORTH AND 3.70 FT. WEST FROM THE S.W. CORNER OF SECTION 19, T.15 S., R.11 E., S.L.B. & M., AND RUNNING THENCE N.00°11'37" W. 135 FT.; THENCE N.89°58'06" E. 323 FT.; THENCE S.00°11'37" E. 135 FT.; THENCE S.89°58'06" W. 323 FT., TO THE POINT OF BEGINNING. CONTAINS 1.00 ACRES.
- LOT NO. 4
BEGINNING AT A POINT WHICH LIES 959.88 FT. NORTH AND 3.24 FT. WEST FROM THE S.W. CORNER OF SECTION 19, T.15 S., R.11 E., S.L.B. & M., AND RUNNING THENCE N.00°11'37" W. 135 FT.; THENCE N.89°58'06" E. 323 FT.; THENCE S.00°11'37" E. 135 FT.; THENCE S.89°58'06" W. 323 FT., TO THE POINT OF BEGINNING. CONTAINS 1.00 ACRES.
- LOT NO. 5
BEGINNING AT A POINT WHICH LIES 824.88 FT. NORTH AND 2.78 FT. WEST FROM THE S.W. CORNER OF SECTION 19, T.15 S., R.11 E., S.L.B. & M., AND RUNNING THENCE N.00°11'37" W. 135 FT.; THENCE N.89°58'06" E. 323 FT.; THENCE S.00°11'37" E. 135 FT.; THENCE S.89°58'06" W. 323 FT., TO THE POINT OF BEGINNING. CONTAINS 1.00 ACRES.
- LOT NO. 6
BEGINNING AT A POINT WHICH LIES 689.89 FT. NORTH AND 2.33 FT. WEST FROM THE S.W. CORNER OF SECTION 19, T.15 S., R.11 E., S.L.B. & M., AND RUNNING THENCE N.00°11'37" W. 135 FT.; THENCE N.89°58'06" E. 323 FT.; THENCE S.00°11'37" E. 135 FT.; THENCE S.89°58'06" W. 323 FT., TO THE POINT OF BEGINNING. CONTAINS 1.00 ACRES.
- LOT NO. 7
BEGINNING AT A POINT WHICH LIES 474.89 FT. NORTH AND 1.60 FT. WEST FROM THE S.W. CORNER OF SECTION 19, T.15 S., R.11 E., S.L.B. & M., AND RUNNING THENCE N.00°11'37" W. 165 FT.; THENCE N.89°58'06" E. 264 FT.; THENCE S.00°11'37" E. 165 FT.; THENCE S.89°58'06" W. 264 FT., TO THE POINT OF BEGINNING. CONTAINS 1.00 ACRES.
- LOT NO. 8
BEGINNING AT A POINT WHICH LIES 309.89 FT. NORTH AND 1.05 FT. WEST FROM THE S.W. CORNER OF SECTION 19, T.15 S., R.11 E., S.L.B. & M., AND RUNNING THENCE N.00°11'37" W. 165 FT.; THENCE N.89°58'06" E. 264 FT.; THENCE S.00°11'37" E. 165 FT.; THENCE S.89°58'06" W. 264 FT., TO THE POINT OF BEGINNING. CONTAINS 1.00 ACRES.
- LOT NO. 9
BEGINNING AT A POINT WHICH LIES 140.30 FT. NORTH AND 0.47 FT. WEST FROM THE S.W. CORNER OF SECTION 19, T.15 S., R.11 E., S.L.B. & M., AND RUNNING THENCE N.00°11'37" W. 169.59 FT.; THENCE N.89°58'06" E. 264 FT.; THENCE S.00°11'37" E. 127.6 FT.; THENCE N.72°37' W. 27.3 FT.; THENCE S.02°11' W. 52 FT.; THENCE N.89°34' W. 236 FT. MORE OR LESS TO THE POINT OF BEGINNING. CONTAINS 1.00 ACRES.

COUNTY APPROVALS

COUNTY SURVEYOR'S CERTIFICATE

I HEREBY CERTIFY THAT I HAVE HAD THIS PLAT EXAMINED BY THIS OFFICE AND THAT IT IS CORRECT AND IN ACCORDANCE WITH INFORMATION ON FILE.

11/14/83
DATE

Art F. Baker
CARBON COUNTY SURVEYOR

COUNTY PLANNING & ZONING COMMISSION

PRESENTED TO THE CARBON COUNTY PLANNING & ZONING COMMISSION THIS 11 DAY OF Nov., 1983, AT WHICH TIME THIS MINOR SUBDIVISION WAS APPROVED AND ACCEPTED.

Donald R. Munster
PLANNING & ZONING COMMISSION CHAIRMAN

ATTEST: _____
CARBON COUNTY CLERK