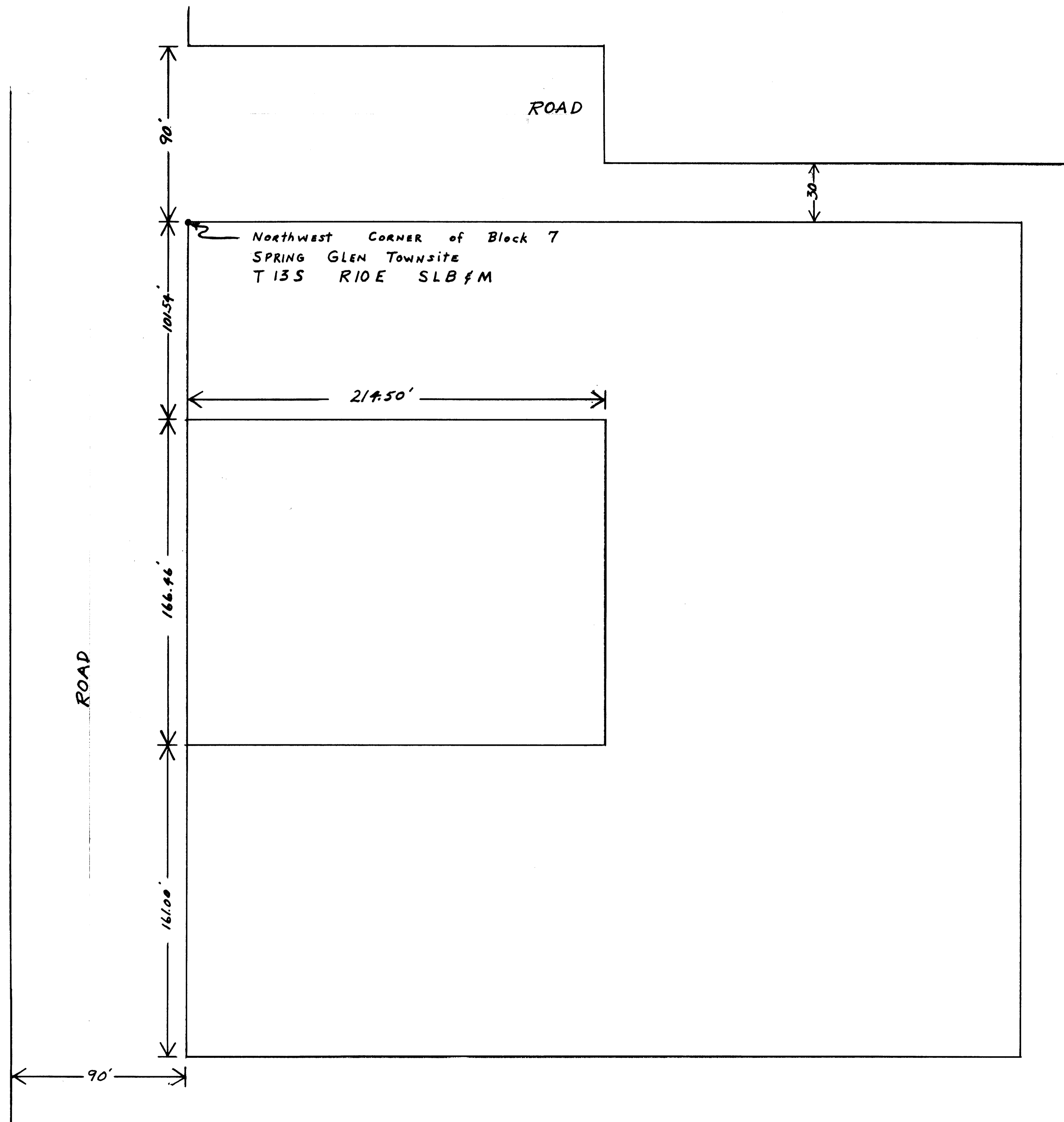


BEGINNING 101.54 FEET South of the
 NORTHWEST CORNER of Block 7,
 SPRING GLEN TOWNSHIP, T13S, R10E,
 SLB & M, thence South 166.46 FEET,
 thence East 214.50 FEET, thence
 North 166.46 FEET, thence West
 214.50 FEET to the BEGINNING



Planning Commission Approval
 5-13-80 *David G. Manton*
 Chairman

DATE		APPROVED BY		DR.
5-13-80		<i>David G. Manton</i>		DR.

SPRING GLEN
 BLK. 7

HATZARDAKIS