

MINOR SUBDIVISION PLAT

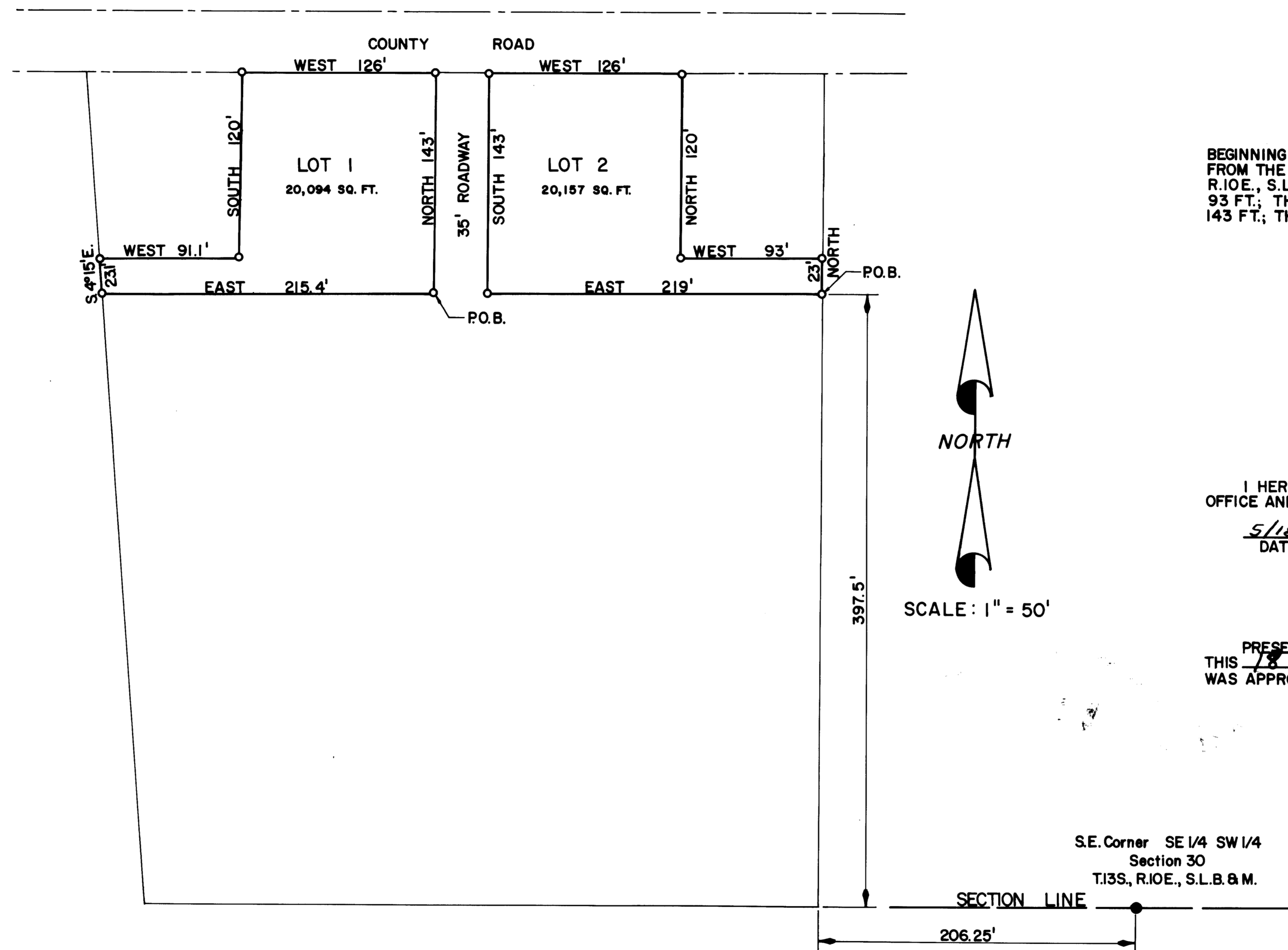
LEGAL DESCRIPTION OF LOTS

LOT NO. 1

BEGINNING AT A POINT WHICH LIES 460.25 FT. WEST AND 397.5 FT. NORTH FROM THE SOUTHEAST CORNER OF THE SE 1/4 SW 1/4 OF SECTION 30, T.13 S., R.10E., S.L.B. & M., AND RUNNING THENCE NORTH 143 FT.; THENCE WEST 126 FT.; THENCE SOUTH 120 FT.; THENCE WEST 91.1 FT.; THENCE EAST 215.4 FT. TO THE POINT OF BEGINNING.

LOT NO. 2

BEGINNING AT A POINT WHICH LIES 206.25 FT. WEST AND 397.5 FT. NORTH FROM THE SOUTHEAST CORNER OF THE SE 1/4 SW 1/4 OF SECTION 30, T.13 S., R.10E., S.L.B. & M., AND RUNNING THENCE NORTH 23 FT.; THENCE WEST 93 FT.; THENCE NORTH 120 FT.; THENCE WEST 126 FT.; THENCE SOUTH 143 FT.; THENCE EAST 219 FT.; TO THE POINT OF BEGINNING.



COUNTY APPROVALS

COUNTY SURVEYOR'S CERTIFICATE

I HEREBY CERTIFY THAT I HAVE HAD THIS PLAT EXAMINED BY THIS OFFICE AND THAT IT IS CORRECT AND IN ACCORDANCE WITH INFORMATION ON FILE.

5/18/82
DATE

Art Baker
CARBON COUNTY SURVEYOR

COUNTY PLANNING AND ZONING COMMISSION

PRESENTED TO THE CARBON COUNTY PLANNING & ZONING COMMISSION THIS 18 DAY OF May, 1982, AT WHICH TIME THIS MINOR SUBDIVISION WAS APPROVED AND ACCEPTED.

Harold R. Marston
PLANNING AND ZONING COMMISSION CHAIRMAN

30-13-10
EPH HENRIE