

SURVEYORS CERTIFICATE

STATE OF UTAH }  
County of Carbon } ss.

I, CARL NYMAN, County Surveyor, of Carbon County, Utah, do hereby certify that, on March 24th 1925, by authority of the owners, I surveyed, sub-divided and platted into lots and streets the tract of land described as follows:- Beginning at the North-east corner of the SW 1/4 of the SE 1/4 of Section 13, Township 13 South, Range 9 East, S.L.M.; thence South 0°47' East 169.26 feet; thence South 89°46' West 121.4 feet; thence South 71°59' West 215.78; thence on a curve to the right having a radius of 175 feet a distance of 150.00 feet; thence North 50°05' West 43.23 feet; thence North 31°05' East 83.15 feet; thence North 18°01' West 147.4 feet; thence South 89°46' West 32.6 feet; thence North 63°01' East 200 feet; thence South 82°30' East 365 feet; thence South 40 feet to the point of beginning; that this map is a full, true and correct map of the tract of land above described with the dimensions and field notes correctly shown thereon; that the azimuth has been correctly determined by solar and polaris observations; that bolts have been correctly placed as shown and that this plat comprises what is to be known as the Highway Plat, located within the corporate limits of Helper, Utah.

*Carl Nyman*  
County Surveyor

Subscribed and sworn to before me this 26th day of March, 1925

*H. E. Smith*  
County Clerk  
Carbon County, Utah

STATE OF UTAH }  
County of Carbon } ss.

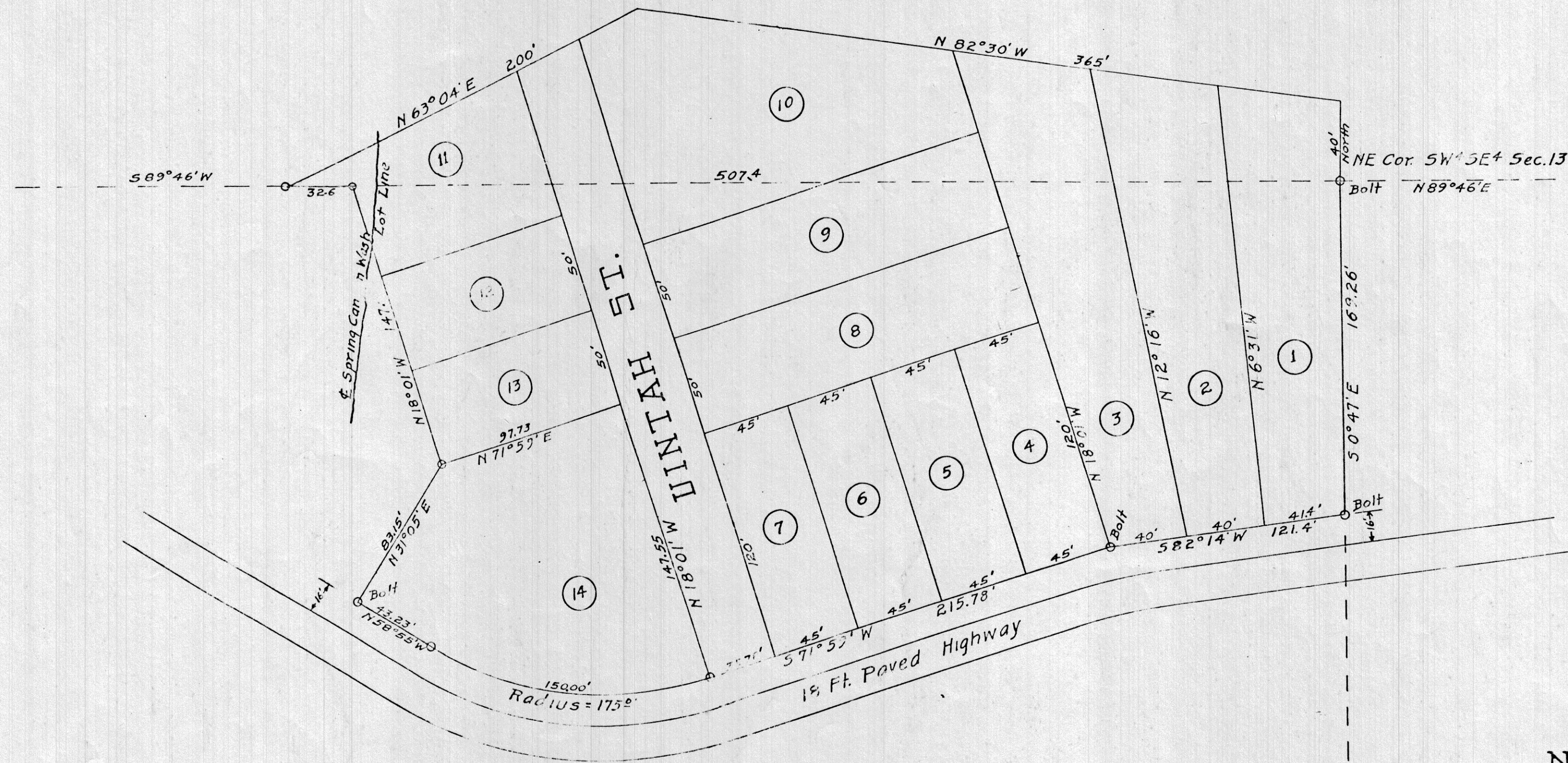
We, D. A. Finch and R. P. Fall, president and secretary, respectively, of the Service Garage, a corporation of Helper, Utah, do hereby certify that the Service Garage is the owner of the above described land and that by authority of its board of directors this plat was made, named and designated and a perpetual right of way over the streets, shown thereon by this plat, dedicated to the public.

*D. A. Finch*  
President  
*R. P. Fall*  
Secretary

Subscribed and sworn to before me this 26th day of March, 1925.

*J. B. ...*  
Notary Public  
Residence

My commission expires-  
Feb. 6<sup>th</sup> 1928.



# HIGHWAY PLAT of HELPER

Scale: 40 Ft. = 1 In.

Entry # 8387

2. P.

PLAT-A 63  
*Jessie F. Sunborg*

Paig # 3.25

Approved by the CITY COUNCIL of Helper, Utah, in regular session this 26<sup>th</sup> day of March, A.D., 1925.

*Allen Bullinger*  
Mayor

Attest: *J. B. ...*  
City Recorder

HIGHWAY  
PLAT OF HELPER